



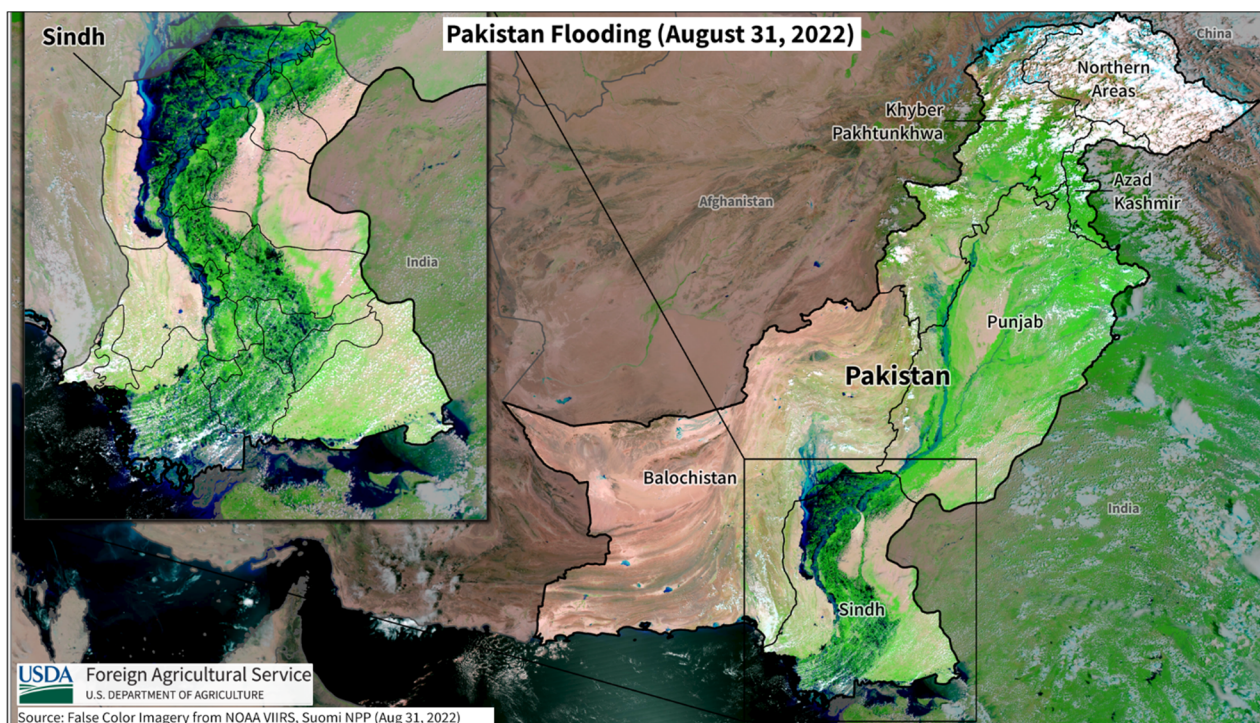
United States
Department of
Agriculture

Foreign
Agricultural
Service

Circular Series
WAP 9-22
September 2022

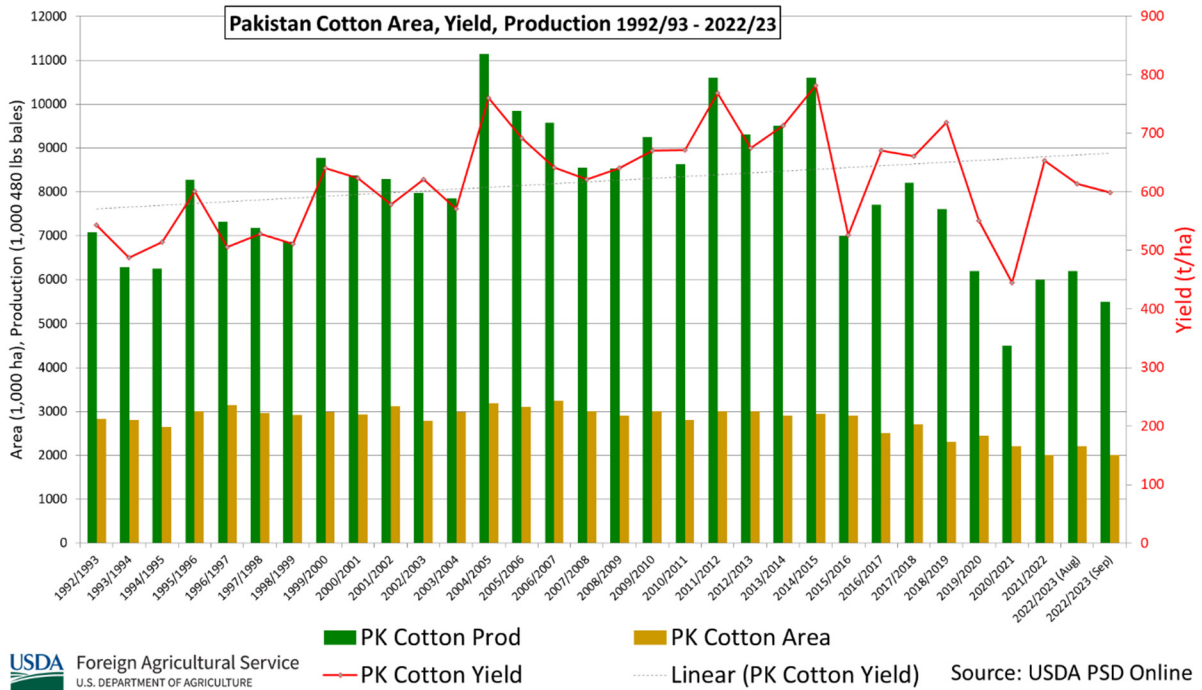
World Agricultural Production

Pakistan Cotton: Flooding Lowers Production



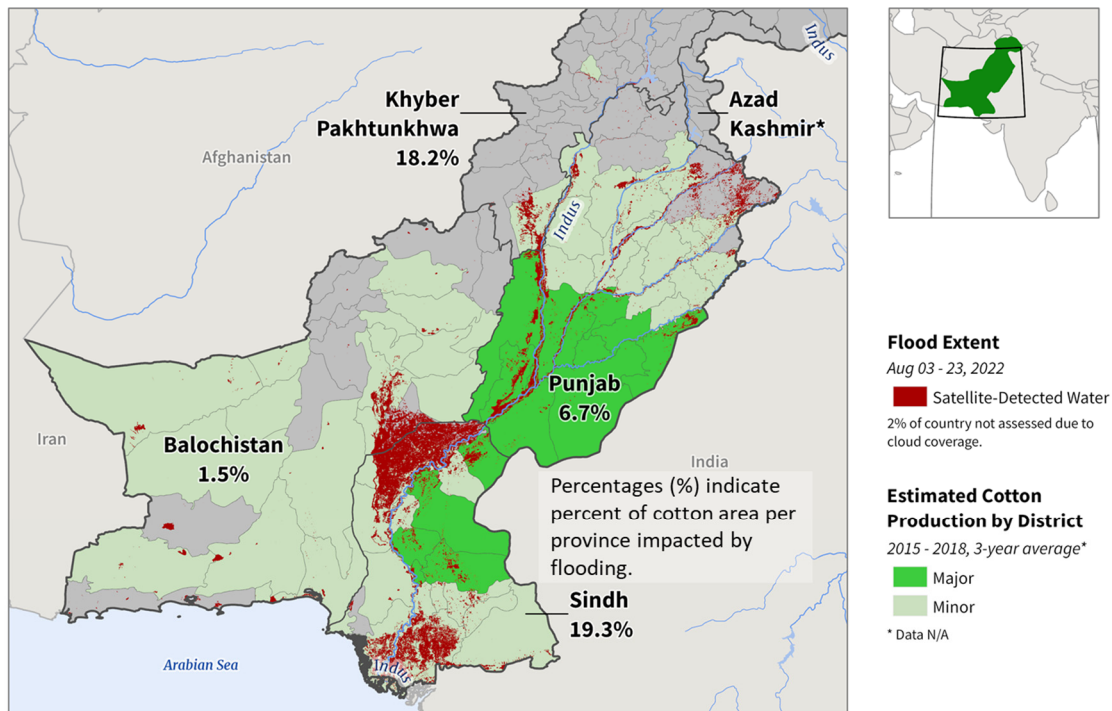
USDA estimates marketing year (MY) 2022/23 Pakistan cotton production at 5.5 million 480-pound bales, down 0.7 million bales (11 percent) from last month, and down 0.5 million bales (8 percent) from last year. Area is estimated at 2.0 million hectares, down 0.2 million (9 percent) from last month and unchanged from last year. The yield is forecast at 599 kilograms per hectare. This is 1 percent below the five-year average of 606 kilograms per hectare.

Approved by the World Agricultural Outlook Board



Production is revised down based on estimated lower area due to severe flooding in important production areas of Sindh and scattered areas along the Indus River in Punjab. Due to the flooding, MY 2022/23 projected harvested area is reduced 9 percent to 2.0 million hectares.

Pakistan Cotton-Producing Areas: August Flood Extent

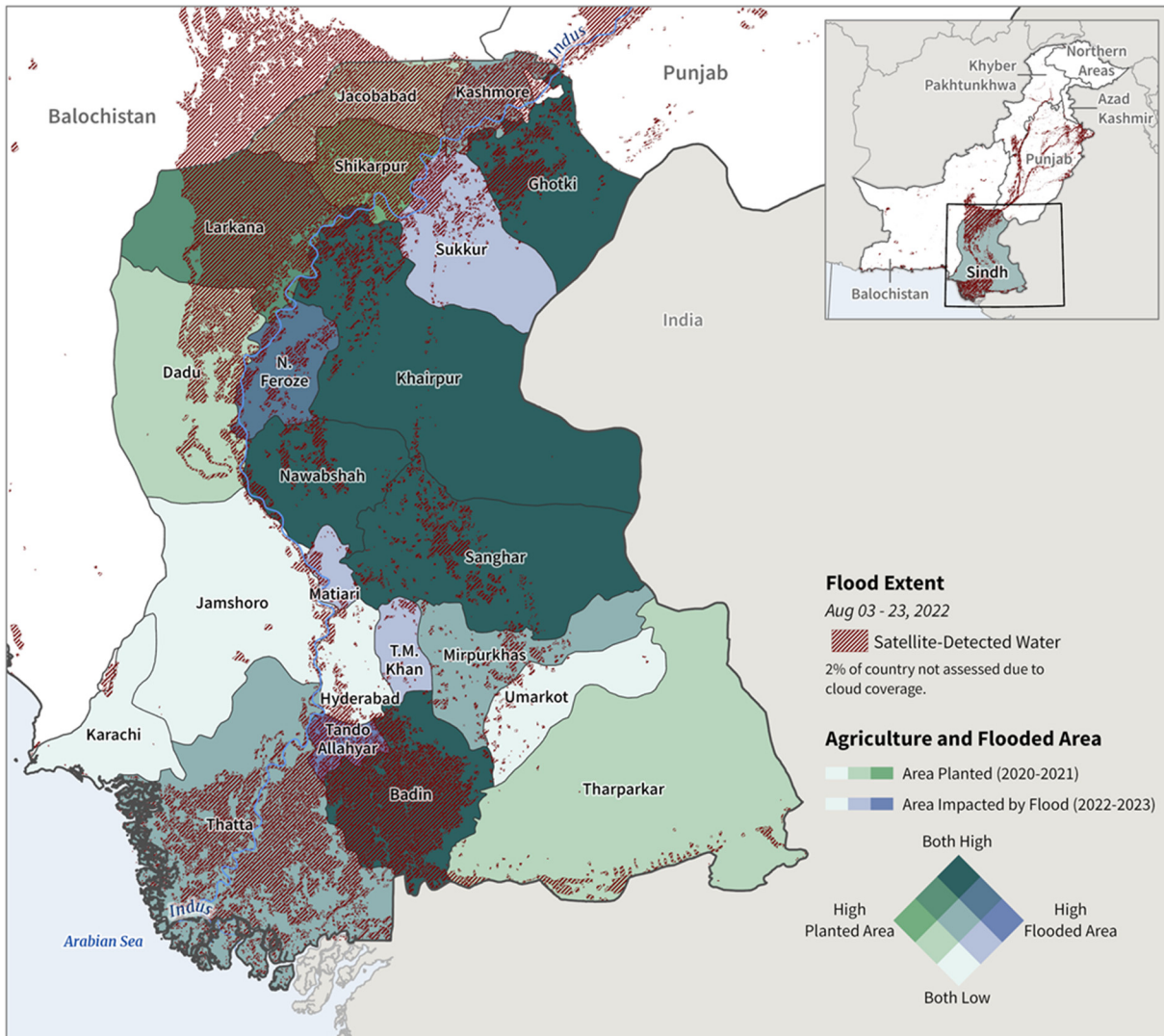


USDA Foreign Agricultural Service
U.S. DEPARTMENT OF AGRICULTURE

Sources: United Nations Satellite Center (UNOSTAT), VIIRS Flood Extent (Aug 03 - 23, 2022); 2018 Agricultural Marketing Information Service, Pakistan; Khyber Pakhtunkhwa (K.P.) Bureau of Statistics

According to FAS/Islamabad, cotton producing districts in the province of Sindh most affected are Sukkur, Khairpur, Naushahro Feroze, and Ghotki, and have large crop areas inundated with flood waters. If the flood waters recede quickly, some production in these areas may recover, but substantial loss has already occurred.

Sindh, Pakistan: Flood Extent and Agriculture



USDA Foreign Agricultural Service
 U.S. DEPARTMENT OF AGRICULTURE

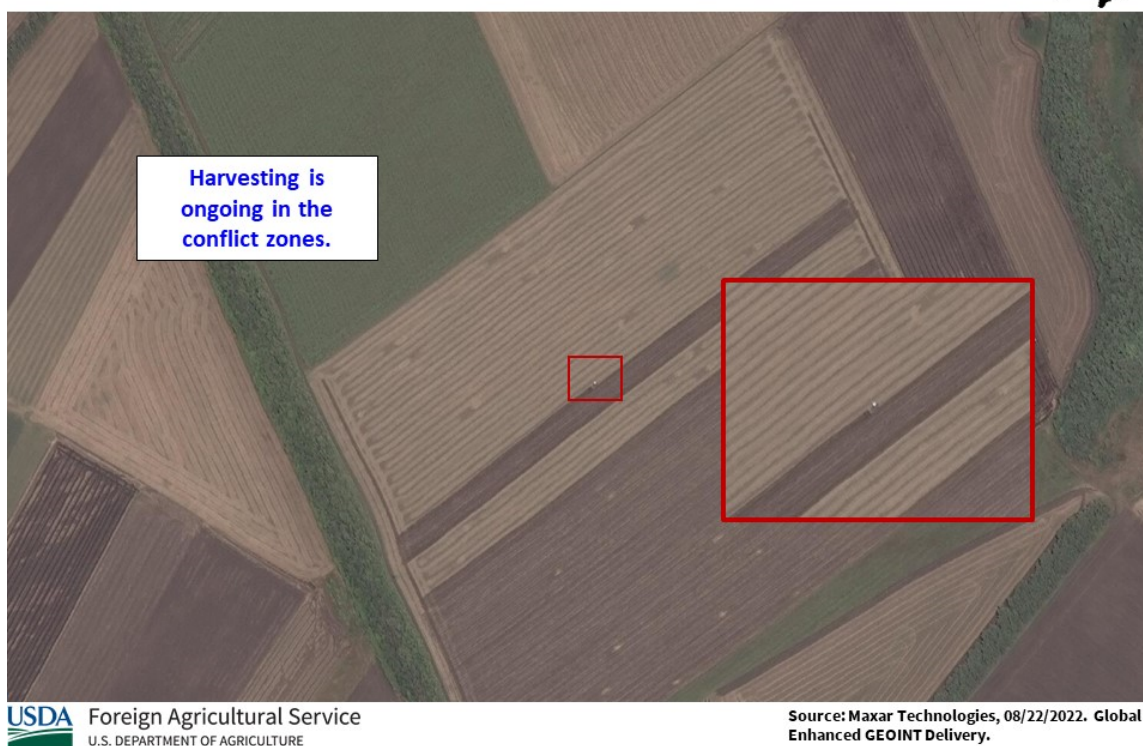
Sources: United Nations Satellite Center (UNOSTAT), VIIRS Flood Extent (Aug 03 - 23, 2022); Sindh Agricultural Department; Sindh Disaster Management Authority (Aug 30, 2022)

Cotton is grown under irrigated conditions with the Tarbela Reservoir providing most of the irrigation water. Approximately 66 percent of Pakistan’s total cotton crop is produced in Punjab province and the remaining 33 percent is in Sindh province. *(For more information, please contact James.Crutchfield@usda.gov.)*

Ukraine Wheat: Production Higher Based on Harvest Results

Ukraine wheat production for marketing year 2022/23 is estimated at 20.5 million metric tons, up 5 percent from last month, but down 38 percent from last year. USDA crop production estimates for Ukraine include estimated output from Crimea and Ukrainian oblasts currently under Russian control due to the war. Yield is estimated at 3.90 tons per hectare, up 5 percent from last month, but down 12 percent from last year's record. Harvested area is estimated at 5.25 million hectares (mha), unchanged from last month, but down 29 percent from last year.

Harvesting in Donetsk Oblast

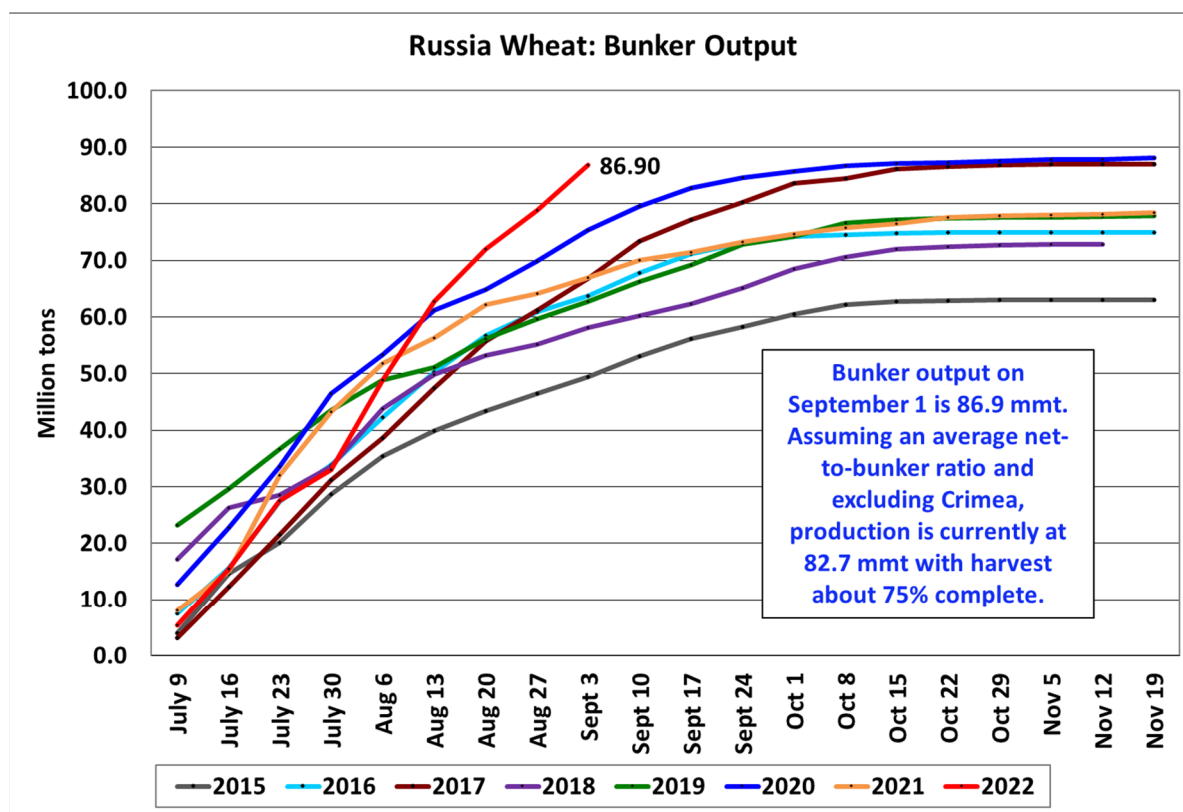


In Ukraine, 97 percent of total wheat production is winter wheat and harvest is essentially complete. Based on operational data from the Ukraine Ministry of Agriculture, as of the end of August, 4.62 mha has been harvested. This data, however, does not include reporting on the oblasts of Crimea, Donetsk, Luhansk, Zaporizka and Kherson. USDA, however, does include these areas. Crimean wheat area is, on average, about 0.3 mha. The other oblasts are currently under active conflict so reporting has ceased, but by using high resolution commercial satellite imagery, harvesting can be seen occurring in these oblasts. The oblasts under conflict have lower area, year-to-year, due to mines in fields, bomb craters, and debris left in fields. Wheat area may be abandoned due to lack of fuel or manpower.

Yield is increased month-to-month based on Ministry of Agriculture harvest results. At the end of August, bunker yield is reported at 4.08 t/ha. Since USDA publishes in net weight, an average net-to-bunker conversion is assumed. *(For more information, please contact Katie.McGaughey@usda.gov.)*

Russia Wheat: Record Yield

Russia wheat production for marketing year 2022/23 is estimated at 91.0 million metric tons (mmt), up 3 percent from last month and up 21 percent from last year. The estimate includes 68.0 mmt of winter wheat and 23.0 mmt of spring wheat. USDA crop production estimates for Russia exclude estimated output from Crimea which is included in Ukraine. Total wheat yield is estimated at a record 3.17 tons per hectare, up 3 percent from last month, and up 17 percent from last year. Total harvested area is estimated at 28.7 million hectares, unchanged from last month but up 4 percent from last year.



USDA Foreign Agricultural Service
U.S. DEPARTMENT OF AGRICULTURE

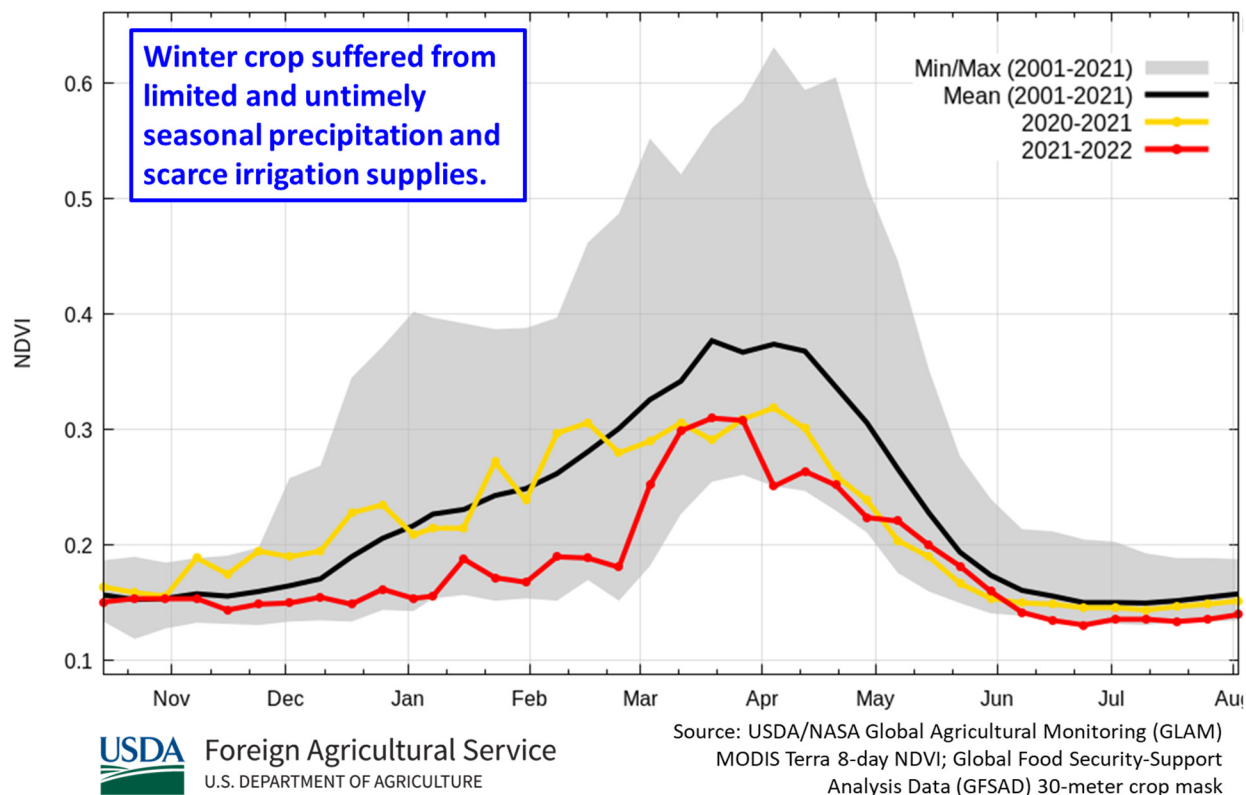
Source: Russia Ministry of Agriculture

Russia reports wheat harvest on a bunker weight basis, and USDA publishes on a net weight basis. Winter wheat harvest is essentially complete and spring wheat harvest has begun. Total Russia wheat yield typically starts high and decreases as harvest moves from the higher yielding southern oblasts in European Russia (Southern and North Caucasus Districts) to the lower yielding northern oblasts (Central and Volga Districts) in European Russia. This year, however, total yield harvest remains high, due to early-season favorable conditions in the Central and Volga Districts. Area, yield, and production estimates for Russia winter wheat and spring wheat are available on PSD Online. Select “Downloadable Data Sets” and open the zipped file for “Russia Wheat; Winter/Spring Area & Production.” (For more information, please contact Katie.McGaughey@usda.gov.)

Syria Wheat: Scarce Water Availability Hampers Production

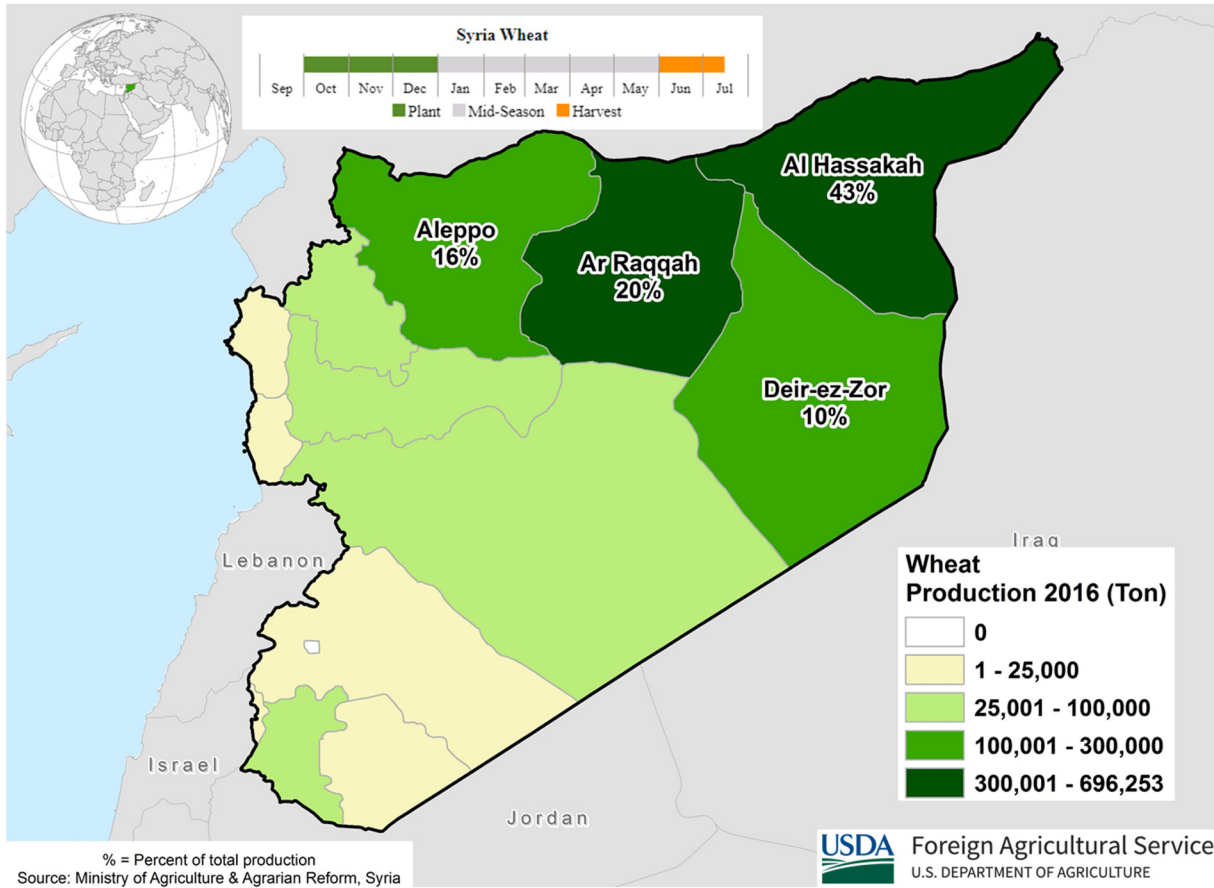
USDA estimated Syria wheat production for marketing year (MY) 2022/23 at 2.1 million metric tons, down 16 percent from last month. Harvested area is estimated at 1.2 million hectares, down 8 percent from last month. Yield is estimated at 1.75 metric tons per hectare, down 9 percent from last month.

Below average NDVI across Aleppo and Ar Raqqa, Syria



The key wheat producing area is northern Syria. This includes the governorates of Al Hasakah, Ar Raqqa and Aleppo. Wheat is typically planted in the fall between October and December; harvest starts in June and lasts until late July.

Syria: Wheat Production

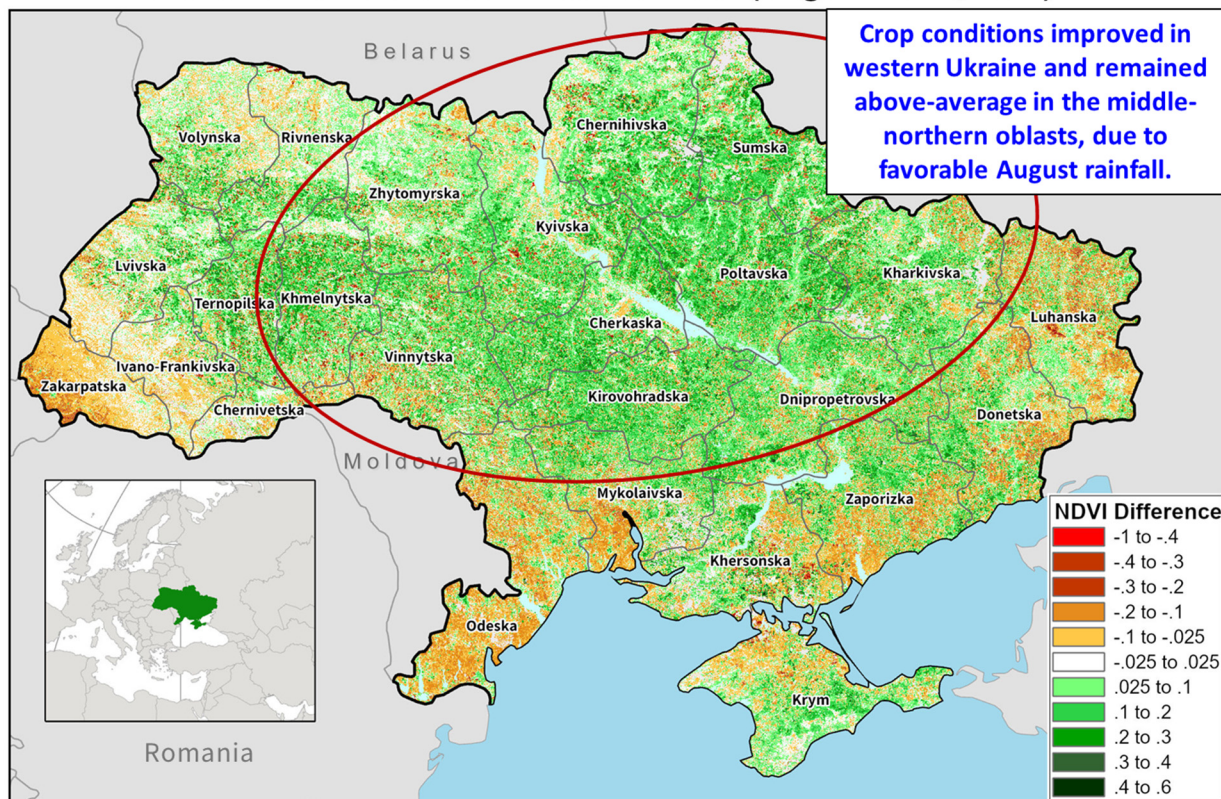


Limited and untimely seasonal precipitation, conflicts, and high input costs are some of the major factors contributing towards the lower-than-initially expected production. Crops were planted under sub-optimal soil moisture conditions in the fall and failed to receive adequate water supplies during the key yield formation stages. Wheat in Al Hasakah, the lead producing governorate, is almost entirely rain-fed, while it is partially irrigated in Ar Raqqa and Aleppo. Water flow in the Euphrates River, which is the major irrigation source for the latter two governorates, has been substantially limited since early 2021 due to the drought that hit the Middle East region during MY 2021/22. (For more information, please contact Iliana.Mladenova@usda.gov.)

Ukraine Corn: Favorable August Weather Boosts Yield in the West

Ukraine corn production for marketing year 2022/23 is estimated at 31.5 million metric tons, up 5 percent from last month but down 25 percent from last year. Yield is estimated at 7.00 tons per hectare, up 5 percent from last month, but down 9 percent from last year. Harvested area is estimated at 4.5 million hectares, unchanged from last month, but down 18 percent from last year.

UKRAINE: NDVI Difference from Normal (August 13-20, 2022)



USDA Foreign Agricultural Service
U.S. DEPARTMENT OF AGRICULTURE

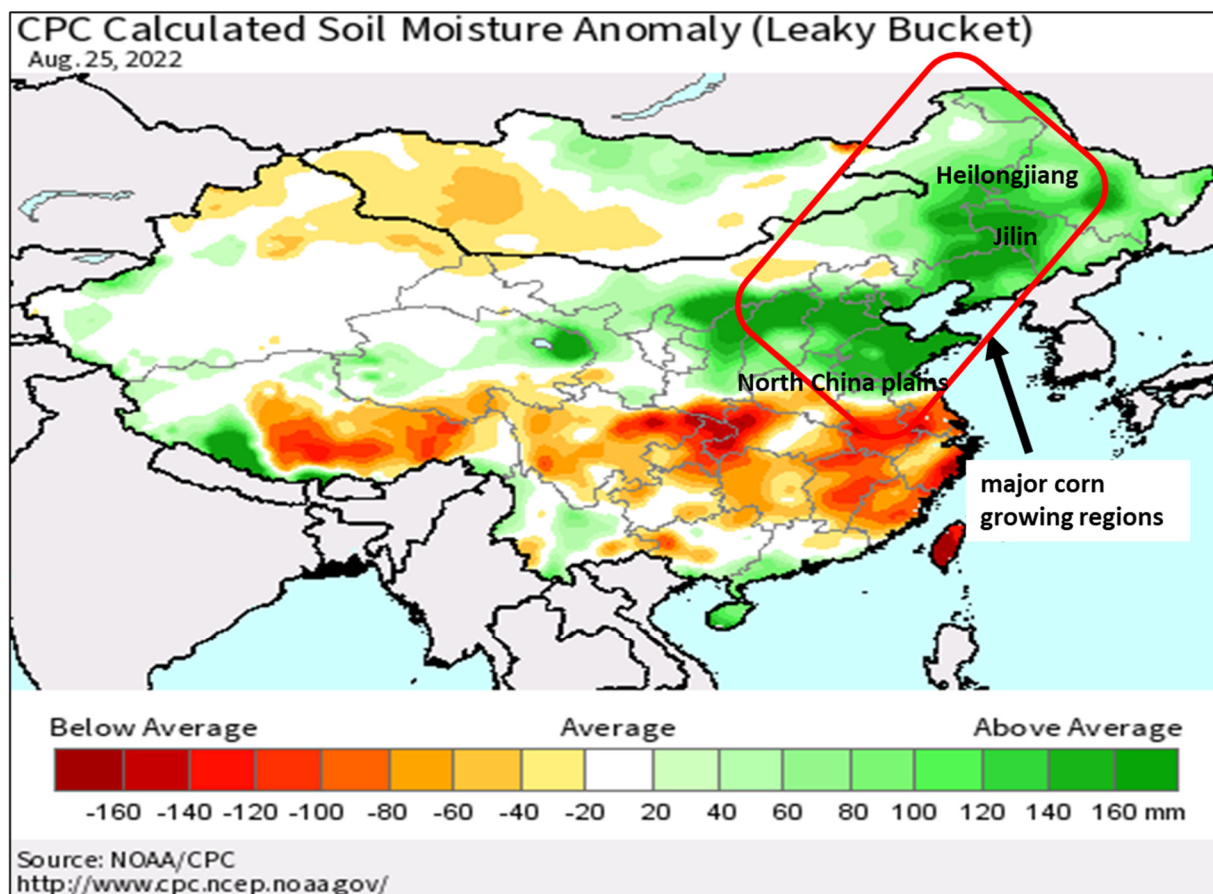
Source: MODIS Terra 8-day NDVI Anomaly
USDA/NASA Global Agricultural Monitoring (GLAM)
<https://glam1.gsfc.nasa.gov/>

Yield is up month-to-month due to favorable rainfall and minimal heat stress days throughout August in the western corn growing regions. Crop conditions, particularly in the oblasts bordering Moldova and Romania, improved since last month. Crop conditions throughout the rest of the corn belt, circled in red on the map, remained above average. Harvest began in early September. USDA crop production estimates for Ukraine include estimated output from Crimea and Ukrainian oblasts currently under Russian control due to the war. *(For more information, please contact Katie.McGaughey@usda.gov.)*

China Corn: Production Increased Due to Record Yield

USDA forecasts China marketing year (MY) 2022/23 corn production at a record 274.0 million metric tons (mmt), up 3 million or 1 percent from last month, up 1 percent from last year and 5 percent above the 5-year average of 262.1 mmt. Yield is forecast at a record 6.37 metric tons per hectare (mt/ha), up 1 percent from last month, up 1 percent from last year and 2 percent from the 5-year average.

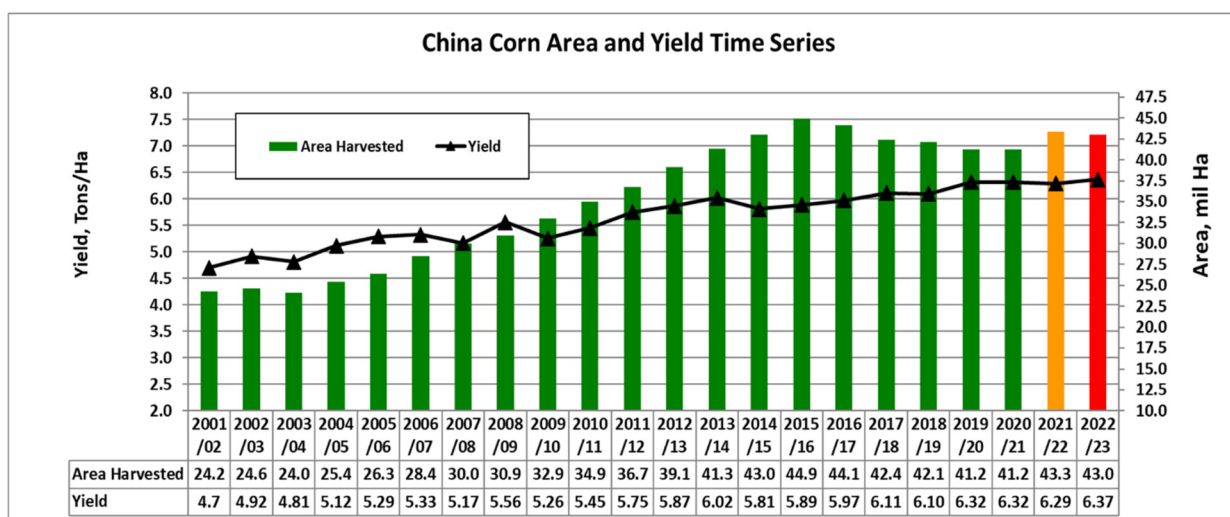
China Soil Moisture Conditions



USDA Foreign Agricultural Service
U.S. DEPARTMENT OF AGRICULTURE

Source: NOAA CPC

Area is estimated at 43.0 million hectares (ha), unchanged from last month, but down approximately 0.3 million ha or 1 percent from last year. In recent years there have been marginal increases in the major production provinces of Heilongjiang, Jilin, Shandong, Henan, Inner Mongolia, and Hebei. This has been primarily attributed to incentivizing agricultural policies, such as reversing past efforts to reduce corn area, increasing crop rotation of grain crops, subsidizing corn processors and ethanol initiatives, and implementing other incentives.

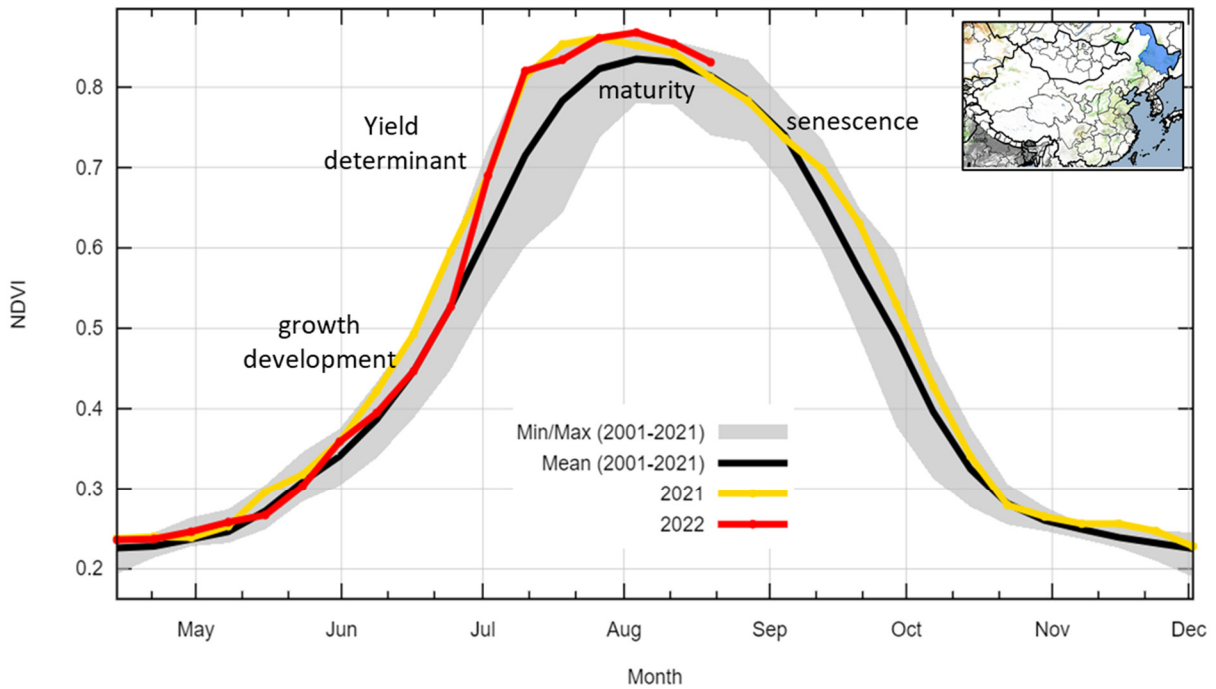


USDA Foreign Agricultural Service
U.S. DEPARTMENT OF AGRICULTURE

Source: USDA PSD Online

The MY 2022/23 season has been characterized by favorable growing conditions across the major corn belt in the northeast and north central plains. In general, the Northeast Provinces of Heilongjiang, Jilin, and Inner Mongolia, where at least half of the nation’s corn is produced, experienced ideal weather conditions for a significant portion of the growing season. The conditions facilitated rapid planting and crop establishment resulting in favorable corn yield expectations. The favorable weather conditions support record yields in the Northeast Provinces of Heilongjiang, Jilin, and Inner Mongolia. In contrast, some minor corn production regions in the southeast (including Sichuan) have experienced anomalously high temperatures and dry conditions that may result in lower-than-expected yields. In sum, the major production regions have experienced favorable rainfall and soil moisture conditions throughout the season, thereby significantly offsetting low productivity in the southeast regions.

Above Average 2022 NDVI Curve in Heilongjiang Province

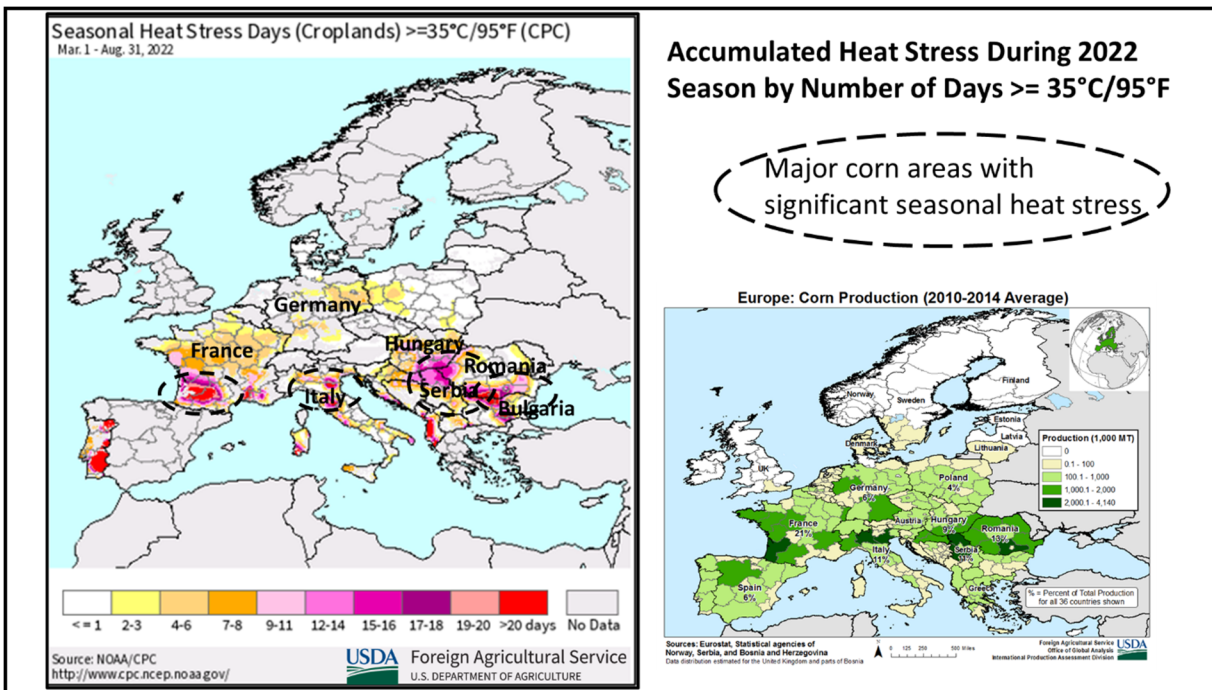


USDA Foreign Agricultural Service
U.S. DEPARTMENT OF AGRICULTURE

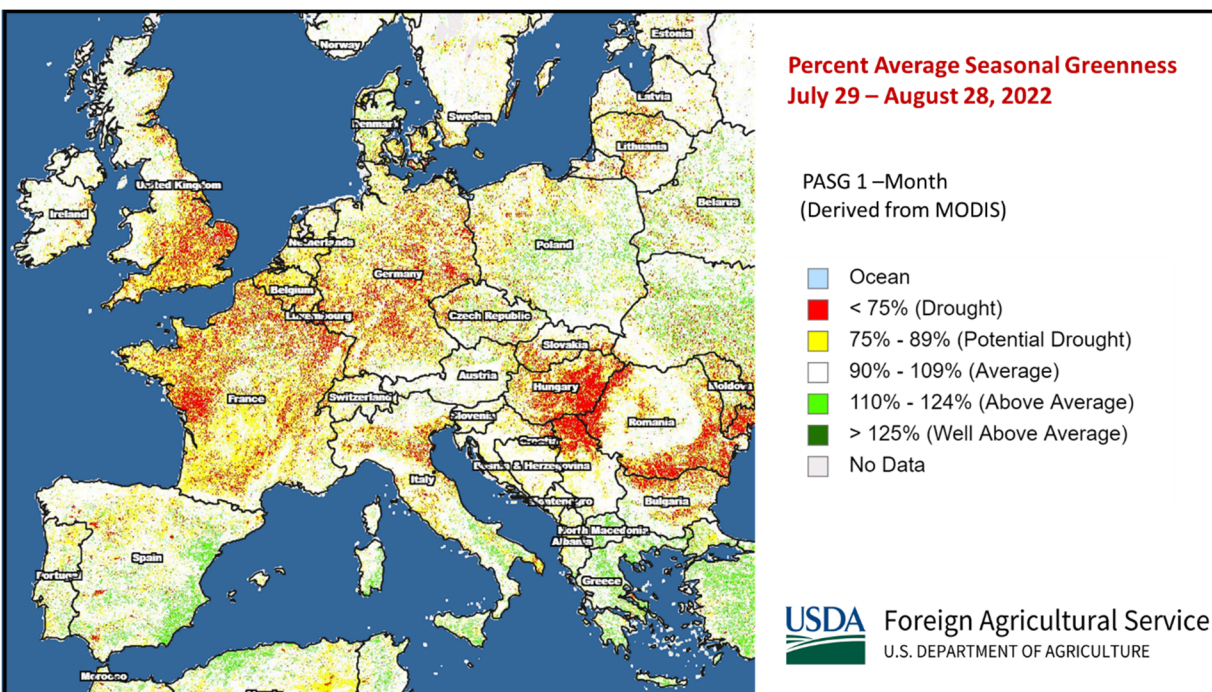
Source: USDA/NASA Global Agricultural Monitoring (GLAM)
MODIS Terra 8-day NDVI

The crop is at advanced physiological maturity stages and harvest typically starts in October. Approximately 75 percent of China's corn is used for feed. *(For more information, please contact Dath.Mita@usda.gov.)*

EU Corn: Harvest Underway with Deteriorated Yield Expectations

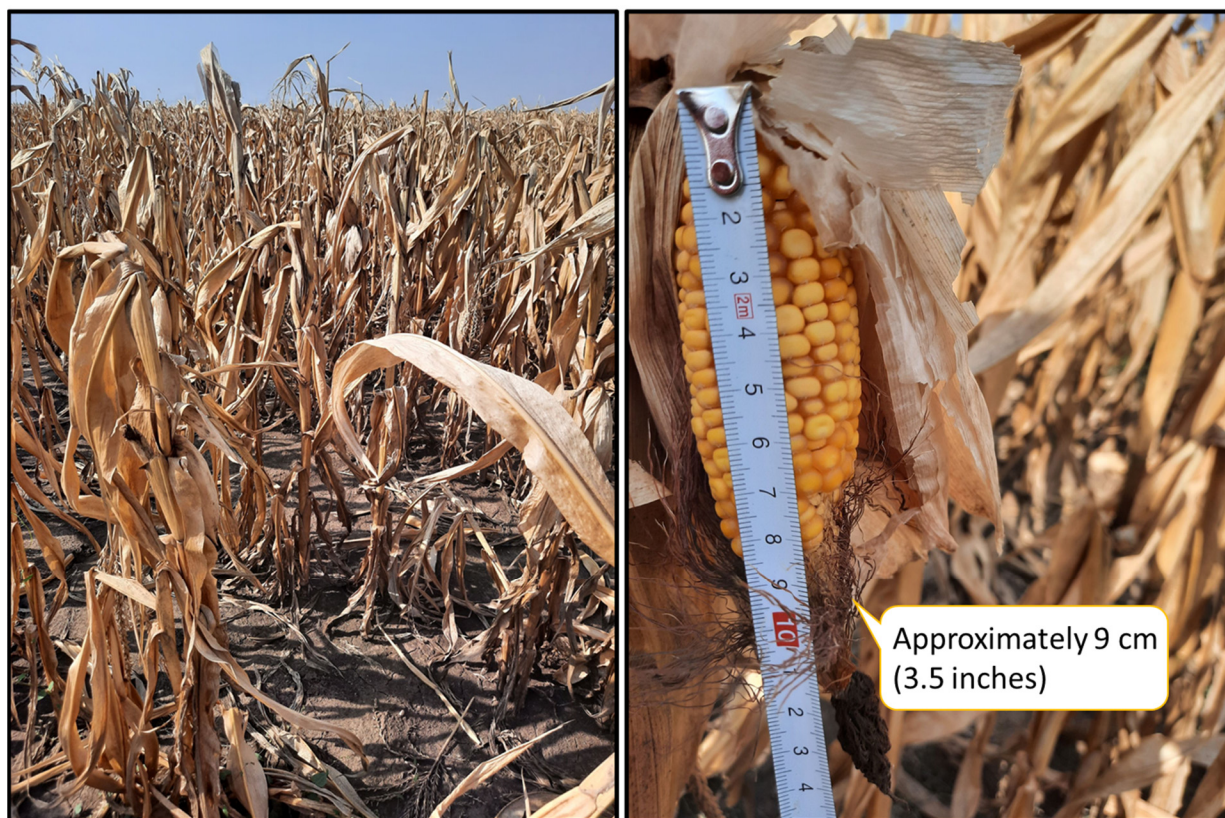


European Union (EU) (MY) 2022/23 corn production is forecast at 58.8 million metric tons (mmt), down 1.2 mmt (2 percent) from last month, 12.2 mmt (17 percent) below last year's crop, and 11 percent below the 5-year average. Area is estimated at 9.0 million hectares (mha), unchanged from last month, but 0.2 mha or 3 percent down from last year. Yield is estimated at 6.53 tons per hectare (t/ha), down 2 percent from last month, 15 percent from last year, and 14 percent from the 5-year average.



The corn harvest is ongoing in much of Europe and reports are confirming deteriorated yields. Extreme heat and historic drought in many of the major corn regions have created a difficult growing season for farmers. Rainfall was minimal, high temperatures dried plants and stymied kernel growth, and irrigation water was, and continues to be, restricted. The searing heat and crippling drought were constant, affecting pollination and grainfill in July and early August. The heat also accelerated plant maturity, and, in some cases, the crop was a month ahead of normal development. FAS/Bucharest traveled in southeastern Romania and found highly variable corn yields of 1 to 8 t/ha. Satellite derived Percent of Average Seasonal Greenness imagery for August shows conditions in many corn regions to be drying down much earlier than normal.

Corn Conditions in Southern Romania (Near Alexandria); August 30, 2022



 Foreign Agricultural Service
U.S. DEPARTMENT OF AGRICULTURE

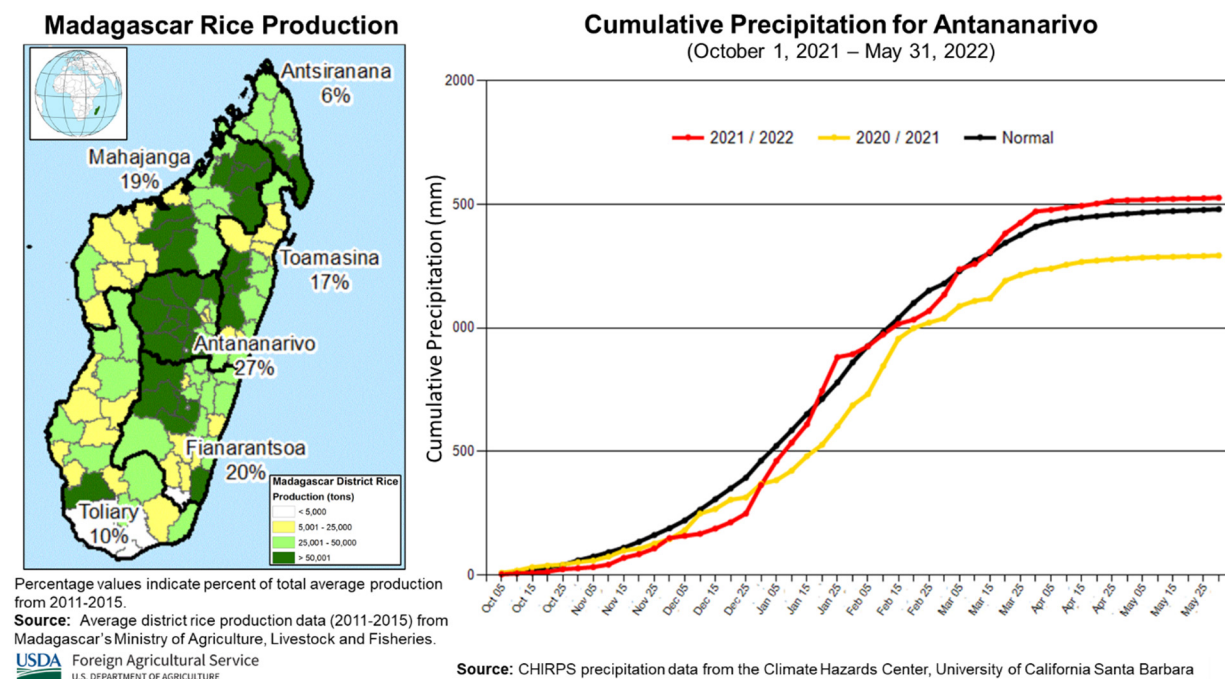
Pictures courtesy of USDA/FAS staff in Bucharest, Romania

Within the EU, the biggest reduction to corn occurred in France (the EU's largest corn producer), with a 0.4 mmt reduction. Significant reductions were also made in Romania (300 mmt), Germany (225 mmt), and in both Hungary and Poland, where each were reduced by 0.1 mmt. The combined, 1.2 mmt September EU reductions follow the much larger 8.0 mmt EU corn reduction in August.

For country-specific area, yield, and production estimates within the European Union (EU), please go to PSD Online at <https://apps.fas.usda.gov/PSDOnline/app/index.html#/app/home>, and select "Downloadable Data Sets." Select the zipped file for "EU Countries Area & Production." (For more information, please contact Bryan.Purcell@usda.gov.)

Madagascar Rice: Favorable Rains Improve Production Prospects

Madagascar's milled rice production for marketing year 2022/23 is estimated at 2.8 million metric tons, up 13 percent from last month, down 2 percent from last year, and up 5 percent from the 5-year average. Harvested area is estimated at 1.6 million hectares, unchanged from last month, down 3 percent from last year, and up 2 percent from the 5-year average. Yield is estimated at 2.69 metric tons per hectare, up 13 percent from last month, up 1 percent from last year, and up 3 percent from the 5-year average. Total harvested area is expected to be less than last year after two destructive tropical cyclones in February caused crop area losses in eastern Madagascar.

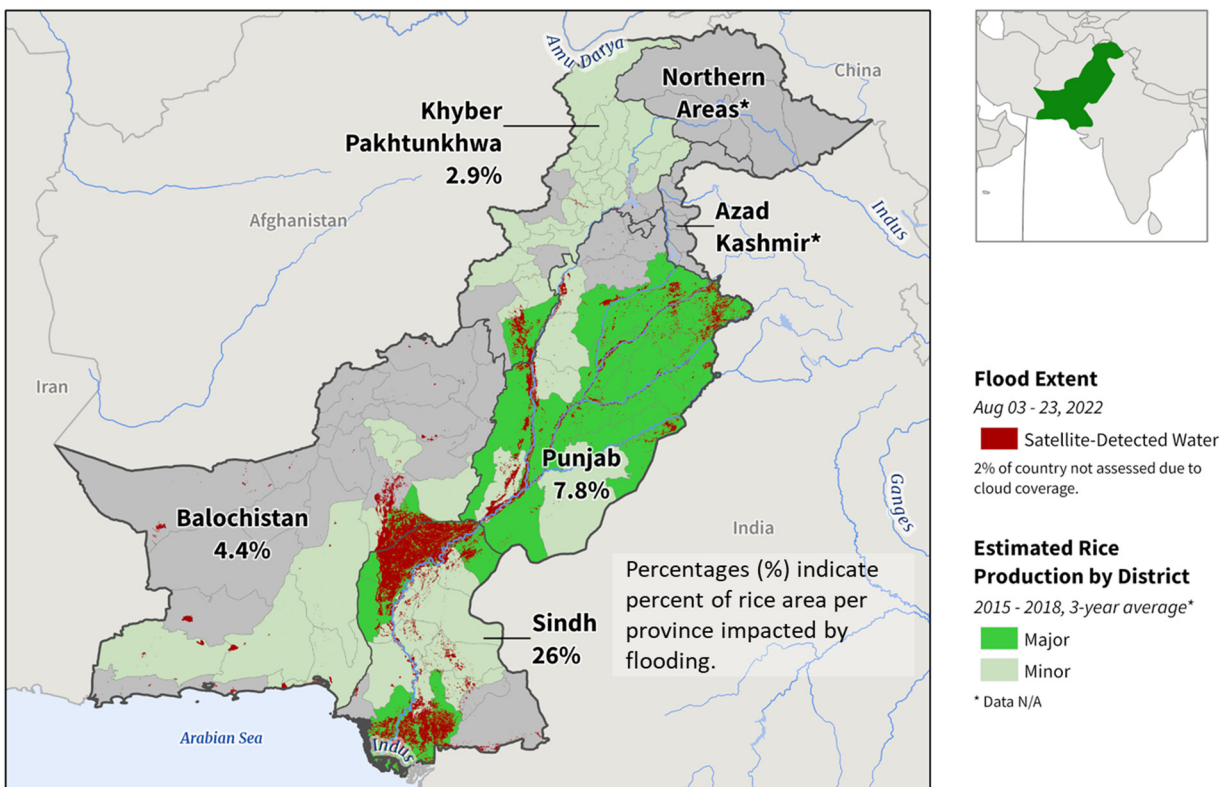


Rice in Madagascar is planted during November and December and harvested from April through June. Rains from November through January were below average which delayed planting, but tropical cyclones Batsirai (February 5) and Emnati (February 23) provided beneficial rains for the main rice producing regions in the central and northern half of the country. Total production is expected to be above-average after most of the country received average to above-average seasonal rainfall which helped to fill water dams for the irrigated crop and boosted rainfed yields. Approximately 80 percent of Madagascar's rice area is irrigated.

Madagascar is the third largest rice producer in Africa, behind Nigeria and Egypt. Rice is planted in almost all administrative zones in Madagascar and rice is the main subsistence crop grown. Madagascar's government has set a goal to increase rice production by improving the supply of inputs, introducing better crop management practices and varieties, increasing technical extension support, and rehabilitating irrigation infrastructure. *(For more information, please contact Curt.Reynolds@usda.gov.)*

Pakistan Rice: Production Reduced by Flooding

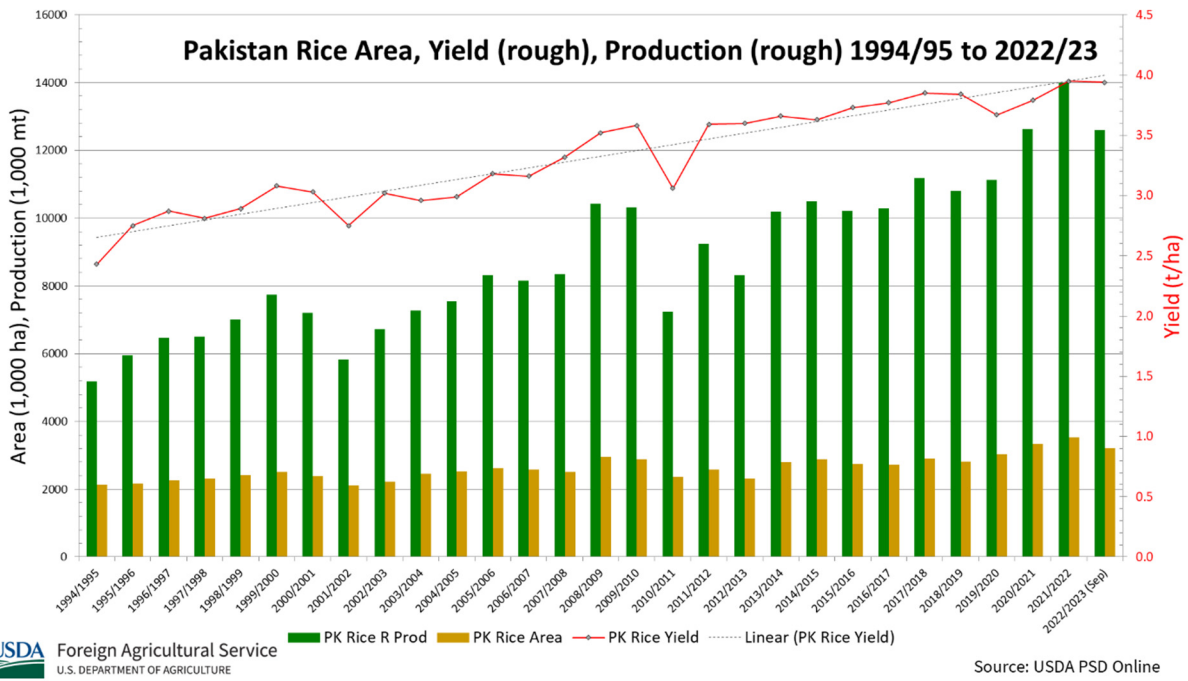
Pakistan Rice-Producing Areas: August Flood Extent



USDA Foreign Agricultural Service
U.S. DEPARTMENT OF AGRICULTURE

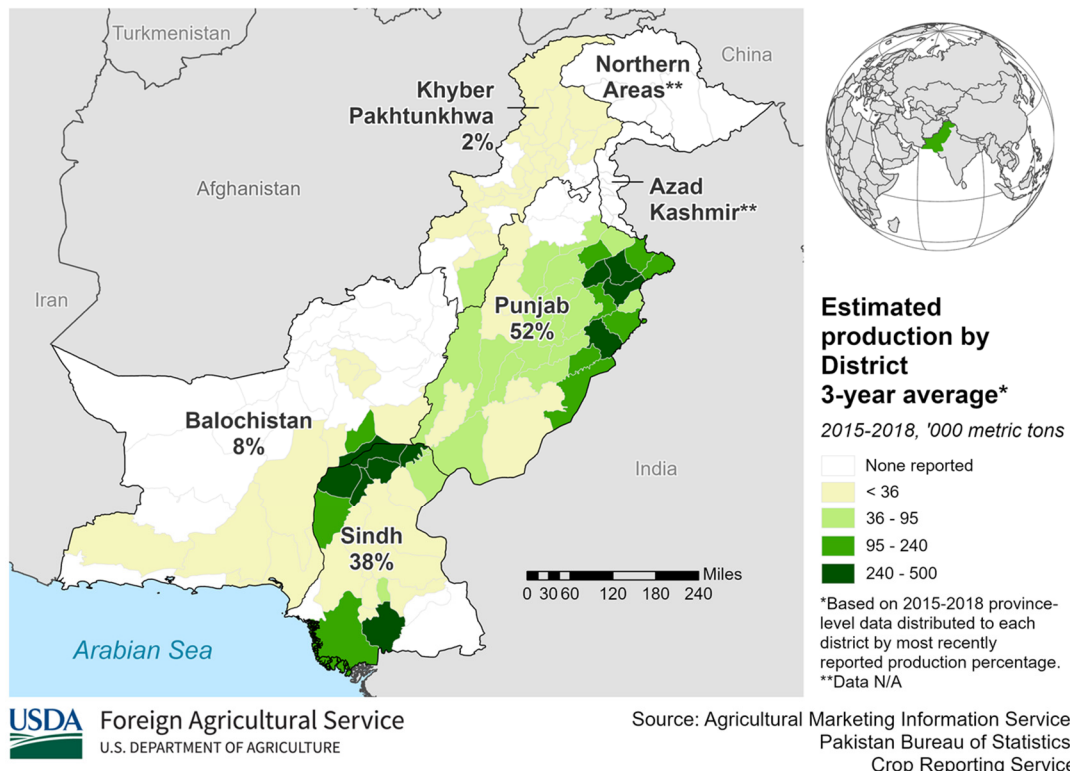
Sources: United Nations Satellite Center (UNOSTAT), VIIRS Flood Extent (Aug 03 - 23, 2022); 2018 Agricultural Marketing Information Service, Pakistan; Khyber Pakhtunkhwa (K.P.) Bureau of Statistics

Pakistan rice production for marketing year 2022/23 is estimated at 8.4 million metric tons (mmt) (milled basis), down 0.5 mmt (6 percent) from last month, and down 0.9 mmt (10 percent) from last season's record crop. Harvested area is estimated at 3.2 million hectares (mha), down 0.3 mha (10 percent) from last season's record area. Yield is estimated at 3.94 tons per hectare (t/ha), similar to last month and last season.



Production is revised down based on estimated lower area. The area estimate is reduced due to flooding in production areas of northwest Sindh and scattered areas of Punjab. Due to the flooding, MY 2022/23 projected harvested area is reduced 6 percent from last month to 3.2 million hectares. If the flood waters recede quickly, some production in these areas may recover.

Pakistan: Rice Production

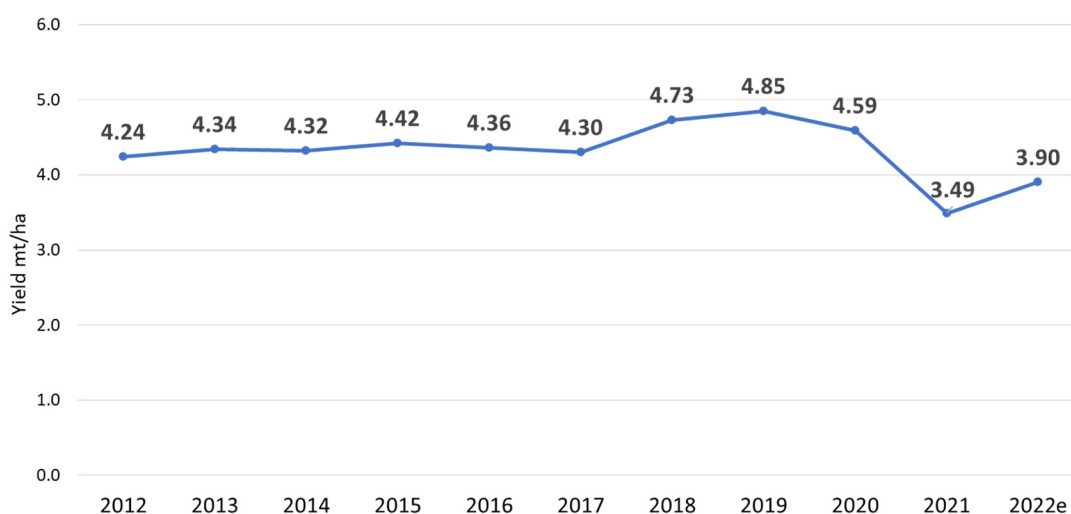


Rice is grown under irrigated conditions with the Tarbela Reservoir providing most of the irrigation water. Pakistan is a leading producer and exporter of Basmati and IRRI rice (white long grain rice). Rice ranks second among the staple food grain crops in Pakistan and exports are a major source of foreign exchange earnings. Pakistan has two major rice-producing provinces, namely Punjab and Sindh. Both provinces account for nearly 90 percent of total rice production. Punjab, due to its agro-climatic and soil conditions, produces 100 percent of the Basmati rice in the country. (For more information, please contact James.Crutchfield@usda.gov.)

Sri Lanka Rice: Production Estimate Up Slightly; Yield Rebounds from Last Year

USDA estimates marketing year (MY) 2022/23 Sri Lanka rice production at 2.7 million metric tons milled, up nearly 1 percent from MY 2021/22. This 1 percent increase is due to availability of agricultural inputs such as chemical fertilizers. Harvested area is estimated at 1.0 million hectares, down 10 percent from last year. Yields are estimated to reach 3.90 metric tons per hectare, up nearly 12 percent from last year.

Sri Lanka Rice Yield (2012 – 2022)



USDA Foreign Agricultural Service
U.S. DEPARTMENT OF AGRICULTURE

Source: USDA PSD Online

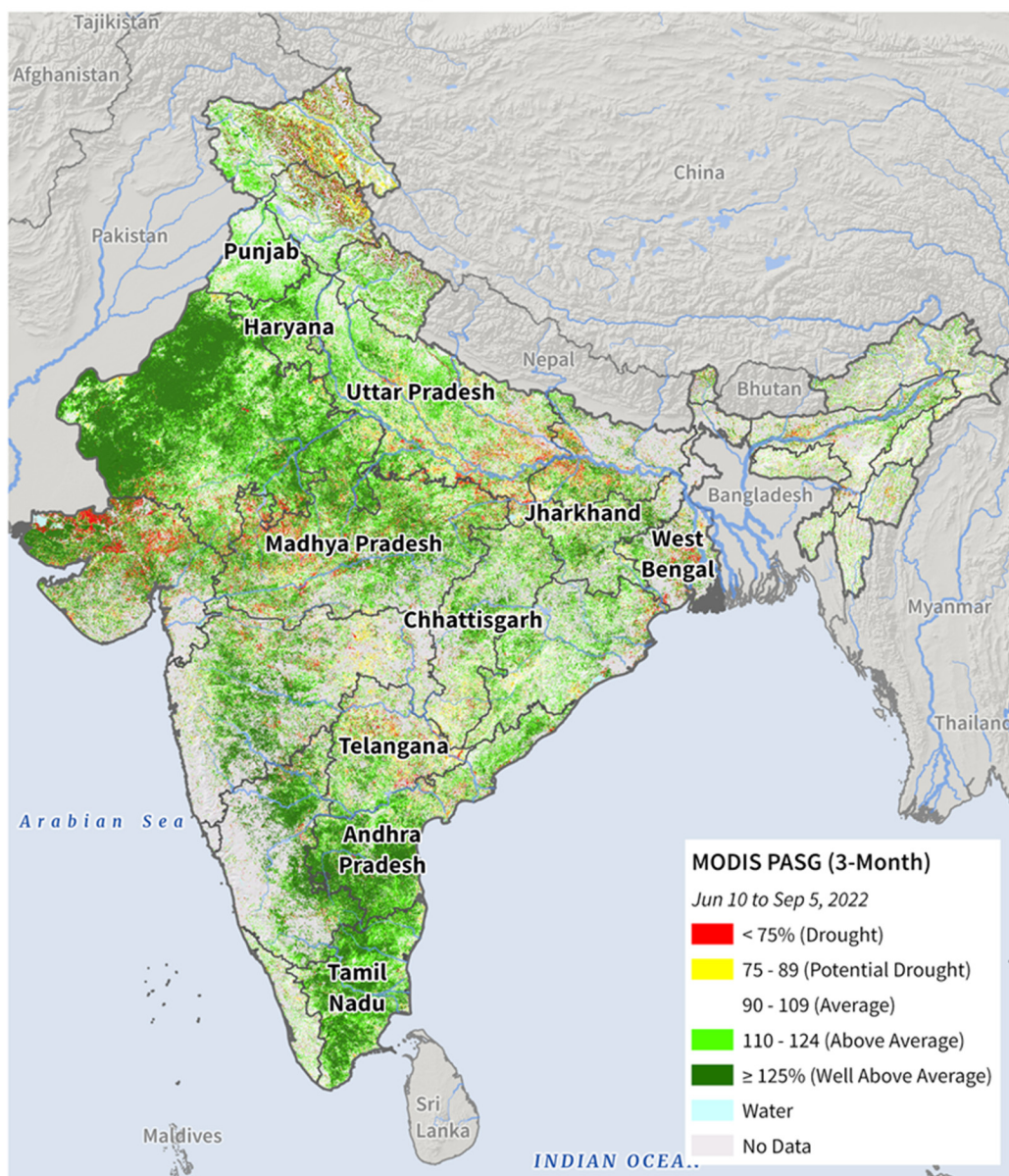
Although the government lifted the chemical fertilizer ban last year, Sri Lanka’s economic collapse impacted farmers, who had trouble affording agricultural inputs such as fertilizers and seeds. According to reports, the 2022 *yala* rice yields are lower, however, the 2022/23 *maha* season will likely offset the lower *yala* production. Recently, the World Bank, Asian Development Bank, and others pledged to provide loans or donations for agricultural inputs to low-income farmers for the 2022/23 *maha* season.

USDA combines the 2022 *yala*, which accounts for 40 percent of the total production, and the 2022/23 *maha* crop for the total estimate. The 2022 *yala* harvest will be completed in September. (For more information, please contact Arnella.Trent@usda.gov)

India Rice: Yields Forecast to Drop Due to Dry Conditions in the Northeast

USDA forecasts India rice production for marketing year (MY) 2022/23 at 126.5 million metric tons (milled), down 2 percent from last month and down nearly three percent from MY 2021/22. This decline will mark the first time without a year-to-year increase in production since MY 2015/16. The 2022 Southwest monsoonal rains have been above average, except for the Northeast region. Harvested area is expected at 45.5 million hectares, down 1 percent from last month and 3 percent from last year. Yield is forecast at 4.17 metric tons per hectare, down slightly from August, but up marginally from last year.

India: Percent of Average Seasonal Greenness (3-month)

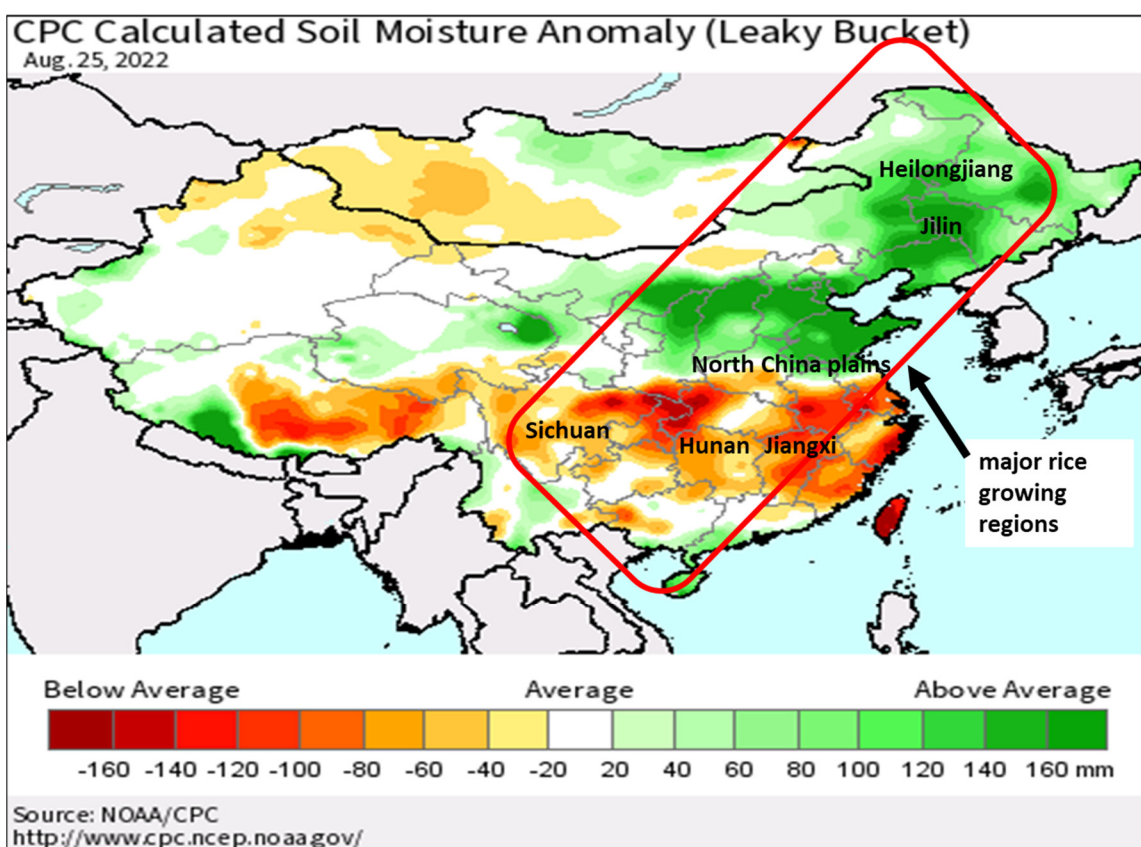


The 2022 Northeast region, which accounts for 30 percent of total *kharif* planting, continues to experience drought-like conditions. Cumulative rainfall from June to August is down 19 percent. In West Bengal and Uttar Pradesh, the largest producers, cumulative rainfall during the monsoon is down 22 percent and 28 percent, respectively. Consequently, satellite-derived Percent of Average Seasonal Greenness indicates crop vigor is below average in West Bengal, with primarily rainfed crops, and average in Uttar Pradesh, which has access to irrigation.

Kharif rice, which is approximately 70 percent of total rice production, will be harvested in early November. *Rabi* rice, which accounts for roughly 30 percent of total rice production, will be planted from November to January and will be harvested in late April. (For more information, please contact Arnella.Trent@usda.gov)

China Rice: High Temperatures and Dryness Decrease Production Prospects

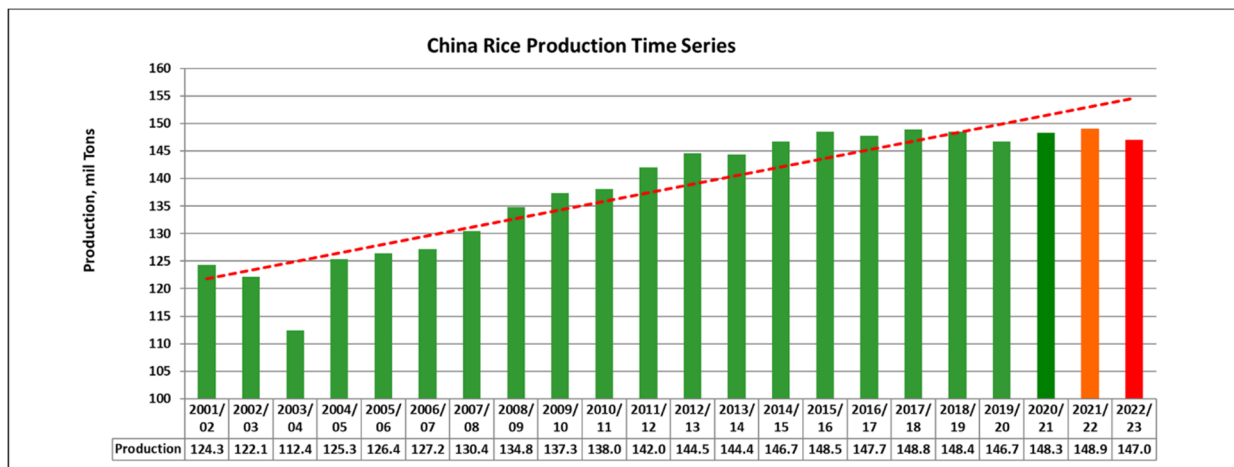
China Soil Moisture Conditions



USDA Foreign Agricultural Service
U.S. DEPARTMENT OF AGRICULTURE

Source: NOAA CPC

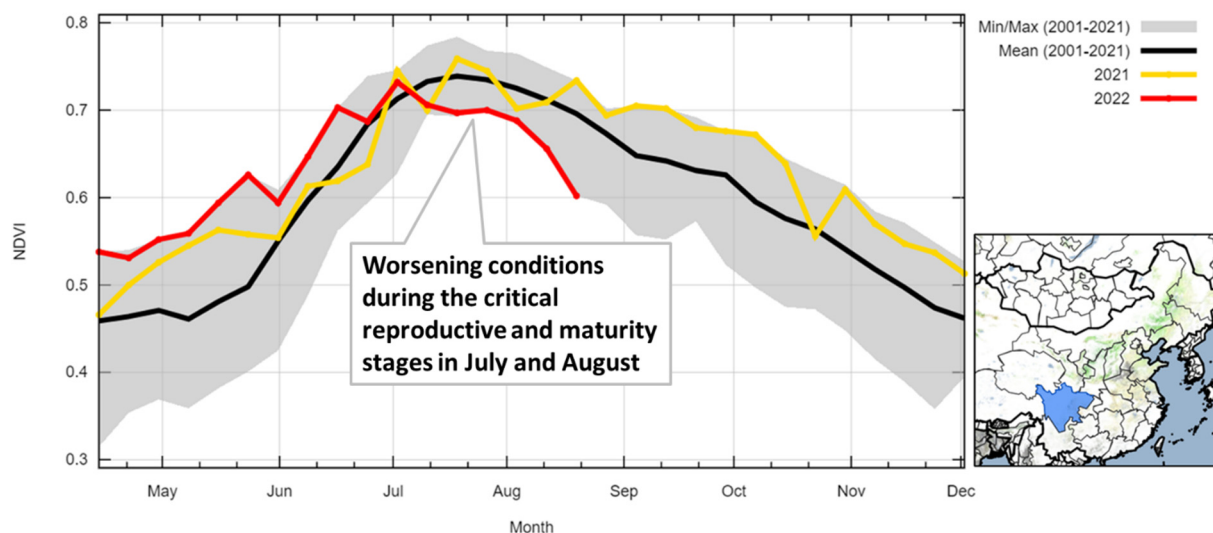
USDA forecasts China's marketing year (MY) 2022/23 rice production at 147.0 million metric tons (mmt) (milled basis), down 1 percent or 2.0 mmt from last month and down 1 percent from last year and from the 5-year average. Area is estimated at 30.0 million hectares (mha), unchanged from last month, up marginally from last year, but down marginally from the 5-year average. Yield (rough) is forecast at 7.00 metric tons per hectare (mt/ha), down 1 percent from last month, 2 percent from last year, and less than 1 percent below the 5-year average of 7.03 mt/ha.



----- linear regression line

Unseasonably high temperatures and dry conditions, especially during July and August, in large parts of the lower Yangtze Valley, including Sichuan, Hunan, Jiangxi, Hubei, and Anhui provinces, have stoked fears of yield reductions of single rice crop and the late double rice crop. Dryness has persisted since early July, and soil moisture is significantly below normal for this time of the year across the southern Yangtze valley, a core rice production area. In addition, the Standardized Precipitation Index (SPI) indicates drought is prevalent across most of the southern provinces of the Yangtze Valley, especially in Sichuan, Jiangxi, Anhui, and Hubei. These provinces account for approximately 56 mmt or 39 percent of total China rice.

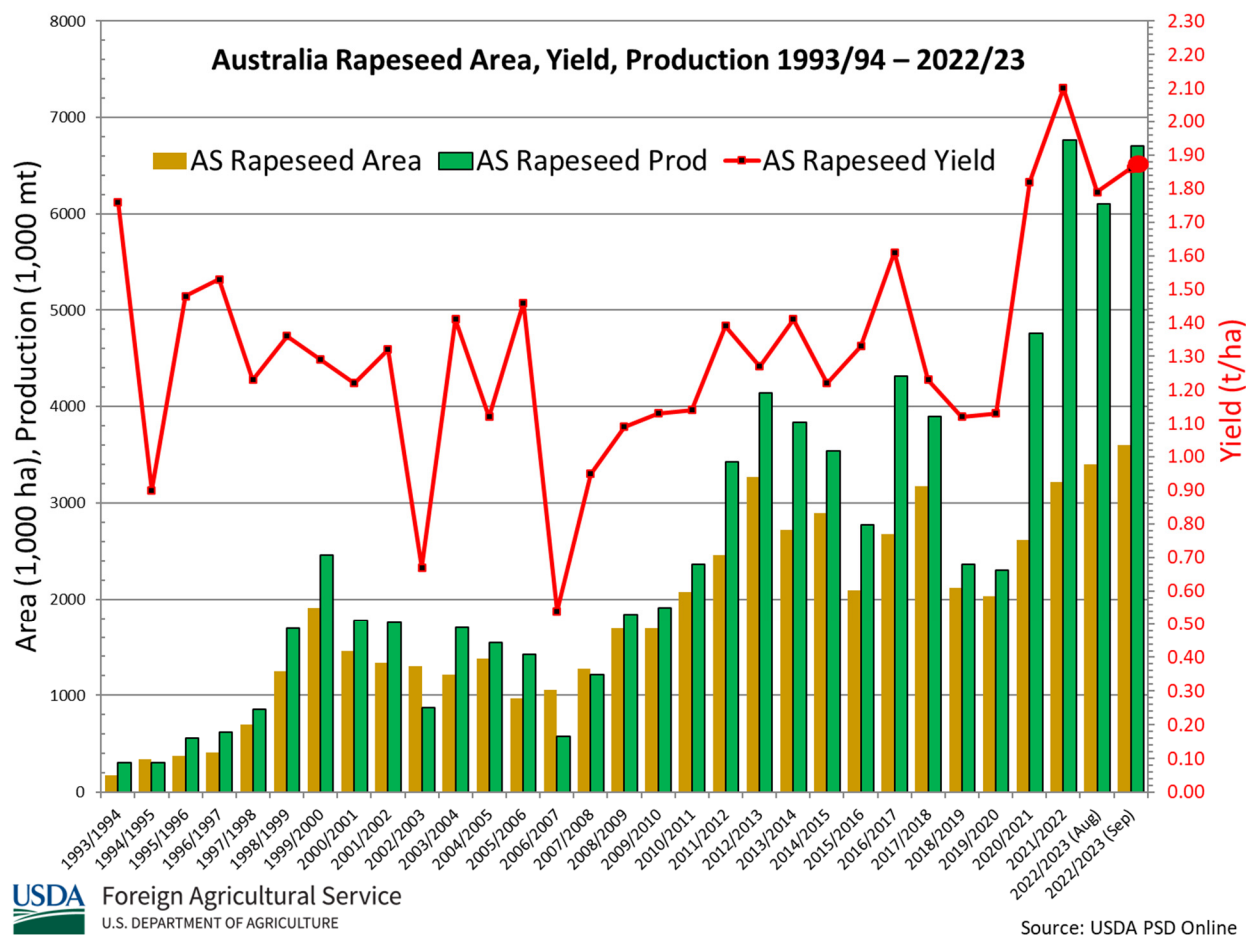
Deteriorating 2022 NDVI Curve in Sichuan Province



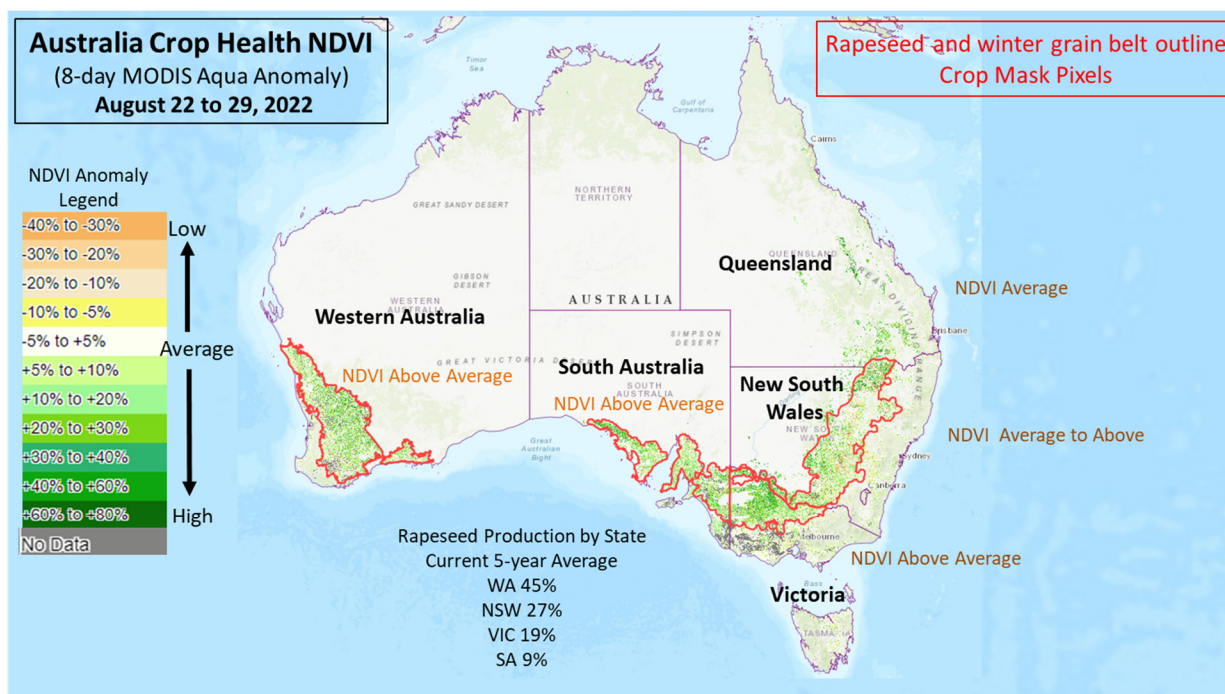
China has three rice plantings. The single rice crop accounts for roughly 66 percent of total rice production and is planted from April to June. The early-double rice crop accounts for 16 percent

and is planted from April to May. The late-double rice crop accounts for 18 percent and is planted from July to August. Concerns about the impact of high temperatures and drier-than-normal soil moisture conditions are mainly focused on the single and the late-double rice crops. During the July and August period, the single rice crop was in mid-season to advanced physiological-reproductive growth stages, while the late-double rice crop was in the early-season vegetative stage. The drier-than-normal soil moisture conditions also led to planting delays for late-double rice with less than a month left in the optimum planting window. (For more information, please contact Dath.Mita@usda.gov.)

Australia Rapeseed: Production Near Record



USDA forecasts Australia rapeseed production for marketing year (MY) 2022/23 at 6.7 million metric tons (mmt), up 0.6 mmt or 10 percent from last month, but down 62,000 metric tons or less than 1 percent from last year’s record. Yield is forecast at 1.86 tons per hectare, up 4 percent from last month, but down 12 percent from last year.

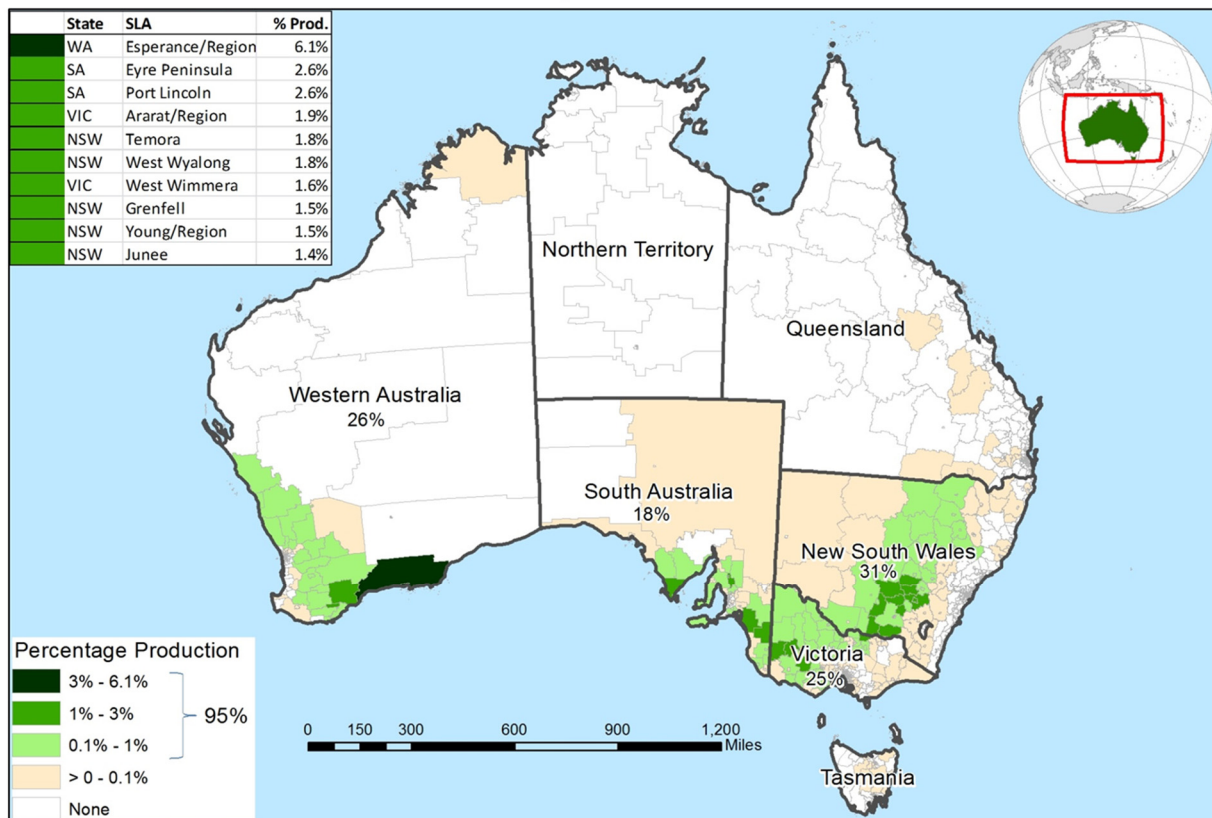


Source: MODIS 8-day NDVI Anomaly Composite (NASA GIMMS),
GeoCover LandCover 2010 Agricultural Mask

USDA Foreign Agricultural Service
U.S. DEPARTMENT OF AGRICULTURE

Strong prices supported a record harvested area of 3.6 million hectares and is estimated 12 percent over last season. Above-average rainfall prior to sowing in the two largest producing states of Western Australia and New South Wales provided beneficial soil moisture for planting and throughout germination. Favorable seasonal conditions followed across much of the grain growing regions of Australia. Rapeseed sowing commenced in April and continued into June. Rapeseed is entering the critical flowering crop stage with favorable soil moisture. Harvesting will commence in November and will conclude in December.

Australia: Rapeseed Production



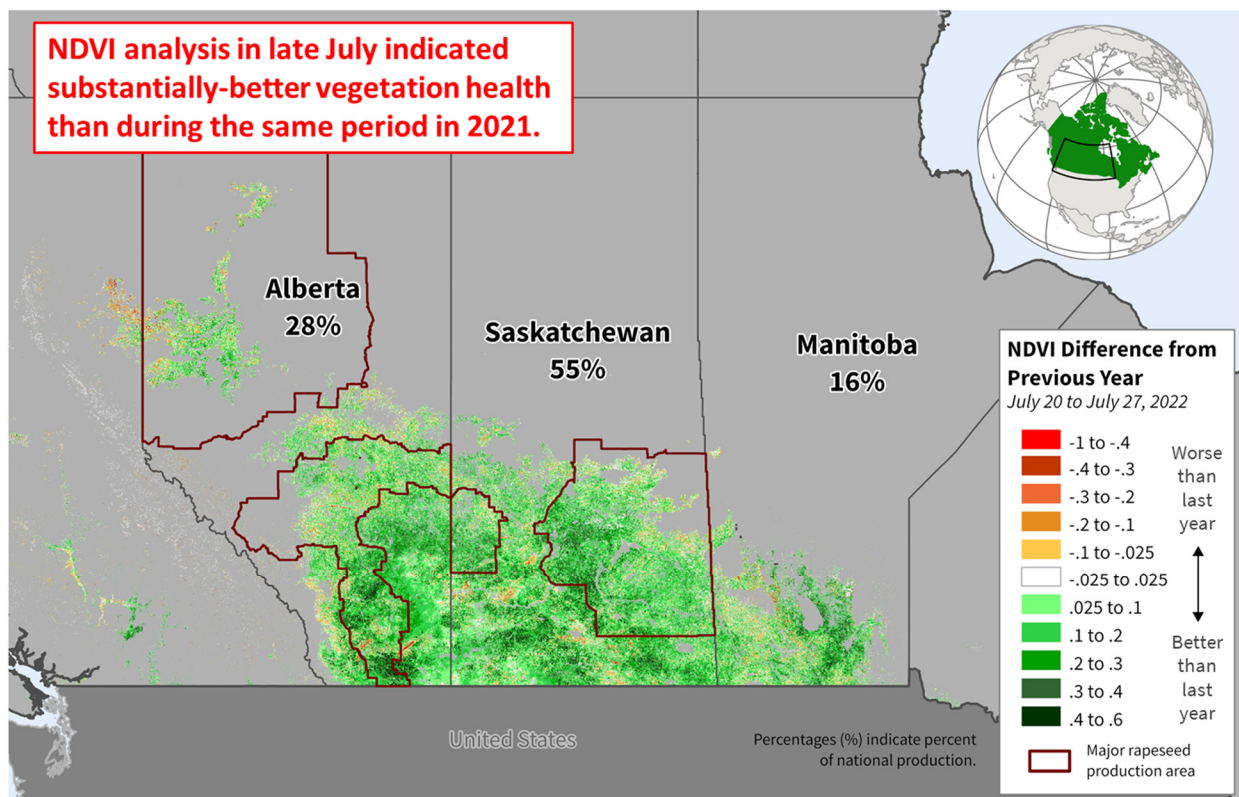
Data Sources: ABS Ag Census with 2016 SLA boundaries (SA2), Average percent production of MY 2005/06, MY 2010/11, and MY 2015/16; Australian Bureau of Agricultural and Resource Economics and Sciences (ABARES)

USDA Foreign Agricultural Service
U.S. DEPARTMENT OF AGRICULTURE

Rapeseed production is distributed across the four main agricultural producing states. Western Australia produces the largest portion of Australia's rapeseed with 45 percent (5-year average) and the remaining production is split among New South Wales (27 percent), Victoria (19 percent) and South Australia (9 percent). (For more information, please contact James.Crutchfield@usda.gov.)

Canada Rapeseed: Production Up 45 Percent from Last Year

Crop Conditions in the Canadian Prairies: 2022 versus 2021



USDA Foreign Agricultural Service
U.S. DEPARTMENT OF AGRICULTURE

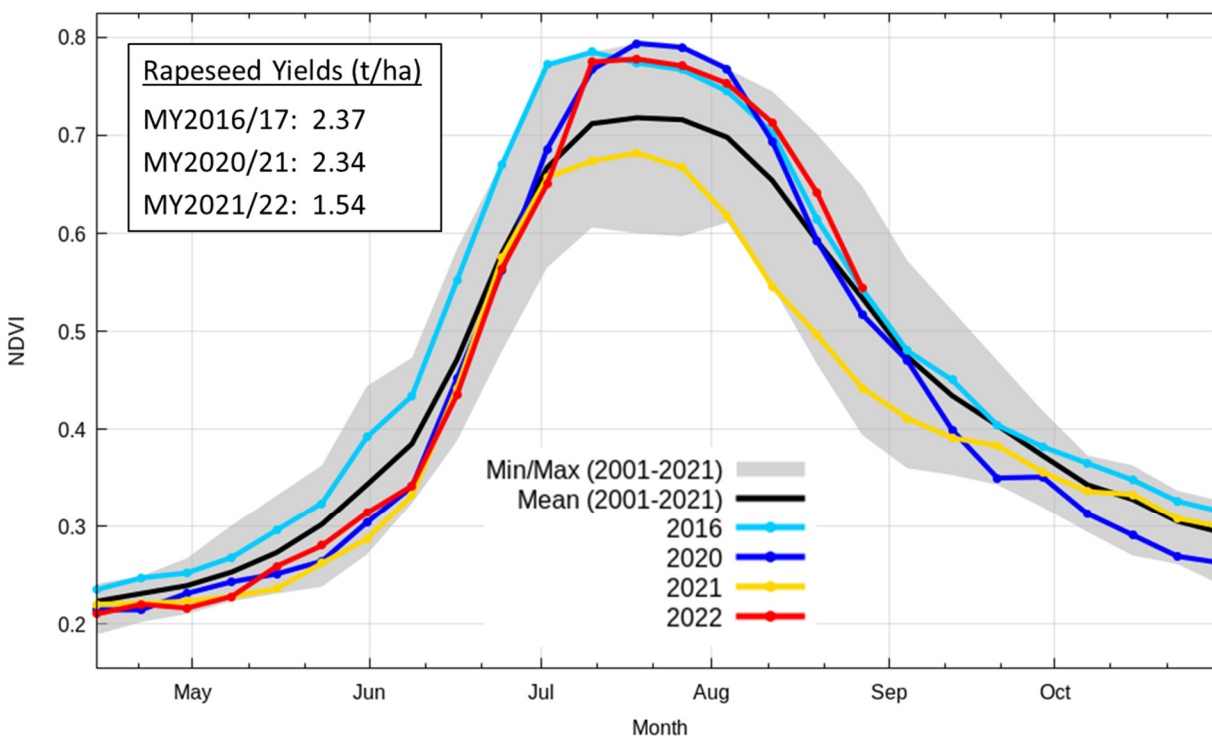
Sources: USDA/NASA, NDVI Difference from Previous Year; Statistics Canada, Estimated Production by Small Area Data (SAD) Region; Agriculture and Agri-Food Canada (AAFC), Annual Crop Inventory 2021 Crop Mask

USDA estimates Canada rapeseed production for marketing year (MY) 2022/23 at 20.0 million metric tons (mmt), unchanged from last month, but up 45 percent from last year and 5 percent above the 5-year average. Harvested area is estimated at 8.6 million hectares, unchanged from last month, but down 4 percent from last year, and 3 percent below the 5-year average. Yield is estimated at 2.33 metric tons per hectare (t/ha), up 51 percent from last year when the Prairies experienced historic drought.

NDVI 8-Day Time Series

Rapeseed in Alberta, Saskatchewan, and Manitoba

August 28, 2022



Sources: USDA/NASA Global Agricultural Monitoring (GLAM) MODIS Terra 8-day NDVI; Agriculture and Agri-Food Canada (AAFC), Annual Crop Inventory, 5-Year Average for Rapeseed 2015-2019; Statistics Canada; USDA PSD Online

Crop conditions are substantially improved over last year in the Prairies, and average to near-average yields are anticipated for field crops in the region. USDA estimates the rapeseed yield to be near average (approximately 2.32 t/ha) when omitting the yield from last year's drought-ravaged crop as an outlier. The satellite-derived Normalized Difference Vegetation Index (NDVI) indicates rapeseed crop conditions to be above-average, particularly during the critical reproductive stages throughout July. The NDVI time series graph suggests conditions similar to MY 2020/21, where yield reached 2.34 t/ha. Planting and crop progress delays were widespread during the early part of the season, tempering overall yield potential. However, crop conditions rapidly improved in late June and throughout July, as rainfall and/or warm temperatures arrived where needed. Harvest has begun in all three Prairie provinces and is expected to continue through October. (For more information, please contact Aaron.Mulhollen@usda.gov.)



**World Agricultural Production
U.S. Department of Agriculture**

Foreign Agricultural Service / Global Market Analysis
International Production Assessment Division (IPAD)
Ag Box 1051, Room 4630, South Building
Washington, DC 20250-1051

<https://ipad.fas.usda.gov/>

Telephone: (202) 720-1662 Fax: (202) 720-1158

This report uses information from the Foreign Agricultural Service’s (FAS) global network of agricultural attachés and counselors, official statistics of foreign governments and other foreign source materials, and the analysis of economic data and satellite imagery. Estimates of foreign area, yield, and production are from the International Production Assessment Division, FAS, and are reviewed by USDA’s Inter-Agency Commodity Estimates Committee. Estimates of U.S. area, yield, and production are from USDA’s National Agricultural Statistics Service. Numbers within the report may not add to totals because of rounding. This report reflects official USDA estimates released in the World Agricultural Supply and Demand Estimates (WASDE-584), September 12, 2022.

Printed copies are available from the National Technical Information Service. Download an order form at http://www.ntis.gov/products/specialty/usda/fas_a-g.asp, or call NTIS at 1-800-363-2068.

The FAS International Production Assessment Division prepared this report. The next issue of World Agricultural Production will be released after 12:00 p.m. Eastern Time, October 12, 2022.

Conversion Table

Metric tons to bushels

Wheat, soybeans	=	MT * 36.7437
Corn, sorghum, rye	=	MT * 39.36825
Barley	=	MT * 45.929625
Oats	=	MT * 68.894438

Metric tons to 480-lb bales

Cotton	=	MT * 4.592917
--------	---	---------------

Metric tons to hundredweight

Rice	=	MT * 22.04622
------	---	---------------

Area & weight

1 hectare	=	2.471044 acres
1 kilogram	=	2.204622 pounds



For further information, contact:
U.S. Department of Agriculture
Foreign Agricultural Service
Global Market Analysis

International Production Assessment Division
 Ag Box 1051, Room 4630, South Building
 Washington, DC 20250-1051

Telephone: (202) 720-1662

Fax: (202) 720-1158

GENERAL INFORMATION

Senior Director	Ronald Frantz	202-720-4056	ronald.frantz@usda.gov
Director	Robert Tetrault	202-720-1071	robert.tetrault@usda.gov
Administrative Assistant	Vacant		
USDA Remote Sensing Advisor	Vacant		
Sr. Analyst/Technical Lead	Curt Reynolds, Ph.D.	202-690-0134	curt.reynolds@usda.gov
Sr. Analyst/ Satellite Imagery Archives Manager/Technical Lead	Dath Mita, Ph.D.	202-720-7339	dath.mita@usda.gov
Sr. Analyst/Technical Lead	Jim Crutchfield	202-690-0135	james.crutchfield@usda.gov
GIS Mapping/Imagery Analyst	Lisa Colson	202-720-6652	lisa.colson@usda.gov
WAP Coordinators	Ifeoma Collins	202-720-0240	ifeoma.collins@usda.gov
	Aaron Mulhollen	202-690-0131	aaron.mulhollen@usda.gov

COUNTRY- AND REGION-SPECIFIC INFORMATION

South America, Argentina, Venezuela, and Colombia	Vacant		
Western and Central Europe, and North Africa	Bryan Purcell	202-690-0138	bryan.purcell@usda.gov
Russia, Ukraine, Kazakhstan, Moldova, and Belarus	Katie McGaughey	202-720-9210	katie.mcgaughey@usda.gov
South Asia, Sri Lanka Bangladesh, India, and Nepal	Arnella Trent	202-720-0881	arnella.trent@usda.gov
East Asia, China, and Japan	Dath Mita, Ph.D.	202-720-7339	dath.mita@usda.gov
Sub-Saharan Africa, Nigeria and South Africa	Curt Reynolds, Ph.D.	202-690-0134	curt.reynolds@usda.gov
S.E. Asia, Indonesia, Thailand, Malaysia, Cambodia and Vietnam	Justin Jenkins	202-720-0419	justin.jenkins@usda.gov
Central America, Mexico, and Western United States	Ifeoma Collins	202-720-0240	ifeoma.collins@usda.gov
Australia, New Zealand, Pakistan Papua New Guinea and South Pacific Islands	Jim Crutchfield	202-690-0135	james.crutchfield@usda.gov
Middle East, Central Asia, Afghanistan Iraq, Iran, and Syria	Iliana Mladenova, Ph.D.	202-690-2315	iliana.mladenova@usda.gov
Canada, Caribbean, Eastern United States	Aaron Mulhollen	202-690-0131	aaron.mulhollen@usda.gov
Brazil	Sunita Yadav-Pauletti, Ph.D.		sunita.yadav-pauletti@usda.gov



The Foreign Agricultural Service (FAS) updates its production, supply and distribution (PSD) database for cotton, oilseeds, and grains at 12:00 p.m. on the day the *World Agricultural Supply and Demand Estimates* (WASDE) report is released. This circular is released by 12:15 p.m.

FAS Reports and Databases:

World Agricultural Production

Current: <https://www.fas.usda.gov/data/world-agricultural-production>

Archive: <https://usda.library.cornell.edu/concern/publications/5q47rn72z?locale=en>

USDA's Foreign Agricultural Service (FAS) publishes a monthly report on crop acreage, yield and production in major countries worldwide. Sources include reporting from FAS's worldwide offices, official statistics of foreign governments, and analysis of economic data and satellite imagery. The reports reflect official USDA estimates released in the monthly *World Agricultural Supply and Demand Estimates* (WASDE).

World Markets and Trade

Current: <https://www.fas.usda.gov/data>

Archive:

https://usda.library.cornell.edu/catalog?f%5Bmember_of_collections_ssim%5D%5B%5D=Foreign+Agricultural+Service&locale=en

USDA's Foreign Agricultural Service (FAS) publishes monthly and quarterly reports which include data on U.S. and global trade, production, consumption and stocks, as well as analysis of developments affecting world trade in oilseeds, grains, cotton, livestock and poultry. The reports reflect official USDA estimates released in the monthly *World Agricultural Supply and Demand Estimates* (WASDE).

Global Agricultural Information Network (GAIN)

<https://www.fas.usda.gov/databases/global-agricultural-information-network-gain>

USDA's Foreign Agricultural Service (FAS) provides timely reports on foreign markets through the Global Agriculture Information Network (GAIN) database. An average of 2,000 reports are added each year, with reports going back to 1995. GAIN reports are compiled by FAS' global market intelligence network, which includes FAS foreign service officers and locally engaged staff in over 90 overseas offices world-wide. They provide on-the-ground intelligence, insight, and analysis on nearly 200 countries, delivering information on foreign agricultural markets, crop conditions, and agro-political dynamics of interest to U.S. agriculture. GAIN reports contain assessments of commodity and trade issues made by USDA staff and are not necessarily statements of official U.S. government policy.

Production, Supply and Distribution (PS&D) Online

<https://apps.fas.usda.gov/psdonline/app/index.html#/app/home>

PSD Online is the public repository for USDA's Official Production, Supply and Distribution forecast data and reports for key agricultural commodities. PSD Online data are reviewed and updated monthly by an interagency committee chaired by USDA's World Agricultural Outlook Board (WAOB). The committee consist of representatives from Foreign Agricultural Service (FAS), the Economic Research Service (ERS), the Farm Service Agency (FSA), and the Agricultural Marketing Service (AMS).

EU Countries and Russia Wheat: Area and Production Estimates

<https://apps.fas.usda.gov/psdonline/app/index.html#/app/downloads> (click on PSD Datasets)

USDA's Foreign Agricultural Service (FAS) provides country-level area and production estimates for the nations of the European Union. For Russia, country-level area and production estimates are provided for Winter and Spring wheat. These datasets are reviewed and updated monthly by an interagency committee chaired by USDA's World Agricultural Outlook Board (WAOB) and can be downloaded through PSD datasets on PSD Online.



FAS Reports and Databases:

International Production Assessment (IPAD)

<https://ipad.fas.usda.gov/>

USDA's Foreign Agricultural Service (FAS) maintains a dynamic global crop production portal with key information including *World Agricultural Production* (WAP) briefs, Commodity Intelligence Reports (CIR), geospatial applications, crop production maps at a subnational level and crop calendars for the top-20 producing countries. Additionally, Crop Explorer (<https://ipad.fas.usda.gov/cropexplorer/>) displays rainfall, temperature, evapotranspiration, soil moisture, snow cover, and vegetation conditions in charts and maps.

USDA and NASA Global Agricultural Monitoring (GLAM)

<https://glam1.gsfc.nasa.gov/>

The USDA and NASA Global Agricultural Monitoring (GLAM) system provides near real-time and science quality Moderate Resolution Imaging Spectroradiometer (MODIS) Normalized Difference Vegetation Index (NDVI) from the satellites Terra and Aqua. The public can view and retrieve MODIS 8-day composited, global NDVI satellite imagery and time series data. GLAM was developed by NASA's Global Inventory Modeling and Mapping Studies (GIMMS) group for USDA's Foreign Agricultural Service.

Global Agricultural and Disaster Assessment System (GADAS)

<https://geo.fas.usda.gov/GADAS/index.html>

USDA's Foreign Agricultural Service (FAS) provides the Global Agricultural and Disaster Assessment System (GADAS), a web-based Geographic Information System (GIS) tool which integrates a vast array of highly detailed earth observation data streams, particularly targeted towards agricultural and disaster assessment analysis. GADAS is an interactive website which provides analysts with a wide variety of routine geospatial products (maps, charts, tables) they require for comprehensive situational investigations and recurring assessments.

Export Sales Reporting

<https://apps.fas.usda.gov/esrquery/>

USDA's Export Sales Reporting Program monitors U.S. agricultural export sales on a daily and weekly basis. Export sales reporting provides a constant stream of up-to-date market information for 40 U.S. agricultural commodities sold abroad. The weekly U.S. Export Sales report is the most currently available source of U.S. exports sales data. The data is used to analyze overall levels of export demand, determine where markets exit, and assess the relative position of U.S. commodities in foreign markets.

Global Agricultural Trade System (GATS)

<https://apps.fas.usda.gov/gats/default.aspx>

The Global Agricultural Trade System (GATS) is a searchable database containing monthly U.S. Census Bureau trade data organized by agricultural commodity and agricultural related product groups. Trade data is searchable by partner countries and partner groups. Historical U.S. agricultural trade data is available back to 1967. In addition, U.N. trade statistics (UN Comtrade) may be queried through GATS. UN trade data is available for nearly 200 countries or areas, dating from the inception of the Harmonized System (HS) of trade codes in 1989 to present. The database is continuously updated. U.S. trade data is updated monthly according to the U.S. Census Bureau's reporting system. UN Comtrade data are updated in GATS after nationally submitted data to the UN are standardized by the UN Statistical Division and added to the UN Comtrade database.

Other USDA Reports:

World Agricultural Supply and Demand Estimates (WASDE):

<http://www.usda.gov/oce/commodity/wasde/>

Economic Research Service:

<http://www.ers.usda.gov/topics/crops>

National Agricultural Statistics Service:

<http://www.nass.usda.gov/Publications/>

Table 01 World Crop Production Summary

Million Metric Tons

Commodity	World	Total Foreign	North America			Former Soviet		European	Asia (WAP)					South America		Selected Other			All Others
			United States	Canada	Mexico	Russia	Ukraine		China	India	Indonesia	Pakistan	Thailand	Argentina	Brazil	Australia	South Africa	Turkey	
---Million metric tons---																			
Wheat																			
2020/21	774.5	724.8	49.8	35.4	3.0	85.4	25.4	nr	134.3	107.9	0.0	25.2	0.0	17.6	6.3	31.9	2.1	18.3	232.1
2021/22 prel.	779.9	735.1	44.8	22.3	3.3	75.2	33.0	nr	136.9	109.6	0.0	27.5	0.0	22.5	7.7	36.3	2.3	16.0	242.6
2022/23 proj.																			
Aug	779.6	731.1	48.5	35.0	3.3	88.0	19.5	nr	138.0	103.0	0.0	26.4	0.0	19.0	8.7	33.0	2.3	17.3	237.7
Sep	783.9	735.4	48.5	35.0	3.6	91.0	20.5	nr	138.0	103.0	0.0	26.4	0.0	19.0	8.7	33.0	2.3	17.3	237.7
Coarse Grains																			
2020/21	1,441.1	1,068.2	372.9	29.6	32.7	41.4	39.6	nr	269.1	51.4	12.6	9.3	5.6	60.0	90.3	18.6	17.8	15.8	374.5
2021/22 prel.	1,506.0	1,107.3	398.7	24.4	32.8	38.5	53.5	nr	280.9	51.2	12.7	11.0	5.4	62.7	120.6	18.8	16.9	11.6	366.5
2022/23 proj.																			
Aug	1,469.5	1,093.0	376.5	29.3	33.5	41.0	37.5	nr	279.3	50.5	12.9	9.4	5.5	64.9	130.5	15.2	17.9	14.2	351.4
Sep	1,463.6	1,098.5	365.1	29.7	33.5	42.0	39.0	nr	282.3	50.5	12.9	9.4	5.4	64.9	130.5	16.7	17.9	14.2	349.7
Rice, Milled																			
2020/21	509.3	502.0	7.2	0.0	0.2	0.7	0.0	nr	148.3	124.4	34.5	8.4	18.9	0.8	8.0	0.3	0.0	0.6	156.9
2021/22 prel.	515.1	509.0	6.1	0.0	0.2	0.7	0.0	nr	149.0	130.3	34.4	9.3	19.7	0.8	7.3	0.5	0.0	0.5	156.3
2022/23 proj.																			
Aug	512.4	506.9	5.6	0.0	0.2	0.7	0.0	nr	149.0	128.5	34.6	8.9	19.8	0.8	7.1	0.6	0.0	0.6	156.1
Sep	508.0	502.7	5.2	0.0	0.2	0.7	0.0	nr	147.0	126.5	34.6	8.4	19.8	0.8	7.1	0.5	0.0	0.6	156.5
Total Grains																			
2020/21	2,724.9	2,295.0	429.9	65.1	35.8	127.5	65.0	nr	551.6	283.6	47.1	43.0	24.4	78.5	104.6	50.8	19.9	34.6	763.4
2021/22 prel.	2,801.0	2,351.4	449.6	46.7	36.2	114.4	86.6	nr	566.8	291.1	47.1	47.8	25.0	85.9	135.7	55.6	19.1	28.1	765.4
2022/23 proj.																			
Aug	2,761.5	2,330.9	430.6	64.3	37.0	129.7	57.0	nr	566.3	282.0	47.5	44.7	25.3	84.7	146.3	48.8	20.2	32.0	745.2
Sep	2,755.5	2,336.7	418.9	64.7	37.3	133.7	59.5	nr	567.3	280.0	47.5	44.2	25.2	84.7	146.3	50.2	20.1	32.0	744.0
Oilseeds																			
2020/21	607.2	482.7	124.5	25.9	0.7	20.1	19.9	nr	65.6	38.3	14.6	2.5	1.0	51.2	143.9	5.7	2.7	2.9	87.7
2021/22 prel.	602.2	471.6	130.5	20.1	0.9	23.1	24.3	nr	62.9	41.1	15.1	3.2	1.0	49.0	130.7	8.6	3.1	3.4	85.1
2022/23 proj.																			
Aug	646.0	513.5	132.5	26.1	0.9	26.4	15.6	nr	65.0	41.8	15.2	3.4	1.0	56.8	154.3	7.8	2.9	3.8	92.6
Sep	644.8	516.3	128.5	26.5	0.9	26.4	17.2	nr	65.2	41.9	15.2	3.1	1.0	56.8	154.3	8.6	2.9	3.8	92.7
Cotton																			
2020/21	111.4	96.8	14.6	0.0	1.0	0.0	0.0	1.7	29.5	27.6	0.0	4.5	0.0	1.4	10.8	2.8	0.1	2.9	14.5
2021/22 prel.	115.7	98.2	17.5	0.0	1.2	0.0	0.0	1.6	27.0	24.5	0.0	6.0	0.0	1.5	11.5	5.8	0.1	3.8	15.3
2022/23 proj.																			
Aug	117.0	104.4	12.6	0.0	1.3	0.0	0.0	1.6	27.5	27.5	0.0	6.2	0.0	1.4	13.0	5.5	0.1	4.3	16.1
Sep	118.4	104.6	13.8	0.0	1.4	0.0	0.0	1.6	28.0	27.5	0.0	5.5	0.0	1.4	13.0	6.0	0.1	4.4	15.8

1/ Includes wheat, coarse grains, and rice (milled) shown above.

Table 02 Wheat Area, Yield, and Production

Country / Region	Area (Million hectares)				Yield (Metric tons per hectare)				Production (Million metric tons)				Change in Production			
	2020/21	Prel.	2022/23 Proj.		2020/21	Prel.	2022/23 Proj.		2020/21	Prel.	2022/23 Proj.		From last month		From last year	
		2021/22	Aug	Sep		2021/22	Aug	Sep		2021/22	Aug	Sep	MMT	Percent	MMT	Percent
World	220.51	222.17	221.63	221.44	3.51	3.51	3.52	3.54	774.53	779.90	779.60	783.92	4.32	0.55	4.02	0.51
United States	14.89	15.04	15.19	15.19	3.34	2.98	3.20	3.20	49.75	44.79	48.52	48.52	0.00	0.00	3.73	8.33
Total Foreign	205.62	207.13	206.44	206.25	3.52	3.55	3.54	3.57	724.78	735.11	731.08	735.40	4.32	0.59	0.28	0.04
European Union	22.97	24.25	24.00	24.00	5.52	5.70	5.50	5.50	126.69	138.29	132.10	132.10	0.00	0.00	-6.19	-4.48
United Kingdom	1.39	1.79	1.80	1.80	6.96	7.81	8.11	8.11	9.66	13.99	14.60	14.60	0.00	0.00	0.61	4.38
Serbia	0.59	0.60	0.63	0.63	4.58	5.00	4.60	4.60	2.70	3.00	2.90	2.90	0.00	0.00	-0.10	-3.33
China	23.38	23.57	23.60	23.60	5.74	5.81	5.85	5.85	134.25	136.95	138.00	138.00	0.00	0.00	1.05	0.77
South Asia																
India	31.36	31.13	30.54	30.54	3.44	3.52	3.37	3.37	107.86	109.59	103.00	103.00	0.00	0.00	-6.59	-6.01
Pakistan	8.81	9.17	9.00	9.00	2.87	3.00	2.93	2.93	25.25	27.46	26.40	26.40	0.00	0.00	-1.06	-3.87
Afghanistan	2.33	2.20	2.20	2.20	2.15	2.00	2.05	2.05	5.01	4.40	4.50	4.50	0.00	0.00	0.10	2.27
Nepal	0.71	0.72	0.72	0.72	2.99	2.90	2.92	2.92	2.13	2.08	2.10	2.10	0.00	0.00	0.03	1.20
Former Soviet Union - 12																
Russia	28.68	27.63	28.70	28.70	2.98	2.72	3.07	3.17	85.35	75.16	88.00	91.00	3.00	3.41	15.84	21.08
Russia Winter	16.63	15.22	16.30	16.30	3.77	3.43	3.99	4.17	62.69	52.19	65.00	68.00	3.00	4.62	15.81	30.28
Russia Spring	12.06	12.41	12.40	12.40	1.88	1.85	1.85	1.85	22.66	22.96	23.00	23.00	0.00	0.00	0.04	0.16
Ukraine	6.85	7.41	5.25	5.25	3.71	4.45	3.71	3.90	25.42	33.01	19.50	20.50	1.00	5.13	-12.51	-37.89
Kazakhstan	12.06	12.72	12.75	12.75	1.18	0.93	1.02	1.02	14.26	11.81	13.00	13.00	0.00	0.00	1.19	10.04
Uzbekistan	1.36	1.36	1.40	1.40	4.53	4.43	4.71	4.71	6.16	6.03	6.60	6.60	0.00	0.00	0.57	9.51
Belarus	0.72	0.65	0.68	0.68	3.94	3.54	3.48	3.48	2.85	2.30	2.35	2.35	0.00	0.00	0.05	2.17
Canada	10.02	9.19	10.00	10.00	3.54	2.43	3.50	3.50	35.44	22.30	35.00	35.00	0.00	0.00	12.70	56.98
South America																
Argentina	6.40	6.55	6.10	6.10	2.76	3.44	3.11	3.11	17.64	22.50	19.00	19.00	0.00	0.00	-3.50	-15.56
Brazil	2.34	2.74	3.20	3.20	2.67	2.81	2.72	2.72	6.25	7.70	8.70	8.70	0.00	0.00	1.00	12.99
Australia	12.64	13.04	13.20	13.10	2.52	2.79	2.50	2.52	31.92	36.35	33.00	33.00	0.00	0.00	-3.35	-9.21
Africa																
Egypt	1.39	1.40	1.53	1.53	6.40	6.43	6.41	6.41	8.90	9.00	9.80	9.80	0.00	0.00	0.80	8.89
Morocco	2.76	2.86	2.50	2.50	0.93	2.64	0.90	1.08	2.56	7.54	2.25	2.70	0.45	20.00	-4.84	-64.19
Algeria	2.08	2.08	2.08	2.08	1.50	1.20	1.78	1.78	3.11	2.50	3.70	3.70	0.00	0.00	1.20	48.00
Ethiopia	1.83	1.95	2.00	2.00	3.00	2.83	2.85	2.85	5.48	5.52	5.70	5.70	0.00	0.00	0.18	3.26
Middle East																
Turkey	7.10	7.05	6.80	6.80	2.57	2.27	2.54	2.54	18.25	16.00	17.25	17.25	0.00	0.00	1.25	7.81
Iran	6.00	6.00	6.20	6.20	2.50	2.00	2.13	2.13	15.00	12.00	13.20	13.20	0.00	0.00	1.20	10.00
Iraq	2.40	2.00	2.00	2.00	1.93	1.75	1.50	1.50	4.64	3.50	3.00	3.00	0.00	0.00	-0.50	-14.29
Syria	1.60	1.10	1.30	1.20	2.81	1.82	1.92	1.75	4.50	2.00	2.50	2.10	-0.40	-16.00	0.10	5.00
Mexico	0.56	0.55	0.59	0.59	5.33	6.00	5.59	6.05	2.97	3.28	3.27	3.57	0.30	9.17	0.29	8.81
Others	7.32	7.45	7.69	7.69	2.81	2.80	2.82	2.81	20.56	20.88	21.66	21.63	-0.03	-0.14	0.75	3.59

Table 03 Total Coarse Grain Area, Yield, and Production

Country / Region	Area (Million hectares)				Yield (Metric tons per hectare)				Production (Million metric tons)				Change in Production						
	2020/21	Prel.		2022/23 Proj.		2020/21	Prel.		2022/23 Proj.		2020/21	Prel.		2022/23 Proj.		From last month		From last year	
		2021/22	Aug	Sep	2021/22		Aug	Sep	2021/22	Aug		Sep	MMT	Percent	MMT	Percent			
World	344.76	345.51	340.61	339.95	4.18	4.36	4.31	4.31	1,441.10	1,506.03	1,469.49	1,463.62	-5.87	-0.40	-42.41	-2.82			
United States	36.81	38.35	36.72	36.36	10.13	10.40	10.25	10.04	372.89	398.71	376.49	365.09	-11.40	-3.03	-33.61	-8.43			
Total Foreign	307.95	307.16	303.89	303.59	3.47	3.61	3.60	3.62	1,068.22	1,107.32	1,092.99	1,098.53	5.53	0.51	-8.80	-0.79			
China	43.72	45.77	45.45	45.45	6.15	6.14	6.15	6.21	269.08	280.85	279.30	282.30	3.00	1.07	1.45	0.52			
European Union	28.77	27.77	27.74	27.67	5.40	5.56	5.07	5.04	155.46	154.41	140.61	139.41	-1.20	-0.85	-15.00	-9.72			
United Kingdom	1.66	1.43	1.37	1.37	5.64	5.88	6.10	6.10	9.36	8.41	8.35	8.35	0.00	0.00	-0.06	-0.73			
South America																			
Brazil	21.30	23.37	24.31	24.31	4.24	5.16	5.37	5.37	90.32	120.62	130.54	130.54	0.00	0.00	9.92	8.22			
Argentina	8.65	9.94	9.59	9.60	6.94	6.30	6.77	6.76	60.01	62.66	64.91	64.91	0.00	0.01	2.26	3.60			
Former Soviet Union - 12																			
Russia	14.55	14.01	13.40	13.40	2.84	2.75	3.06	3.13	41.40	38.54	41.00	42.00	1.00	2.44	3.46	8.98			
Ukraine	8.53	8.66	6.87	6.87	4.64	6.18	5.46	5.68	39.59	53.51	37.46	38.96	1.50	4.00	-14.55	-27.20			
Kazakhstan	3.20	2.63	2.61	2.61	1.54	1.43	1.57	1.57	4.93	3.76	4.10	4.10	0.00	0.00	0.34	9.05			
Belarus	1.14	0.99	1.03	1.03	3.47	3.05	3.11	3.11	3.95	3.00	3.20	3.20	0.00	0.00	0.20	6.67			
Africa																			
Nigeria	13.10	13.70	13.95	13.95	1.60	1.56	1.54	1.54	20.90	21.39	21.50	21.50	0.00	0.00	0.11	0.50			
South Africa	3.36	3.19	3.30	3.29	5.31	5.29	5.43	5.43	17.81	16.86	17.90	17.87	-0.03	-0.17	1.02	6.03			
Tanzania	5.17	5.40	5.00	5.00	1.51	1.49	1.40	1.40	7.79	8.05	6.98	6.98	0.00	0.00	-1.08	-13.35			
Burkina Faso	4.18	4.24	4.24	4.24	1.13	0.99	1.16	1.16	4.72	4.20	4.90	4.90	0.00	0.00	0.70	16.58			
Ethiopia	5.53	5.59	5.63	5.63	3.45	3.08	3.23	3.23	19.10	17.20	18.20	18.20	0.00	0.00	1.00	5.81			
Egypt	1.03	1.16	1.16	1.16	7.01	7.13	7.13	7.13	7.24	8.30	8.30	8.30	0.00	0.00	0.00	0.00			
Mali	5.17	4.70	4.70	4.70	1.41	1.34	1.38	1.38	7.26	6.31	6.50	6.50	0.00	0.00	0.19	2.95			
India	24.12	24.29	24.34	24.34	2.13	2.11	2.07	2.07	51.39	51.21	50.50	50.50	0.00	0.00	-0.71	-1.38			
Southeast Asia																			
Indonesia	3.85	3.90	3.95	3.95	3.27	3.26	3.27	3.27	12.60	12.70	12.90	12.90	0.00	0.00	0.20	1.57			
Philippines	2.57	2.56	2.65	2.65	3.25	3.26	3.13	3.13	8.35	8.34	8.30	8.30	0.00	0.00	-0.04	-0.53			
Vietnam	0.99	0.99	0.97	0.97	4.80	4.86	4.85	4.85	4.74	4.80	4.70	4.70	0.00	0.00	-0.10	-2.04			
Thailand	1.28	1.23	1.25	1.23	4.33	4.36	4.37	4.36	5.55	5.35	5.45	5.35	-0.10	-1.83	0.00	0.00			
Mexico	8.76	8.89	9.01	9.01	3.73	3.69	3.72	3.72	32.66	32.77	33.50	33.50	0.00	0.00	0.72	2.21			
Canada	5.80	5.81	5.54	5.58	5.11	4.21	5.30	5.32	29.64	24.43	29.35	29.70	0.35	1.19	5.27	21.57			
Australia	7.26	6.03	5.74	5.88	2.56	3.11	2.65	2.84	18.56	18.76	15.22	16.67	1.45	9.53	-2.09	-11.13			
Middle East																			
Turkey	4.63	4.46	4.54	4.54	3.40	2.60	3.12	3.12	15.76	11.58	14.17	14.17	0.00	0.00	2.59	22.36			
Iran	1.81	1.91	1.86	1.86	2.77	2.16	2.38	2.38	5.02	4.12	4.42	4.42	0.00	0.00	0.30	7.31			
Others	77.83	74.56	73.72	73.33	1.61	1.68	1.64	1.64	125.05	125.21	120.77	120.33	-0.44	-0.37	-4.88	-3.90			

World and Selected Countries and Regions; Coarse Grain includes: Barley, Corn, Millet, Mixed Grains, Oats, Rye and Sorghum

Table 04 Corn Area, Yield, and Production

Country / Region	Area (Million hectares)				Yield (Metric tons per hectare)				Production (Million metric tons)				Change in Production			
	Prel.		2022/23 Proj.		Prel.		2022/23 Proj.		Prel.		2022/23 Proj.		From last month		From last year	
	2020/21	2021/22	Aug	Sep	2020/21	2021/22	Aug	Sep	2020/21	2021/22	Aug	Sep	MMT	Percent	MMT	Percent
World	199.07	207.08	203.64	203.16	5.67	5.89	5.79	5.77	1,129.29	1,219.76	1,179.61	1,172.58	-7.03	-0.60	-47.18	-3.87
United States	33.31	34.56	33.12	32.72	10.76	11.11	11.01	10.83	358.45	383.94	364.73	354.19	-10.54	-2.89	-29.75	-7.75
Total Foreign	165.76	172.53	170.52	170.44	4.65	4.84	4.78	4.80	770.85	835.81	814.88	818.39	3.51	0.43	-17.42	-2.08
China	41.26	43.32	43.00	43.00	6.32	6.29	6.30	6.37	260.67	272.55	271.00	274.00	3.00	1.11	1.45	0.53
South America																
Brazil	19.90	21.80	22.70	22.70	4.37	5.32	5.55	5.55	87.00	116.00	126.00	126.00	0.00	0.00	10.00	8.62
Argentina	6.55	7.20	7.00	7.00	7.94	7.36	7.86	7.86	52.00	53.00	55.00	55.00	0.00	0.00	2.00	3.77
Bolivia	0.41	0.44	0.44	0.44	3.00	2.60	2.64	2.64	1.23	1.13	1.15	1.15	0.00	0.00	0.02	1.77
European Union	9.24	9.24	9.00	9.00	7.30	7.69	6.67	6.53	67.44	70.98	60.00	58.80	-1.20	-2.00	-12.18	-17.16
Africa																
South Africa	3.12	3.00	3.10	3.10	5.44	5.43	5.58	5.58	16.95	16.30	17.30	17.30	0.00	0.00	1.00	6.13
Nigeria	5.50	6.00	6.25	6.25	2.25	2.12	2.00	2.00	12.40	12.75	12.50	12.50	0.00	0.00	-0.25	-1.92
Ethiopia	2.36	2.53	2.55	2.55	4.47	3.72	4.00	4.00	10.56	9.40	10.20	10.20	0.00	0.00	0.80	8.51
Egypt	0.80	0.93	0.93	0.93	8.00	8.00	8.00	8.00	6.40	7.44	7.44	7.44	0.00	0.00	0.00	0.00
Tanzania	4.20	4.40	4.00	4.00	1.60	1.59	1.48	1.48	6.71	7.00	5.90	5.90	0.00	0.00	-1.10	-15.71
Malawi	1.76	1.75	1.75	1.75	2.10	2.62	2.12	2.12	3.69	4.58	3.72	3.72	0.00	0.00	-0.86	-18.86
Zambia	1.33	1.41	1.12	1.12	2.54	2.57	2.43	2.43	3.39	3.62	2.71	2.71	0.00	0.00	-0.91	-25.25
Kenya	2.19	1.95	1.90	1.90	1.73	1.59	1.58	1.58	3.79	3.10	3.00	3.00	0.00	0.00	-0.10	-3.23
Uganda	0.99	1.10	1.10	1.10	2.78	2.55	2.55	2.55	2.75	2.80	2.80	2.80	0.00	0.00	0.00	0.00
Zimbabwe	1.58	1.95	1.90	1.90	0.57	1.39	0.82	0.82	0.91	2.72	1.56	1.56	0.00	0.00	-1.16	-42.66
Former Soviet Union - 12																
Ukraine	5.40	5.49	4.50	4.50	5.62	7.68	6.67	7.00	30.30	42.13	30.00	31.50	1.50	5.00	-10.63	-25.22
Russia	2.73	2.90	2.70	2.70	5.08	5.25	5.56	5.56	13.87	15.23	15.00	15.00	0.00	0.00	-0.23	-1.48
South Asia																
India	9.89	10.10	9.80	9.80	3.20	3.33	3.21	3.21	31.65	33.60	31.50	31.50	0.00	0.00	-2.10	-6.25
Pakistan	1.42	1.65	1.50	1.50	6.30	6.43	5.93	5.93	8.94	10.64	8.90	8.90	0.00	0.00	-1.74	-16.31
Nepal	0.97	0.97	0.97	0.97	2.82	2.82	2.82	2.82	2.72	2.72	2.72	2.72	0.00	0.00	0.00	0.00
Southeast Asia																
Indonesia	3.85	3.90	3.95	3.95	3.27	3.26	3.27	3.27	12.60	12.70	12.90	12.90	0.00	0.00	0.20	1.57
Philippines	2.57	2.56	2.65	2.65	3.25	3.26	3.13	3.13	8.35	8.34	8.30	8.30	0.00	0.00	-0.04	-0.53
Vietnam	0.99	0.99	0.97	0.97	4.80	4.86	4.85	4.85	4.74	4.80	4.70	4.70	0.00	0.00	-0.10	-2.04
Thailand	1.26	1.20	1.22	1.20	4.38	4.42	4.43	4.42	5.50	5.30	5.40	5.30	-0.10	-1.85	0.00	0.00
Mexico	7.14	7.10	7.20	7.20	3.83	3.77	3.83	3.83	27.35	26.75	27.60	27.60	0.00	0.00	0.85	3.18
Canada	1.41	1.39	1.40	1.45	9.63	10.05	10.00	10.00	13.56	13.98	14.00	14.50	0.50	3.57	0.52	3.69
Turkey	0.62	0.54	0.53	0.53	11.45	12.04	11.81	11.81	7.10	6.50	6.20	6.20	0.00	0.00	-0.30	-4.62
Others	26.32	26.73	26.41	26.30	2.59	2.61	2.55	2.56	68.29	69.77	67.39	67.20	-0.19	-0.28	-2.57	-3.68

World and Selected Countries and Regions

Table 05 Barley Area, Yield, and Production

Country / Region	Area (Million hectares)				Yield (Metric tons per hectare)				Production (Million metric tons)				Change in Production			
	Prel.		2022/23 Proj.		Prel.		2022/23 Proj.		Prel.		2022/23 Proj.		From last month		From last year	
	2020/21	2021/22	Aug	Sep	2020/21	2021/22	Aug	Sep	2020/21	2021/22	Aug	Sep	MMT	Percent	MMT	Percent
World	52.47	48.63	47.59	47.30	3.07	2.99	3.08	3.12	160.86	145.40	146.36	147.72	1.37	0.93	2.32	1.60
United States	0.90	0.79	0.96	0.96	4.15	3.25	3.57	3.57	3.72	2.56	3.44	3.44	0.00	0.00	0.88	34.15
Total Foreign	51.57	47.84	46.62	46.33	3.05	2.99	3.07	3.11	157.14	142.84	142.92	144.29	1.37	0.96	1.45	1.01
European Union	11.05	10.31	10.60	10.53	4.91	5.05	4.73	4.76	54.23	52.05	50.10	50.10	0.00	0.00	-1.95	-3.74
United Kingdom	1.39	1.15	1.12	1.12	5.85	6.05	6.32	6.32	8.12	6.96	7.05	7.05	0.00	0.00	0.09	1.28
Former Soviet Union - 12																
Russia	8.16	7.69	7.60	7.60	2.53	2.28	2.63	2.76	20.63	17.51	20.00	21.00	1.00	5.00	3.50	19.97
Ukraine	2.58	2.68	1.90	1.90	3.08	3.70	3.37	3.37	7.95	9.92	6.40	6.40	0.00	0.00	-3.52	-35.50
Kazakhstan	2.73	2.16	2.15	2.15	1.34	1.10	1.26	1.26	3.66	2.37	2.70	2.70	0.00	0.00	0.33	14.07
Belarus	0.41	0.35	0.40	0.40	3.35	2.86	2.75	2.75	1.38	1.00	1.10	1.10	0.00	0.00	0.10	10.00
Azerbaijan	0.35	0.37	0.34	0.34	2.81	2.74	2.79	2.79	0.97	1.00	0.95	0.95	0.00	0.00	-0.05	-5.00
Canada	2.81	3.01	2.60	2.60	3.82	2.31	3.81	3.81	10.74	6.96	9.90	9.90	0.00	0.00	2.94	42.26
Australia	5.49	4.42	4.10	4.20	2.67	3.15	2.80	2.90	14.65	13.91	11.50	12.20	0.70	6.09	-1.71	-12.27
Middle East																
Turkey	3.80	3.70	3.80	3.80	2.13	1.22	1.95	1.95	8.10	4.50	7.40	7.40	0.00	0.00	2.90	64.44
Iran	1.60	1.70	1.65	1.65	2.25	1.59	1.82	1.82	3.60	2.70	3.00	3.00	0.00	0.00	0.30	11.11
Iraq	1.20	0.60	0.60	0.60	1.29	1.17	1.13	1.13	1.55	0.70	0.68	0.68	0.00	0.00	-0.02	-2.86
Syria	1.50	0.80	1.00	0.90	1.27	0.81	0.90	0.78	1.90	0.65	0.90	0.70	-0.20	-22.22	0.05	7.69
Africa																
Ethiopia	0.90	0.96	0.97	0.97	2.52	2.45	2.47	2.47	2.26	2.35	2.40	2.40	0.00	0.00	0.05	2.13
Morocco	1.47	1.49	1.30	1.10	0.44	1.87	0.60	0.64	0.64	2.78	0.78	0.70	-0.08	-10.26	-2.08	-74.82
Algeria	0.98	1.03	1.03	1.03	1.24	0.93	1.56	1.56	1.21	0.95	1.60	1.60	0.00	0.00	0.65	68.42
Tunisia	0.36	0.28	0.30	0.30	1.28	1.54	1.40	1.40	0.47	0.43	0.42	0.42	0.00	0.00	-0.01	-2.33
South Africa	0.14	0.10	0.11	0.10	4.14	3.52	3.64	3.70	0.59	0.33	0.40	0.37	-0.03	-7.50	0.04	10.78
South America																
Argentina	1.01	1.34	1.35	1.35	4.00	3.96	3.93	3.93	4.04	5.30	5.30	5.30	0.00	0.00	0.00	0.00
Uruguay	0.19	0.22	0.23	0.23	4.78	4.11	4.16	4.16	0.89	0.92	0.94	0.94	0.00	0.00	0.02	1.63
Brazil	0.10	0.11	0.11	0.11	3.63	3.79	3.91	3.91	0.37	0.43	0.43	0.43	0.00	0.00	0.01	1.18
India	0.59	0.59	0.54	0.54	2.92	2.80	2.59	2.59	1.72	1.66	1.40	1.40	0.00	0.00	-0.26	-15.46
China	0.51	0.51	0.51	0.51	4.00	3.92	3.92	3.92	2.04	2.00	2.00	2.00	0.00	0.00	0.00	0.00
Mexico	0.30	0.35	0.34	0.34	3.07	3.11	2.82	2.82	0.91	1.09	0.96	0.96	0.00	0.00	-0.13	-11.93
Afghanistan	0.17	0.16	0.17	0.17	1.41	1.25	1.35	1.35	0.24	0.20	0.23	0.23	0.00	0.00	0.03	15.00
Others	1.79	1.78	1.82	1.81	2.40	2.35	2.41	2.41	4.31	4.19	4.39	4.36	-0.02	-0.55	0.17	4.16

World and Selected Countries and Regions

Table 06 Oats Area, Yield, and Production

Country / Region	Area (Million hectares)				Yield (Metric tons per hectare)				Production (Million metric tons)				Change in Production			
	2020/21	Prel.	2022/23 Proj.		2020/21	Prel.	2022/23 Proj.		2020/21	Prel.	2022/23 Proj.		From last month		From last year	
		2021/22	Aug	Sep		2021/22	Aug	Sep		2021/22	Aug	Sep	MMT	Percent	MMT	Percent
World	10.08	9.61	9.49	9.42	2.55	2.35	2.56	2.57	25.72	22.54	24.30	24.21	-0.10	-0.39	1.66	7.37
United States	0.41	0.26	0.32	0.32	2.34	2.20	2.37	2.37	0.95	0.58	0.76	0.76	0.00	0.00	0.19	32.01
Total Foreign	9.67	9.35	9.16	9.09	2.56	2.35	2.57	2.58	24.77	21.97	23.54	23.44	-0.10	-0.40	1.48	6.72
European Union	2.56	2.56	2.50	2.50	3.31	2.95	3.04	3.04	8.47	7.53	7.60	7.60	0.00	0.00	0.07	0.96
Former Soviet Union - 12																
Russia	2.33	2.17	2.00	2.00	1.77	1.72	1.90	1.90	4.13	3.73	3.80	3.80	0.00	0.00	0.07	1.79
Ukraine	0.20	0.18	0.18	0.18	2.54	2.61	2.29	2.29	0.52	0.48	0.40	0.40	0.00	0.00	-0.08	-16.32
Belarus	0.16	0.15	0.16	0.16	2.87	2.33	2.42	2.42	0.45	0.35	0.38	0.38	0.00	0.00	0.03	7.14
Kazakhstan	0.23	0.20	0.20	0.20	1.05	0.90	1.13	1.13	0.24	0.18	0.23	0.23	0.00	0.00	0.04	23.63
Canada	1.31	1.18	1.30	1.30	3.48	2.39	3.62	3.54	4.58	2.81	4.70	4.60	-0.10	-2.13	1.79	63.82
South America																
Argentina	0.24	0.35	0.28	0.28	2.13	2.07	2.30	2.30	0.51	0.73	0.65	0.65	0.00	0.00	-0.08	-11.03
Brazil	0.43	0.50	0.51	0.51	2.00	2.27	2.26	2.26	0.85	1.14	1.16	1.16	0.00	0.00	0.01	1.05
Chile	0.11	0.12	0.10	0.13	4.65	4.70	5.10	4.37	0.53	0.58	0.50	0.55	0.06	11.11	-0.03	-4.84
Uruguay	0.02	0.01	0.02	0.02	2.20	2.21	2.40	2.40	0.03	0.03	0.04	0.04	0.00	0.00	0.01	16.13
Oceania																
Australia	1.07	0.85	0.90	0.80	1.77	1.90	1.61	1.75	1.90	1.62	1.45	1.40	-0.05	-3.45	-0.22	-13.53
New Zealand	0.00	0.01	0.01	0.01	5.75	5.80	5.80	5.80	0.02	0.03	0.03	0.03	0.00	0.00	0.00	0.00
China	0.41	0.41	0.41	0.41	1.48	1.48	1.48	1.48	0.60	0.60	0.60	0.60	0.00	0.00	0.00	0.00
Africa																
Algeria	0.06	0.08	0.08	0.08	1.11	1.31	1.31	1.31	0.07	0.11	0.11	0.11	0.00	0.00	0.00	0.00
Morocco	0.02	0.04	0.02	0.02	0.40	1.13	0.40	0.40	0.01	0.05	0.01	0.01	0.00	0.00	-0.04	-86.67
South Africa	0.03	0.04	0.03	0.03	2.19	1.94	1.67	1.67	0.06	0.07	0.05	0.05	0.00	0.00	-0.02	-28.57
Other Europe																
United Kingdom	0.21	0.20	0.19	0.19	4.91	5.62	5.53	5.53	1.03	1.12	1.05	1.05	0.00	0.00	-0.07	-6.50
Norway	0.07	0.07	0.07	0.07	4.29	4.29	4.29	4.29	0.30	0.30	0.30	0.30	0.00	0.00	0.00	0.00
Serbia	0.03	0.03	0.03	0.03	2.17	2.17	2.17	2.17	0.07	0.07	0.07	0.07	0.00	0.00	0.00	0.00
Albania	0.02	0.01	0.02	0.02	2.25	2.14	2.20	2.20	0.04	0.03	0.03	0.03	0.00	0.00	0.00	10.00
Bosnia and Herzegovina	0.01	0.01	0.01	0.01	3.09	2.82	2.82	2.82	0.03	0.03	0.03	0.03	0.00	0.00	0.00	0.00
Turkey	0.10	0.11	0.11	0.11	2.40	2.38	2.38	2.38	0.24	0.25	0.25	0.25	0.00	0.00	0.00	0.00
Mexico	0.03	0.05	0.05	0.05	2.03	2.00	1.89	1.89	0.06	0.09	0.09	0.09	0.00	0.00	-0.01	-7.61
Others	0.03	0.03	0.03	0.03	1.61	1.76	1.68	1.68	0.05	0.05	0.05	0.05	0.00	0.00	0.00	1.96

World and Selected Countries and Regions

Table 07 Rye Area, Yield, and Production

Country / Region	Area (Million hectares)				Yield (Metric tons per hectare)				Production (Million metric tons)				Change in Production			
	Prel.		2022/23 Proj.		Prel.		2022/23 Proj.		Prel.		2022/23 Proj.		From last month		From last year	
	2020/21	2021/22	Aug	Sep	2020/21	2021/22	Aug	Sep	2020/21	2021/22	Aug	Sep	MMT	Percent	MMT	Percent
World	4.17	4.06	3.79	3.78	3.43	3.09	3.19	3.19	14.30	12.54	12.09	12.04	-0.05	-0.41	-0.51	-4.04
United States	0.13	0.12	0.14	0.14	2.19	2.09	2.13	2.13	0.29	0.25	0.30	0.30	0.00	0.00	0.05	19.68
Total Foreign	4.03	3.94	3.65	3.64	3.47	3.12	3.23	3.23	14.01	12.30	11.79	11.74	-0.05	-0.42	-0.56	-4.52
European Union	2.08	1.93	1.90	1.90	4.31	4.12	4.04	4.04	8.97	7.95	7.68	7.68	0.00	0.00	-0.27	-3.37
Former Soviet Union - 12																
Russia	0.97	0.99	0.88	0.88	2.44	1.73	2.17	2.17	2.38	1.72	1.90	1.90	0.00	0.00	0.18	10.72
Belarus	0.36	0.33	0.30	0.30	2.92	2.46	2.50	2.50	1.05	0.80	0.75	0.75	0.00	0.00	-0.05	-6.25
Ukraine	0.14	0.18	0.10	0.10	3.28	3.43	2.85	2.85	0.46	0.60	0.29	0.29	0.00	0.00	-0.32	-52.50
Kazakhstan	0.02	0.04	0.03	0.03	1.25	0.91	1.20	1.20	0.03	0.04	0.03	0.03	0.00	0.00	-0.01	-25.00
Turkey	0.11	0.12	0.11	0.11	2.91	2.87	2.91	2.91	0.32	0.33	0.32	0.32	0.00	0.00	-0.01	-3.03
Canada	0.15	0.15	0.15	0.14	3.19	3.22	3.33	3.21	0.49	0.47	0.50	0.45	-0.05	-10.00	-0.02	-4.86
South America																
Chile	0.00	0.00	0.00	0.00	5.00	5.00	5.00	5.00	0.01	0.01	0.01	0.01	0.00	0.00	0.00	0.00
Argentina	0.09	0.12	0.09	0.09	1.50	1.88	1.84	1.84	0.14	0.23	0.16	0.16	0.00	0.00	-0.07	-28.89
Other Europe																
Bosnia and Herzegovina	0.00	0.00	0.00	0.00	3.67	3.00	2.75	2.75	0.01	0.01	0.01	0.01	0.00	0.00	0.00	22.22
Switzerland	0.00	0.00	0.00	0.00	5.50	5.50	5.50	5.50	0.01	0.01	0.01	0.01	0.00	0.00	0.00	0.00
Serbia	0.00	0.00	0.00	0.00	2.50	2.50	2.50	2.50	0.01	0.01	0.01	0.01	0.00	0.00	0.00	0.00
Australia	0.05	0.05	0.05	0.05	0.71	0.71	0.71	0.71	0.03	0.03	0.03	0.03	0.00	0.00	0.00	0.00
Others	0.04	0.04	0.04	0.04	2.50	2.18	2.16	2.16	0.11	0.10	0.10	0.10	0.00	0.00	0.00	-1.04

World and Selected Countries and Regions

Table 08 Sorghum Area, Yield, and Production

Country / Region	Area (Million hectares)				Yield (Metric tons per hectare)				Production (Million metric tons)				Change in Production			
	Prel.		2022/23 Proj.		Prel.		2022/23 Proj.		Prel.		2022/23 Proj.		From last month		From last year	
	2020/21	2021/22	Aug	Sep	2020/21	2021/22	Aug	Sep	2020/21	2021/22	Aug	Sep	MMT	Percent	MMT	Percent
World	42.96	41.46	41.04	41.22	1.45	1.50	1.47	1.46	62.44	62.10	60.38	60.32	-0.06	-0.11	-1.78	-2.87
United States	2.06	2.63	2.18	2.22	4.59	4.33	3.34	2.89	9.47	11.38	7.27	6.40	-0.86	-11.89	-4.97	-43.70
Total Foreign	40.90	38.84	38.86	39.00	1.30	1.31	1.37	1.38	52.97	50.73	53.12	53.92	0.80	1.51	3.19	6.28
Africa																
Nigeria	5.60	5.70	5.70	5.70	1.18	1.18	1.23	1.23	6.59	6.73	7.00	7.00	0.00	0.00	0.28	4.09
Ethiopia	1.79	1.65	1.66	1.66	2.83	2.70	2.71	2.71	5.06	4.45	4.50	4.50	0.00	0.00	0.05	1.12
Sudan	9.03	6.92	7.00	7.00	0.57	0.51	0.71	0.71	5.15	3.53	5.00	5.00	0.00	0.00	1.47	41.64
Burkina Faso	1.86	1.90	1.90	1.90	0.99	0.87	1.00	1.00	1.84	1.64	1.90	1.90	0.00	0.00	0.26	15.57
Mali	1.83	1.50	1.50	1.50	1.00	0.83	1.00	1.00	1.82	1.24	1.50	1.50	0.00	0.00	0.26	21.07
Niger	3.67	3.70	3.70	3.70	0.58	0.33	0.51	0.51	2.13	1.21	1.90	1.90	0.00	0.00	0.69	57.42
Cameroon	0.74	0.74	0.74	0.74	1.62	1.62	1.62	1.62	1.20	1.20	1.20	1.20	0.00	0.00	0.00	0.00
Tanzania	0.70	0.70	0.70	0.70	1.07	1.02	1.07	1.07	0.75	0.72	0.75	0.75	0.00	0.00	0.04	4.90
Egypt	0.15	0.15	0.15	0.15	4.91	5.00	5.00	5.00	0.73	0.75	0.75	0.75	0.00	0.00	0.00	0.00
Uganda	0.31	0.25	0.25	0.25	0.82	0.80	0.90	0.90	0.25	0.20	0.23	0.23	0.00	0.00	0.03	12.50
Ghana	0.30	0.31	0.31	0.31	1.13	1.11	1.13	1.13	0.35	0.35	0.35	0.35	0.00	0.00	0.01	1.45
Mozambique	0.26	0.25	0.25	0.25	0.54	0.64	0.64	0.64	0.14	0.16	0.16	0.16	0.00	0.00	0.00	0.00
South Africa	0.05	0.04	0.04	0.04	4.39	3.95	3.75	3.75	0.22	0.15	0.15	0.15	0.00	0.00	0.00	0.00
Mexico	1.29	1.40	1.42	1.42	3.37	3.47	3.42	3.42	4.35	4.84	4.85	4.85	0.00	0.00	0.01	0.21
South America																
Argentina	0.75	0.93	0.88	0.88	4.43	3.68	4.34	4.34	3.32	3.40	3.80	3.80	0.00	0.00	0.40	11.76
Brazil	0.87	0.95	0.98	0.98	2.41	3.20	3.00	3.00	2.08	3.04	2.94	2.94	0.00	0.00	-0.10	-3.35
South Asia																
India	4.38	4.60	4.50	4.50	1.10	0.92	0.98	0.98	4.81	4.25	4.40	4.40	0.00	0.00	0.15	3.53
Pakistan	0.13	0.08	0.22	0.22	0.76	0.83	0.63	0.63	0.10	0.06	0.14	0.14	0.00	0.00	0.07	110.94
China	0.64	0.63	0.63	0.63	4.68	4.76	4.76	4.76	2.97	3.00	3.00	3.00	0.00	0.00	0.00	0.00
Australia	0.57	0.62	0.60	0.74	2.86	4.38	3.00	3.51	1.64	2.73	1.80	2.60	0.80	44.44	-0.13	-4.87
European Union	0.19	0.15	0.14	0.14	5.21	5.49	5.18	5.18	1.00	0.82	0.73	0.73	0.00	0.00	-0.10	-11.91
Others	5.80	5.68	5.60	5.60	1.12	1.10	1.09	1.09	6.47	6.26	6.08	6.08	0.00	0.00	-0.18	-2.89

World and Selected Countries and Regions

Table 09 Rice Area, Yield, and Production
World and Selected Countries and Regions

Country / Region	Area (Million hectares)				Yield (Metric tons per hectare)				Production (Million metric tons)				Change in Production			
	Prel.		2022/23 Proj.		Prel.		2022/23 Proj.		Prel.		2022/23 Proj.		From last month		From last year	
	2020/21	2021/22	Aug	Sep	2020/21	2021/22	Aug	Sep	2020/21	2021/22	Aug	Sep	MMT	Percent	MMT	Percent
World	165.21	166.65	165.56	164.75	4.60	4.62	4.62	4.61	509.26	515.08	512.44	507.99	-4.45	-0.87	-7.08	-1.38
United States	1.21	1.01	0.93	0.88	8.54	8.64	8.55	8.50	7.22	6.09	5.59	5.24	-0.35	-6.17	-0.85	-13.89
Total Foreign	164.00	165.65	164.63	163.87	4.57	4.59	4.60	4.58	502.04	508.99	506.85	502.75	-4.10	-0.81	-6.24	-1.23
East Asia																
China	30.08	29.92	30.00	30.00	7.04	7.11	7.10	7.00	148.30	148.99	149.00	147.00	-2.00	-1.34	-1.99	-1.34
Japan	1.53	1.52	1.51	1.51	6.79	6.90	6.87	6.87	7.57	7.64	7.55	7.55	0.00	0.00	-0.09	-1.18
Korea, South	0.73	0.73	0.72	0.73	6.49	7.12	6.90	6.91	3.51	3.88	3.72	3.75	0.03	0.81	-0.13	-3.40
Korea, North	0.49	0.50	0.50	0.50	4.44	4.18	4.18	4.18	1.40	1.36	1.36	1.36	0.00	0.00	0.00	0.00
South Asia																
India	45.77	47.00	46.00	45.50	4.08	4.16	4.19	4.17	124.37	130.29	128.50	126.50	-2.00	-1.56	-3.79	-2.91
Bangladesh	11.50	11.62	11.50	11.50	4.51	4.63	4.65	4.65	34.60	35.85	35.65	35.65	0.00	0.00	-0.20	-0.56
Pakistan	3.34	3.54	3.40	3.20	3.79	3.95	3.93	3.94	8.42	9.32	8.90	8.40	-0.50	-5.62	-0.92	-9.90
Nepal	1.48	1.47	1.48	1.48	3.81	3.80	3.83	3.83	3.74	3.73	3.76	3.76	0.00	0.00	0.03	0.88
Sri Lanka	1.09	1.11	1.10	1.00	4.59	3.49	4.00	3.90	3.39	2.63	3.00	2.65	-0.35	-11.52	0.02	0.76
Southeast Asia																
Indonesia	11.40	11.60	11.65	11.65	4.77	4.67	4.68	4.68	34.50	34.40	34.60	34.60	0.00	0.00	0.20	0.58
Vietnam	7.31	7.29	7.29	7.29	6.00	5.95	6.01	6.01	27.38	27.07	27.40	27.40	0.00	0.00	0.33	1.22
Thailand	10.51	10.59	10.70	10.70	2.72	2.81	2.80	2.80	18.86	19.65	19.80	19.80	0.00	0.00	0.15	0.76
Burma	6.90	6.90	6.90	6.90	2.85	2.80	2.83	2.83	12.60	12.35	12.50	12.50	0.00	0.00	0.15	1.20
Philippines	4.76	4.80	4.80	4.80	4.14	4.15	4.10	4.10	12.42	12.54	12.41	12.41	0.00	0.00	-0.13	-1.03
Cambodia	3.27	3.34	3.35	3.35	2.90	2.88	2.91	2.91	5.78	5.86	5.94	5.94	0.00	0.00	0.08	1.33
Laos	0.93	0.94	0.95	0.95	3.24	3.28	3.26	3.26	1.90	1.95	1.95	1.95	0.00	0.00	0.00	0.00
Malaysia	0.68	0.67	0.68	0.68	4.07	4.09	4.07	4.07	1.80	1.78	1.80	1.80	0.00	0.00	0.02	1.12
South America																
Brazil	1.68	1.62	1.60	1.60	7.00	6.67	6.53	6.53	8.00	7.34	7.10	7.10	0.00	0.00	-0.24	-3.32
Peru	0.41	0.42	0.42	0.42	8.21	8.34	8.55	8.55	2.34	2.40	2.48	2.48	0.00	0.00	0.09	3.72
Africa																
Egypt	0.70	0.50	0.50	0.55	8.28	8.41	8.41	8.83	4.00	2.90	2.90	3.35	0.45	15.52	0.45	15.52
Madagascar	1.68	1.65	1.60	1.60	2.53	2.65	2.38	2.69	2.71	2.80	2.43	2.75	0.32	13.16	-0.05	-1.82
Nigeria	3.60	3.65	3.70	3.70	2.27	2.29	2.30	2.30	5.15	5.26	5.36	5.36	0.00	0.00	0.10	1.90
European Union	0.42	0.40	0.36	0.36	6.74	6.53	5.90	5.90	1.83	1.71	1.35	1.35	0.00	0.00	-0.37	-21.35
Iran	0.58	0.56	0.57	0.57	5.27	5.14	5.32	5.32	2.00	1.90	2.00	2.00	0.00	0.00	0.10	5.26
Others	13.20	13.32	13.36	13.34	2.93	2.89	2.88	2.88	25.48	25.38	25.39	25.34	-0.06	-0.22	-0.04	-0.17

Yield is on a rough basis, before the milling process. Production is on a milled basis, after the milling process.

Table 10 Total Oilseed Area, Yield, and Production

World and Selected Countries and Regions

Country / Region	Area (Million hectares)				Yield (Metric tons per hectare)				Production (Million metric tons)				Change in Production			
	2020/21	Prel.	2022/23 Proj.		2020/21	Prel.	2022/23 Proj.		2020/21	Prel.	2022/23 Proj.		From last month		From last year	
		2021/22	Aug	Sep		2021/22	Aug	Sep		2021/22	Aug	Sep	MMT	Percent	MMT	Percent
World Total	--	--	--	--	--	--	--	--	607.23	602.15	646.00	644.83	-1.17	-0.18	42.68	7.09
Total Foreign	--	--	--	--	--	--	--	--	482.71	471.61	513.54	516.32	2.79	0.54	44.71	9.48
Oilseed, Copra	--	--	--	--	--	--	--	--	5.59	5.86	5.86	5.86	0.00	0.00	0.00	0.00
Oilseed, Palm Kernel	--	--	--	--	--	--	--	--	19.05	20.03	20.59	20.59	0.01	0.04	0.57	2.84
Major Oilseeds	251.29	259.55	263.47	263.73	2.32	2.22	2.35	2.34	582.59	576.27	619.55	618.38	-1.17	-0.19	42.11	7.31
United States	38.81	41.07	40.21	40.24	3.21	3.18	3.29	3.19	124.52	130.54	132.46	128.51	-3.95	-2.98	-2.03	-1.56
Foreign Oilseeds	212.48	218.48	223.26	223.49	2.16	2.04	2.18	2.19	458.07	445.73	487.09	489.87	2.78	0.57	44.14	9.90
South America	65.75	67.61	70.31	70.30	3.21	2.82	3.24	3.24	210.85	190.36	227.68	227.64	-0.04	-0.02	37.28	19.58
Brazil	40.77	42.83	43.85	43.85	3.53	3.05	3.52	3.52	143.77	130.60	154.13	154.13	0.00	0.00	23.53	18.02
Argentina	18.97	18.52	19.83	19.83	2.70	2.65	2.86	2.86	51.21	49.03	56.79	56.80	0.00	0.01	7.77	15.84
Paraguay	3.24	3.39	3.54	3.54	3.09	1.28	2.86	2.86	10.02	4.32	10.13	10.13	0.00	0.00	5.81	134.43
Bolivia	1.57	1.54	1.57	1.57	2.24	2.07	2.10	2.10	3.51	3.20	3.30	3.30	0.00	0.00	0.10	3.22
Uruguay	1.07	1.20	1.38	1.38	1.85	2.39	2.14	2.14	1.98	2.86	2.94	2.94	0.00	0.00	0.08	2.90
China	25.50	24.15	25.40	25.40	2.57	2.60	2.56	2.57	65.58	62.90	64.98	65.17	0.20	0.30	2.27	3.61
South Asia	42.22	41.59	43.42	43.04	0.96	1.06	1.03	1.04	40.51	43.94	44.86	44.58	-0.28	-0.63	0.63	1.44
India	39.15	38.70	40.25	40.08	0.96	1.04	1.02	1.02	37.55	40.29	41.02	41.04	0.02	0.05	0.75	1.86
Pakistan	2.71	2.53	2.80	2.60	0.93	1.27	1.21	1.19	2.53	3.22	3.40	3.10	-0.30	-8.92	-0.12	-3.73
European Union	11.10	10.99	11.89	12.10	2.59	2.79	2.58	2.56	28.77	30.66	30.73	30.96	0.23	0.75	0.30	0.98
United Kingdom	0.38	0.31	0.36	0.36	2.73	3.20	3.40	3.40	1.04	0.98	1.23	1.23	0.00	0.00	0.24	24.87
Former Soviet Union - 12	25.91	27.77	26.39	26.54	1.72	1.89	1.78	1.82	44.70	52.44	46.86	48.38	1.52	3.25	-4.06	-7.73
Russia	12.50	14.23	15.20	15.20	1.61	1.62	1.74	1.74	20.14	23.11	26.40	26.40	0.00	0.00	3.29	14.25
Ukraine	9.65	9.58	7.10	7.25	2.06	2.54	2.20	2.37	19.85	24.32	15.60	17.20	1.60	10.26	-7.12	-29.26
Uzbekistan	1.08	1.08	1.09	1.09	1.19	1.03	1.09	1.02	1.28	1.11	1.19	1.11	-0.08	-6.58	0.00	0.18
Canada	10.41	11.12	10.74	10.73	2.49	1.81	2.43	2.47	25.95	20.11	26.08	26.46	0.38	1.47	6.35	31.58
Africa	22.12	24.79	24.32	24.24	1.08	0.98	1.03	1.03	23.99	24.35	24.94	24.89	-0.05	-0.19	0.54	2.23
Nigeria	4.62	4.97	4.87	4.87	1.19	1.11	1.21	1.21	5.49	5.50	5.90	5.90	0.00	0.00	0.41	7.37
South Africa	1.36	1.66	1.82	1.82	1.98	1.88	1.60	1.60	2.69	3.13	2.91	2.91	0.00	0.00	-0.22	-7.10
Tanzania	1.17	1.24	1.35	1.35	1.02	0.98	0.93	0.93	1.19	1.21	1.25	1.25	0.00	0.00	0.04	3.39
Southeast Asia	3.25	3.21	3.18	3.18	1.36	1.36	1.38	1.38	4.42	4.38	4.37	4.37	0.00	0.00	-0.01	-0.16
Burma	2.03	2.04	2.04	2.04	1.17	1.19	1.21	1.21	2.37	2.42	2.46	2.46	0.00	0.00	0.05	1.86
Indonesia	0.94	0.90	0.87	0.87	1.54	1.55	1.55	1.55	1.45	1.39	1.35	1.35	0.00	0.00	-0.04	-2.53
Australia	2.94	3.87	4.00	4.31	1.93	2.22	1.96	1.99	5.69	8.59	7.83	8.60	0.77	9.77	0.01	0.13
Turkey	1.18	1.32	1.45	1.48	2.46	2.55	2.61	2.58	2.89	3.37	3.78	3.81	0.03	0.85	0.44	13.15
Others	1.70	1.74	1.81	1.82	2.18	2.10	2.08	2.08	3.70	3.65	3.77	3.78	0.02	0.42	0.13	3.53

World Total and Total Foreign: (Major Oilseeds plus copra and palm kernel) Major Oilseeds: (soybeans, sunflowerseeds, peanuts(inshell), cottonseed and rapeseed)

Table 11 Soybean Area, Yield, and Production

Country / Region	Area (Million hectares)				Yield (Metric tons per hectare)				Production (Million metric tons)				Change in Production			
	2020/21	Prel. 2021/22	2022/23 Proj.		2020/21	Prel. 2021/22	2022/23 Proj.		2020/21	Prel. 2021/22	2022/23 Proj.		From last month		From last year	
		Aug	Sep			Aug	Sep			Aug	Sep	MMT	Percent	MMT	Percent	
World	128.66	130.42	134.48	134.56	2.86	2.71	2.92	2.90	368.44	353.24	392.79	389.77	-3.03	-0.77	36.52	10.34
United States	33.43	34.94	35.29	35.06	3.43	3.45	3.49	3.40	114.75	120.71	123.30	119.16	-4.15	-3.36	-1.55	-1.29
Total Foreign	95.23	95.49	99.19	99.50	2.66	2.44	2.72	2.72	253.70	232.54	269.49	270.61	1.12	0.42	38.07	16.37
South America																
Brazil	39.20	41.00	42.00	42.00	3.56	3.07	3.55	3.55	139.50	126.00	149.00	149.00	0.00	0.00	23.00	18.25
Argentina	16.47	16.00	17.00	17.00	2.81	2.75	3.00	3.00	46.20	44.00	51.00	51.00	0.00	0.00	7.00	15.91
Paraguay	3.15	3.30	3.45	3.45	3.14	1.27	2.90	2.90	9.90	4.20	10.00	10.00	0.00	0.00	5.80	138.10
Bolivia	1.43	1.40	1.43	1.43	2.32	2.14	2.17	2.17	3.32	3.00	3.10	3.10	0.00	0.00	0.10	3.33
Uruguay	0.91	0.98	1.10	1.10	1.88	2.53	2.27	2.27	1.71	2.47	2.50	2.50	0.00	0.00	0.03	1.21
East Asia																
China	9.88	8.40	9.35	9.35	1.98	1.95	1.97	1.97	19.60	16.40	18.40	18.40	0.00	0.00	2.00	12.20
Korea, South	0.06	0.06	0.06	0.06	1.47	1.71	1.73	1.73	0.08	0.09	0.10	0.10	0.00	0.00	0.00	1.06
Korea, North	0.16	0.17	0.17	0.17	1.40	1.44	1.44	1.44	0.23	0.24	0.24	0.24	0.00	0.00	0.00	0.00
Japan	0.14	0.15	0.15	0.15	1.54	1.63	1.55	1.55	0.22	0.24	0.23	0.23	0.00	0.00	-0.01	-2.52
India	12.92	12.50	12.70	12.70	0.81	0.95	0.91	0.91	10.45	11.90	11.50	11.50	0.00	0.00	-0.40	-3.36
Canada	2.04	2.13	2.10	2.10	3.12	2.94	2.86	3.05	6.36	6.27	6.00	6.40	0.40	6.67	0.13	2.04
Former Soviet Union - 12																
Russia	2.71	2.99	3.30	3.30	1.59	1.59	1.67	1.67	4.31	4.76	5.50	5.50	0.00	0.00	0.74	15.55
Ukraine	1.46	1.44	1.20	1.50	2.05	2.64	2.33	2.33	3.00	3.80	2.80	3.50	0.70	25.00	-0.30	-7.89
European Union	1.00	0.98	1.04	1.06	2.61	2.76	2.48	2.46	2.60	2.71	2.57	2.60	0.03	1.17	-0.11	-3.88
Southeast Asia																
Indonesia	0.39	0.35	0.33	0.33	1.22	1.21	1.21	1.21	0.48	0.43	0.40	0.40	0.00	0.00	-0.03	-5.88
Vietnam	0.04	0.03	0.03	0.03	1.61	1.61	1.60	1.60	0.06	0.05	0.05	0.05	0.00	0.00	-0.01	-9.43
Thailand	0.03	0.03	0.03	0.03	1.63	1.63	1.63	1.63	0.05	0.05	0.05	0.05	0.00	0.00	0.00	0.00
Burma	0.14	0.13	0.13	0.13	1.04	1.04	1.04	1.04	0.14	0.14	0.13	0.13	0.00	0.00	-0.01	-3.70
Serbia	0.22	0.22	0.22	0.22	2.89	2.45	2.50	2.50	0.64	0.54	0.55	0.55	0.00	0.00	0.01	1.85
Mexico	0.16	0.19	0.19	0.19	1.58	1.57	1.58	1.57	0.25	0.29	0.30	0.29	-0.01	-3.33	0.00	0.00
Africa																
South Africa	0.83	0.93	1.00	1.00	2.29	2.35	2.00	2.00	1.90	2.18	2.00	2.00	0.00	0.00	-0.18	-8.05
Nigeria	1.10	1.20	1.20	1.20	1.01	0.93	1.04	1.04	1.11	1.12	1.25	1.25	0.00	0.00	0.13	11.91
Zambia	0.16	0.30	0.38	0.38	1.81	1.35	1.27	1.27	0.30	0.41	0.48	0.48	0.00	0.00	0.06	15.57
Uganda	0.05	0.05	0.05	0.05	0.60	0.60	0.60	0.60	0.03	0.03	0.03	0.03	0.00	0.00	0.00	0.00
Middle East																
Iran	0.07	0.07	0.08	0.08	2.41	2.29	2.27	2.27	0.17	0.16	0.17	0.17	0.00	0.00	0.01	6.25
Turkey	0.03	0.03	0.04	0.04	3.79	3.91	4.00	4.00	0.11	0.13	0.14	0.14	0.00	0.00	0.02	12.00
Others	0.49	0.47	0.49	0.49	2.06	2.03	2.05	2.05	1.01	0.95	1.01	1.01	0.00	0.00	0.06	6.65

World and Selected Countries and Regions

Table 12 Cottonseed Area, Yield, and Production

Country / Region	Area (Million hectares)				Yield (Metric tons per hectare)				Production (Million metric tons)				Change in Production			
	Prel.		2022/23 Proj.		Prel.		2022/23 Proj.		Prel.		2022/23 Proj.		From last month		From last year	
	2020/21	2021/22	Aug	Sep	2020/21	2021/22	Aug	Sep	2020/21	2021/22	Aug	Sep	MMT	Percent	MMT	Percent
World	30.86	31.76	32.21	32.17	1.32	1.31	1.33	1.34	40.77	41.71	42.85	43.18	0.33	0.77	1.48	3.54
United States	3.33	4.16	2.89	3.19	1.22	1.16	1.20	1.20	4.05	4.83	3.46	3.81	0.36	10.26	-1.02	-21.02
Total Foreign	27.54	27.60	29.33	28.99	1.33	1.34	1.34	1.36	36.71	36.88	39.39	39.37	-0.03	-0.06	2.49	6.75
South Asia																
India	13.29	12.15	13.20	13.00	0.88	0.86	0.88	0.90	11.72	10.40	11.68	11.68	0.00	0.00	1.27	12.25
Pakistan	2.20	2.00	2.20	2.00	0.89	1.30	1.22	1.19	1.95	2.60	2.69	2.38	-0.30	-11.28	-0.22	-8.31
China	3.25	3.10	3.15	3.15	3.50	3.41	3.42	3.48	11.37	10.58	10.78	10.97	0.20	1.82	0.39	3.70
Former Soviet Union - 12																
Uzbekistan	1.06	1.06	1.07	1.07	1.16	1.00	1.06	0.99	1.23	1.06	1.14	1.06	-0.08	-6.87	0.00	0.00
Turkmenistan	0.55	0.55	0.55	0.55	0.66	0.64	0.64	0.64	0.36	0.35	0.35	0.35	0.00	0.00	0.00	0.00
Tajikistan	0.16	0.17	0.17	0.17	1.11	1.09	1.11	1.11	0.18	0.19	0.19	0.19	0.00	0.00	0.00	1.08
Kazakhstan	0.11	0.12	0.13	0.13	0.95	0.90	0.94	0.94	0.11	0.10	0.12	0.12	0.00	0.00	0.01	13.59
South America																
Brazil	1.37	1.60	1.60	1.60	2.62	2.39	2.70	2.70	3.59	3.82	4.32	4.32	0.00	0.00	0.50	13.04
Argentina	0.41	0.48	0.43	0.43	0.72	0.68	0.71	0.71	0.29	0.33	0.30	0.30	0.00	0.00	-0.03	-7.98
Middle East																
Turkey	0.35	0.45	0.53	0.56	2.71	2.76	2.67	2.59	0.95	1.24	1.40	1.44	0.03	2.28	0.20	15.71
Syria	0.03	0.03	0.03	0.03	2.36	2.20	2.20	2.20	0.06	0.06	0.06	0.06	0.00	0.00	0.00	0.00
Iran	0.10	0.10	0.10	0.10	1.35	1.35	1.35	1.35	0.13	0.14	0.14	0.14	0.00	0.00	0.00	0.00
Australia	0.28	0.60	0.55	0.65	3.06	2.88	3.00	2.77	0.84	1.73	1.65	1.80	0.15	9.08	0.08	4.34
European Union	0.34	0.32	0.33	0.33	1.59	1.58	1.54	1.54	0.54	0.51	0.51	0.51	0.00	0.00	0.00	-0.79
Africa																
Burkina Faso	0.56	0.60	0.65	0.65	0.47	0.45	0.45	0.45	0.26	0.27	0.29	0.29	0.00	0.00	0.03	9.43
Mali	0.17	0.72	0.74	0.74	0.51	0.56	0.55	0.55	0.08	0.40	0.41	0.41	0.00	0.00	0.01	1.49
Cameroon	0.23	0.23	0.24	0.24	1.51	1.39	1.35	1.35	0.34	0.32	0.33	0.33	0.00	0.00	0.01	1.56
Cote d'Ivoire	0.45	0.47	0.46	0.46	0.61	0.60	0.58	0.58	0.27	0.28	0.27	0.27	0.00	0.00	-0.01	-4.98
Benin	0.62	0.64	0.68	0.68	0.78	0.73	0.77	0.77	0.48	0.47	0.52	0.52	0.00	0.00	0.05	11.09
Tanzania	0.17	0.24	0.35	0.35	0.56	0.46	0.43	0.43	0.09	0.11	0.15	0.15	0.00	0.00	0.04	36.94
Egypt	0.07	0.09	0.13	0.13	1.00	1.00	0.98	0.98	0.07	0.09	0.13	0.13	0.00	0.00	0.04	50.59
Nigeria	0.27	0.27	0.27	0.27	0.56	0.56	0.56	0.56	0.15	0.15	0.15	0.15	0.00	0.00	0.00	0.00
Uganda	0.10	0.10	0.10	0.10	1.40	1.40	1.49	1.49	0.14	0.14	0.15	0.15	0.00	0.00	0.01	6.43
Zimbabwe	0.24	0.25	0.24	0.24	0.39	0.33	0.34	0.34	0.09	0.08	0.08	0.08	0.00	0.00	0.00	0.00
Sudan	0.20	0.20	0.20	0.20	1.41	1.41	1.53	1.53	0.28	0.28	0.31	0.31	0.00	0.00	0.02	8.51
Mexico	0.15	0.15	0.19	0.20	2.40	2.71	2.38	2.39	0.35	0.42	0.45	0.48	0.03	5.75	0.06	14.63
Burma	0.24	0.25	0.25	0.25	1.17	1.18	1.18	1.18	0.28	0.29	0.29	0.29	0.00	0.00	0.00	0.00
Others	0.63	0.69	0.81	0.73	0.81	0.71	0.70	0.71	0.51	0.49	0.57	0.52	-0.05	-8.41	0.03	6.95

World and Selected Countries and Regions

Table 13 Peanut Area, Yield, and Production

Country / Region	Area (Million hectares)				Yield (Metric tons per hectare)				Production (Million metric tons)				Change in Production			
	Prel.		2022/23 Proj.		Prel.		2022/23 Proj.		Prel.		2022/23 Proj.		From last month		From last year	
	2020/21	2021/22	Aug	Sep	2020/21	2021/22	Aug	Sep	2020/21	2021/22	Aug	Sep	MMT	Percent	MMT	Percent
World	29.93	30.84	29.66	29.62	1.68	1.63	1.70	1.70	50.26	50.35	50.50	50.34	-0.16	-0.32	-0.01	-0.02
United States	0.65	0.63	0.61	0.57	4.27	4.64	4.63	4.65	2.79	2.90	2.81	2.65	-0.16	-5.69	-0.25	-8.45
Total Foreign	29.28	30.21	29.05	29.05	1.62	1.57	1.64	1.64	47.47	47.46	47.69	47.69	0.00	0.00	0.23	0.49
China	4.73	4.75	4.80	4.80	3.80	3.85	3.81	3.81	17.99	18.31	18.30	18.30	0.00	0.00	-0.01	-0.04
Africa																
Nigeria	3.25	3.50	3.40	3.40	1.30	1.21	1.32	1.32	4.23	4.23	4.50	4.50	0.00	0.00	0.27	6.43
Sudan	3.20	3.94	3.00	3.00	0.87	0.60	0.83	0.83	2.77	2.36	2.50	2.50	0.00	0.00	0.15	6.16
Senegal	1.23	1.21	1.20	1.20	1.47	1.38	1.42	1.42	1.80	1.68	1.70	1.70	0.00	0.00	0.02	1.31
Cameroon	0.43	0.43	0.43	0.43	1.40	1.40	1.40	1.40	0.60	0.60	0.60	0.60	0.00	0.00	0.00	0.00
Ghana	0.34	0.34	0.34	0.34	1.68	1.41	1.41	1.41	0.57	0.48	0.48	0.48	0.00	0.00	0.00	0.00
Chad	0.76	0.80	0.80	0.80	1.11	1.13	1.13	1.13	0.84	0.90	0.90	0.90	0.00	0.00	0.00	0.00
Malawi	0.40	0.40	0.40	0.40	0.88	0.88	0.88	0.88	0.35	0.35	0.35	0.35	0.00	0.00	0.00	0.00
Congo (Kinshasa)	0.50	0.50	0.50	0.50	0.90	0.90	0.90	0.90	0.45	0.45	0.45	0.45	0.00	0.00	0.00	0.00
Niger	0.90	0.92	0.92	0.92	0.66	0.56	0.60	0.60	0.59	0.52	0.55	0.55	0.00	0.00	0.03	5.97
Mali	0.43	0.43	0.43	0.43	1.16	0.87	1.00	1.00	0.49	0.37	0.43	0.43	0.00	0.00	0.06	15.49
Uganda	0.34	0.40	0.40	0.40	0.99	0.75	0.75	0.75	0.34	0.30	0.30	0.30	0.00	0.00	0.00	0.00
Burkina Faso	0.65	0.60	0.60	0.60	0.97	0.80	0.83	0.83	0.63	0.48	0.50	0.50	0.00	0.00	0.02	4.82
Guinea	0.98	1.10	1.10	1.10	1.10	1.21	1.09	1.09	1.07	1.34	1.20	1.20	0.00	0.00	-0.14	-10.11
Egypt	0.06	0.06	0.06	0.06	3.20	3.20	3.20	3.20	0.21	0.21	0.21	0.21	0.00	0.00	0.00	0.00
Central African Republic	0.10	0.10	0.10	0.10	1.50	1.50	1.50	1.50	0.15	0.15	0.15	0.15	0.00	0.00	0.00	0.00
South Africa	0.04	0.05	0.05	0.05	2.21	1.44	2.22	2.22	0.09	0.07	0.10	0.10	0.00	0.00	0.04	53.85
Mozambique	0.35	0.38	0.38	0.38	0.30	0.34	0.34	0.34	0.10	0.13	0.13	0.13	0.00	0.00	0.00	0.00
Cote d'Ivoire	0.16	0.15	0.15	0.15	1.40	1.45	1.45	1.45	0.23	0.21	0.21	0.21	0.00	0.00	0.00	0.00
Benin	0.17	0.19	0.19	0.19	1.01	0.92	0.92	0.92	0.18	0.18	0.18	0.18	0.00	0.00	0.00	0.00
South Asia																
India	6.02	5.60	5.50	5.50	1.11	1.21	1.21	1.21	6.70	6.80	6.65	6.65	0.00	0.00	-0.15	-2.21
Pakistan	0.14	0.10	0.10	0.10	0.89	0.92	0.91	0.91	0.12	0.09	0.09	0.09	0.00	0.00	0.00	1.11
Southeast Asia																
Indonesia	0.55	0.55	0.54	0.54	1.78	1.76	1.76	1.76	0.97	0.96	0.95	0.95	0.00	0.00	-0.01	-1.04
Burma	1.06	1.06	1.07	1.07	1.48	1.51	1.55	1.55	1.56	1.60	1.65	1.65	0.00	0.00	0.05	3.13
Vietnam	0.17	0.16	0.16	0.16	2.50	2.50	2.50	2.50	0.41	0.40	0.39	0.39	0.00	0.00	-0.01	-3.00
Thailand	0.02	0.02	0.02	0.02	1.67	1.67	1.67	1.67	0.04	0.04	0.04	0.04	0.00	0.00	0.00	0.00
South America																
Argentina	0.40	0.41	0.38	0.38	3.16	3.17	3.29	3.29	1.27	1.30	1.25	1.25	0.00	0.00	-0.05	-3.85
Brazil	0.17	0.20	0.21	0.21	3.86	3.68	3.66	3.66	0.64	0.72	0.75	0.75	0.00	0.00	0.03	4.46
Mexico	0.06	0.05	0.05	0.05	1.73	1.74	1.74	1.74	0.10	0.09	0.09	0.09	0.00	0.00	0.00	0.00
Others	1.70	1.83	1.79	1.79	1.16	1.19	1.18	1.18	1.98	2.17	2.10	2.10	0.00	0.00	-0.07	-3.18

Table 14 Sunflowerseed Area, Yield, and Production

Country / Region	Area (Million hectares)				Yield (Metric tons per hectare)				Production (Million metric tons)				Change in Production			
	2020/21	Prel. 2021/22	2022/23 Proj.		2020/21	Prel. 2021/22	2022/23 Proj.		2020/21	Prel. 2021/22	2022/23 Proj.		From last month		From last year	
		Aug	Sep		Aug	Sep			Aug	Sep	MMT	Percent	MMT	Percent		
World	26.95	28.72	27.31	27.48	1.83	1.99	1.86	1.89	49.27	57.13	50.93	51.95	1.02	2.00	-5.18	-9.07
United States	0.67	0.50	0.65	0.65	2.01	1.72	1.94	1.94	1.35	0.86	1.25	1.25	0.00	0.00	0.39	45.31
Total Foreign	26.27	28.22	26.66	26.83	1.82	1.99	1.86	1.89	47.92	56.27	49.68	50.69	1.02	2.05	-5.57	-9.90
Former Soviet Union - 12																
Russia	8.35	9.61	9.70	9.70	1.59	1.62	1.75	1.75	13.27	15.57	17.00	17.00	0.00	0.00	1.43	9.17
Ukraine	7.00	7.10	4.60	4.60	2.01	2.46	2.07	2.28	14.10	17.50	9.50	10.50	1.00	10.53	-7.00	-40.00
Kazakhstan	0.75	0.94	1.05	1.05	1.13	1.10	1.05	1.05	0.84	1.03	1.10	1.10	0.00	0.00	0.07	6.59
European Union	4.44	4.36	4.72	4.86	2.00	2.35	2.06	2.00	8.90	10.25	9.70	9.70	0.00	0.00	-0.55	-5.34
South America																
Argentina	1.67	1.60	2.00	2.00	2.05	2.09	2.10	2.10	3.43	3.35	4.20	4.20	0.00	0.00	0.85	25.37
Uruguay	0.07	0.07	0.08	0.08	1.69	1.62	1.71	1.71	0.11	0.11	0.13	0.13	0.00	0.00	0.02	16.36
Bolivia	0.14	0.14	0.14	0.14	1.39	1.39	1.40	1.40	0.19	0.20	0.20	0.20	0.00	0.00	0.00	1.54
Brazil	0.03	0.04	0.04	0.04	1.13	1.62	1.60	1.60	0.04	0.06	0.06	0.06	0.00	0.00	0.00	6.67
Paraguay	0.03	0.03	0.03	0.03	1.53	1.55	1.56	1.56	0.05	0.05	0.05	0.05	0.00	0.00	0.00	4.17
China	0.87	1.10	1.00	1.00	2.94	2.64	2.80	2.80	2.57	2.90	2.80	2.80	0.00	0.00	-0.10	-3.45
South Asia																
India	0.23	0.25	0.25	0.28	0.82	0.76	0.78	0.78	0.19	0.19	0.20	0.22	0.02	10.26	0.03	13.16
Pakistan	0.15	0.15	0.15	0.15	1.07	1.00	1.03	1.03	0.16	0.15	0.16	0.16	0.00	0.00	0.01	3.33
Middle East																
Turkey	0.72	0.76	0.79	0.79	2.17	2.30	2.41	2.41	1.56	1.75	1.90	1.90	0.00	0.00	0.15	8.57
Iran	0.04	0.04	0.04	0.04	1.08	1.00	1.02	1.02	0.04	0.04	0.04	0.04	0.00	0.00	0.00	0.00
Israel	0.00	0.00	0.00	0.00	9.00	7.00	6.00	6.00	0.01	0.01	0.01	0.01	0.00	0.00	0.01	71.43
Africa																
Egypt	0.01	0.01	0.01	0.01	2.38	2.38	2.50	2.50	0.02	0.02	0.03	0.03	0.00	0.00	0.01	31.58
Morocco	0.02	0.02	0.02	0.02	1.16	1.25	1.11	1.11	0.02	0.03	0.02	0.02	0.00	0.00	-0.01	-20.00
South Africa	0.48	0.68	0.76	0.76	1.42	1.30	1.03	1.03	0.68	0.88	0.78	0.78	0.00	0.00	-0.10	-11.43
Burma	0.60	0.60	0.60	0.60	0.65	0.65	0.65	0.65	0.39	0.39	0.39	0.39	0.00	0.00	0.00	0.00
Canada	0.05	0.04	0.04	0.03	2.24	2.05	2.17	1.88	0.10	0.08	0.08	0.06	-0.02	-20.51	-0.02	-24.39
Australia	0.02	0.02	0.02	0.03	1.44	1.58	1.22	1.48	0.03	0.03	0.02	0.04	0.02	68.18	0.01	23.33
Others	0.62	0.67	0.64	0.64	1.98	2.54	2.07	2.07	1.23	1.69	1.32	1.32	0.00	0.00	-0.37	-22.00

World and Selected Countries and Regions

Table 15 Rapeseed Area, Yield, and Production

Country / Region	Area (Million hectares)				Yield (Metric tons per hectare)				Production (Million metric tons)				Change in Production			
	Prel.		2022/23 Proj.		Prel.		2022/23 Proj.		Prel.		2022/23 Proj.		From last month		From last year	
	2020/21	2021/22	Aug	Sep	2020/21	2021/22	Aug	Sep	2020/21	2021/22	Aug	Sep	MMT	Percent	MMT	Percent
World	34.89	37.81	39.81	39.90	2.12	1.95	2.07	2.08	73.85	73.84	82.48	83.14	0.66	0.81	9.31	12.61
United States	0.73	0.85	0.78	0.78	2.16	1.46	2.10	2.10	1.58	1.24	1.63	1.63	0.00	0.00	0.39	31.35
Total Foreign	34.16	36.96	39.04	39.12	2.12	1.96	2.07	2.08	72.28	72.59	80.85	81.51	0.66	0.82	8.92	12.29
European Union	5.32	5.33	5.82	5.86	3.14	3.22	3.09	3.10	16.73	17.20	17.95	18.15	0.20	1.11	0.96	5.55
United Kingdom	0.38	0.31	0.36	0.36	2.73	3.20	3.40	3.40	1.04	0.98	1.23	1.23	0.00	0.00	0.24	24.87
Switzerland	0.02	0.02	0.02	0.02	3.14	3.14	3.14	3.14	0.07	0.07	0.07	0.07	0.00	0.00	0.00	0.00
Canada	8.33	8.95	8.60	8.60	2.34	1.54	2.33	2.33	19.49	13.76	20.00	20.00	0.00	0.00	6.24	45.38
China	6.77	6.80	7.10	7.10	2.08	2.16	2.07	2.07	14.05	14.71	14.70	14.70	0.00	0.00	-0.01	-0.10
South Asia																
India	6.70	8.20	8.60	8.60	1.27	1.34	1.28	1.28	8.50	11.00	11.00	11.00	0.00	0.00	0.00	0.00
Pakistan	0.22	0.28	0.35	0.35	1.32	1.35	1.33	1.33	0.30	0.38	0.47	0.47	0.00	0.00	0.09	24.00
Bangladesh	0.25	0.25	0.25	0.25	0.92	0.92	0.92	0.92	0.23	0.23	0.23	0.23	0.00	0.00	0.00	0.00
Former Soviet Union - 12																
Russia	1.45	1.62	2.20	2.20	1.77	1.71	1.77	1.77	2.57	2.78	3.90	3.90	0.00	0.00	1.13	40.54
Ukraine	1.19	1.04	1.30	1.15	2.31	2.91	2.54	2.78	2.75	3.02	3.30	3.20	-0.10	-3.03	0.19	6.14
Belarus	0.36	0.32	0.33	0.33	2.06	1.59	1.69	1.69	0.73	0.50	0.55	0.55	0.00	0.00	0.05	10.00
Kazakhstan	0.12	0.12	0.13	0.13	1.23	1.24	1.23	1.23	0.15	0.15	0.16	0.16	0.00	0.00	0.01	9.59
Australia	2.61	3.22	3.40	3.60	1.82	2.10	1.79	1.86	4.76	6.76	6.10	6.70	0.60	9.84	-0.06	-0.92
South America																
Chile	0.04	0.04	0.04	0.03	3.81	3.86	4.00	3.87	0.14	0.14	0.16	0.12	-0.04	-25.00	-0.02	-11.11
Paraguay	0.05	0.04	0.05	0.05	1.41	1.45	1.51	1.51	0.07	0.06	0.07	0.07	0.00	0.00	0.00	6.25
Ethiopia	0.03	0.03	0.03	0.03	1.80	1.80	1.80	1.80	0.05	0.05	0.05	0.05	0.00	0.00	0.00	0.00
Others	0.33	0.41	0.47	0.48	2.02	2.03	1.95	1.95	0.67	0.83	0.92	0.93	0.00	0.43	0.10	11.94

World and Selected Countries and Regions

Table 16 Copra, Palm Kernel, and Palm Oil Production

Country / Region	Production (Million metric tons)				Change in Production			
	2020/21	Prel.	2022/23 Proj.		From last month		From last year	
		2021/22	Aug	Sep	MMT	Percent	MMT	Percent
Oilseed, Copra								
Philippines	2.40	2.60	2.60	2.60	0.00	0.00	0.00	0.00
Indonesia	1.67	1.68	1.68	1.68	0.00	0.00	0.00	0.00
India	0.75	0.79	0.80	0.80	0.00	0.00	0.01	1.27
Vietnam	0.28	0.29	0.29	0.29	0.00	0.00	0.00	0.00
Papua New Guinea	0.11	0.11	0.11	0.11	0.00	0.00	0.00	0.00
Thailand	0.07	0.07	0.07	0.07	0.00	0.00	0.00	0.00
Sri Lanka	0.07	0.07	0.07	0.07	0.00	0.00	0.00	0.00
Mexico	0.04	0.05	0.04	0.04	0.00	0.00	-0.01	-20.00
Solomon Islands	0.03	0.03	0.03	0.03	0.00	0.00	0.00	0.00
Cote d'Ivoire	0.03	0.03	0.03	0.03	0.00	0.00	0.00	0.00
World	5.59	5.86	5.86	5.86	0.00	0.00	0.00	0.00
Oilseed, Palm Kernel								
Indonesia	11.46	12.00	12.12	12.12	0.00	0.00	0.12	1.00
Malaysia	4.34	4.60	4.95	4.95	0.00	0.00	0.35	7.61
Nigeria	0.82	0.90	0.90	0.90	0.00	0.00	0.00	0.00
Thailand	0.79	0.83	0.86	0.86	0.00	0.00	0.03	3.61
Colombia	0.29	0.31	0.34	0.34	0.00	0.00	0.03	9.68
Guatemala	0.17	0.18	0.18	0.18	0.00	0.00	0.00	0.00
Papua New Guinea	0.16	0.17	0.17	0.17	0.00	0.00	0.01	6.25
Honduras	0.13	0.16	0.16	0.16	0.00	0.00	0.00	0.00
Brazil	0.14	0.15	0.15	0.15	0.00	0.00	0.01	7.14
Cameroon	0.15	0.15	0.15	0.15	0.00	0.00	0.00	0.00
World	19.05	20.03	20.59	20.59	0.01	0.05	0.57	2.85
Oil, Palm								
Indonesia	43.50	45.30	46.50	46.50	0.00	0.00	1.20	2.65
Malaysia	17.85	18.20	19.80	19.80	0.00	0.00	1.60	8.79
Thailand	2.96	3.15	3.26	3.26	0.00	0.00	0.11	3.49
Colombia	1.56	1.75	1.84	1.84	0.00	0.00	0.09	5.14
Nigeria	1.28	1.40	1.40	1.40	0.00	0.00	0.00	0.00
Guatemala	0.87	0.88	0.91	0.91	0.00	0.00	0.03	3.41
Papua New Guinea	0.60	0.63	0.65	0.65	0.00	0.00	0.03	4.84
Honduras	0.45	0.60	0.60	0.60	0.00	0.00	0.00	0.00
Cote d'Ivoire	0.55	0.58	0.60	0.60	0.00	0.00	0.03	5.26
Brazil	0.55	0.55	0.57	0.57	0.00	0.00	0.02	3.64
World	73.08	75.95	79.23	79.16	-0.07	-0.09	3.21	4.23

World and Selected Countries and Regions

Table 17 Cotton Area, Yield, and Production

Country / Region	Area (Million hectares)				Yield (Kilograms per hectare)				Production (Million 480 lb. bales)				Change in Production			
	Prel.		2022/23 Proj.		Prel.		2022/23 Proj.		Prel.		2022/23 Proj.		From last month		From last year	
	2020/21	2021/22	Aug	Sep	2020/21	2021/22	Aug	Sep	2020/21	2021/22	Aug	Sep	MBales	Percent	MBales	Percent
World	31.42	32.31	32.76	32.72	772	780	778	788	111.37	115.71	117.01	118.45	1.43	1.22	2.74	2.37
United States	3.33	4.16	2.89	3.19	957	918	949	945	14.61	17.52	12.57	13.83	1.26	10.04	-3.69	-21.06
Total Foreign	28.09	28.15	29.87	29.53	750	759	761	771	96.76	98.18	104.44	104.61	0.17	0.16	6.43	6.55
South Asia																
India	13.29	12.15	13.20	13.00	452	439	454	461	27.60	24.50	27.50	27.50	0.00	0.00	3.00	12.24
Pakistan	2.20	2.00	2.20	2.00	445	653	614	599	4.50	6.00	6.20	5.50	-0.70	-11.29	-0.50	-8.33
China	3.25	3.10	3.15	3.15	1,976	1,896	1,901	1,935	29.50	27.00	27.50	28.00	0.50	1.82	1.00	3.70
South America																
Brazil	1.37	1.60	1.60	1.60	1,720	1,565	1,769	1,769	10.82	11.50	13.00	13.00	0.00	0.00	1.50	13.04
Argentina	0.41	0.48	0.43	0.43	717	680	692	692	1.35	1.50	1.35	1.35	0.00	0.00	-0.15	-10.00
Paraguay	0.01	0.01	0.01	0.01	416	416	416	416	0.02	0.02	0.02	0.02	0.00	0.00	0.00	0.00
Africa																
Burkina Faso	0.56	0.60	0.65	0.65	372	351	352	352	0.95	0.96	1.05	1.05	0.00	0.00	0.09	9.38
Mali	0.17	0.72	0.74	0.74	396	432	427	427	0.30	1.43	1.45	1.45	0.00	0.00	0.02	1.40
Cote d'Ivoire	0.45	0.47	0.46	0.46	494	486	473	473	1.01	1.05	1.00	1.00	0.00	0.00	-0.05	-4.76
Benin	0.62	0.64	0.68	0.68	513	483	504	504	1.45	1.42	1.58	1.58	0.00	0.00	0.16	10.92
Egypt	0.07	0.09	0.13	0.13	720	717	703	703	0.22	0.28	0.42	0.42	0.00	0.00	0.14	50.00
Cameroon	0.23	0.23	0.24	0.24	658	606	590	590	0.68	0.64	0.65	0.65	0.00	0.00	0.01	1.56
Tanzania	0.17	0.24	0.35	0.35	284	231	218	218	0.22	0.26	0.35	0.35	0.00	0.00	0.10	37.25
Nigeria	0.27	0.27	0.27	0.27	282	282	282	282	0.35	0.35	0.35	0.35	0.00	0.00	0.00	0.00
Zimbabwe	0.24	0.25	0.24	0.24	222	191	195	195	0.25	0.22	0.22	0.22	0.00	0.00	0.00	0.00
Ethiopia	0.08	0.08	0.08	0.08	637	637	637	637	0.24	0.24	0.24	0.24	0.00	0.00	0.00	0.00
Former Soviet Union - 12																
Uzbekistan	1.06	1.06	1.07	1.07	647	555	590	549	3.15	2.70	2.90	2.70	-0.20	-6.90	0.00	0.00
Turkmenistan	0.55	0.55	0.55	0.55	368	356	356	356	0.92	0.90	0.90	0.90	0.00	0.00	0.00	0.00
Tajikistan	0.16	0.17	0.17	0.17	619	608	615	615	0.46	0.48	0.48	0.48	0.00	0.00	0.01	1.05
Kazakhstan	0.11	0.12	0.13	0.13	534	502	523	523	0.27	0.27	0.30	0.30	0.00	0.00	0.04	13.21
Middle East																
Turkey	0.35	0.45	0.53	0.56	1,804	1,839	1,783	1,726	2.90	3.80	4.30	4.40	0.10	2.33	0.60	15.79
Syria	0.03	0.03	0.03	0.03	1,219	1,132	1,132	1,132	0.14	0.13	0.13	0.13	0.00	0.00	0.00	0.00
Iran	0.10	0.10	0.10	0.10	871	871	871	871	0.40	0.40	0.40	0.40	0.00	0.00	0.00	0.00
Australia	0.28	0.60	0.55	0.65	2,217	2,087	2,177	2,010	2.80	5.75	5.50	6.00	0.50	9.09	0.25	4.35
Mexico	0.15	0.15	0.19	0.20	1,532	1,725	1,518	1,524	1.02	1.22	1.33	1.40	0.08	5.66	0.18	14.75
Burma	0.24	0.25	0.25	0.25	635	644	644	644	0.70	0.73	0.73	0.73	0.00	0.00	0.00	0.00
Others	1.73	1.77	1.90	1.82	575	549	530	541	4.57	4.46	4.61	4.51	-0.11	-2.28	0.05	1.14

World and Selected Countries and Regions

TABLE 18

The table below presents a record of the September projection and the final Estimate. Using world wheat production as an example, the "root mean square error" means that chances are 2 out of 3 that the current forecast will not be above or below the final estimate by more than 1.9 percent. Chances are 9 out of 10 (90% confidence level) that the difference will not exceed 3.2 percent. The average difference between the September projection and the final estimate is 8.5 million tons, ranging from 0.9 million to 30.7 million tons. The September projection has been below the estimate 26 times and above 15 times.

RELIABILITY OF PRODUCTION PROJECTIONS 1/

COMMODITY AND REGION	Root mean square error	90 percent confidence interval	Difference between forecast and final estimate				
			Average	Smallest	Largest	Years	
						Below final	Above final
	Percent		---Million metric tons---				
WHEAT							
World	1.9	3.2	8.5	0.9	30.7	26	15
U.S.	1.9	3.2	0.9	0.0	2.5	16	25
Foreign	2.2	3.6	8.5	0.2	30.9	29	12
COARSE GRAINS 2/							
World	2.2	3.6	17.6	0.2	50.6	31	10
U.S.	4.1	7.0	7.9	0.2	26.0	26	15
Foreign	2.5	4.2	15.7	1.0	59.9	30	11
RICE (Milled)							
World	2.2	3.8	6.2	0.4	24.1	32	9
U.S.	4.3	7.2	0.2	0.0	0.5	23	17
Foreign	2.3	3.9	6.3	0.3	24.4	32	9
SOYBEANS							
World	4.7	7.9	7.7	0.4	31.7	23	18
U.S.	5.0	8.3	3.0	0.2	10.4	22	19
Foreign	7.6	12.8	7.1	0.9	33.3	18	23
COTTON			---Million 480-lb. bales---				
World	4.6	7.8	3.2	0.1	12.6	23	18
U.S.	6.7	11.3	0.9	0.0	2.5	19	21
Foreign	5.2	8.7	2.8	0.0	11.3	25	16
UNITED STATES			-----Million bushels-----				
<i>CORN</i>	4.3	7.3	296	15	885	26	15
<i>SORGHUM</i>	6.0	10.0	23	0	81	17	23
<i>BARLEY</i>	5.1	8.5	11	1	36	16	25
<i>OATS</i>	9.5	16.0	11	0	44	6	33

1/ Marketing years 1981/82 through 2021/22 for grains, soybeans (U.S. only), and cotton. Final for grains, soybeans, and cotton is defined as the first November estimate following the marketing year for 1981/82 through 2020/21, and for 2021/22 the last month's estimate.

2/ Includes corn, sorghum, barley, oats, rye, millet, and mixed grain

September 2022

Global Market Analysis, FAS, USDA