



United States
Department of
Agriculture

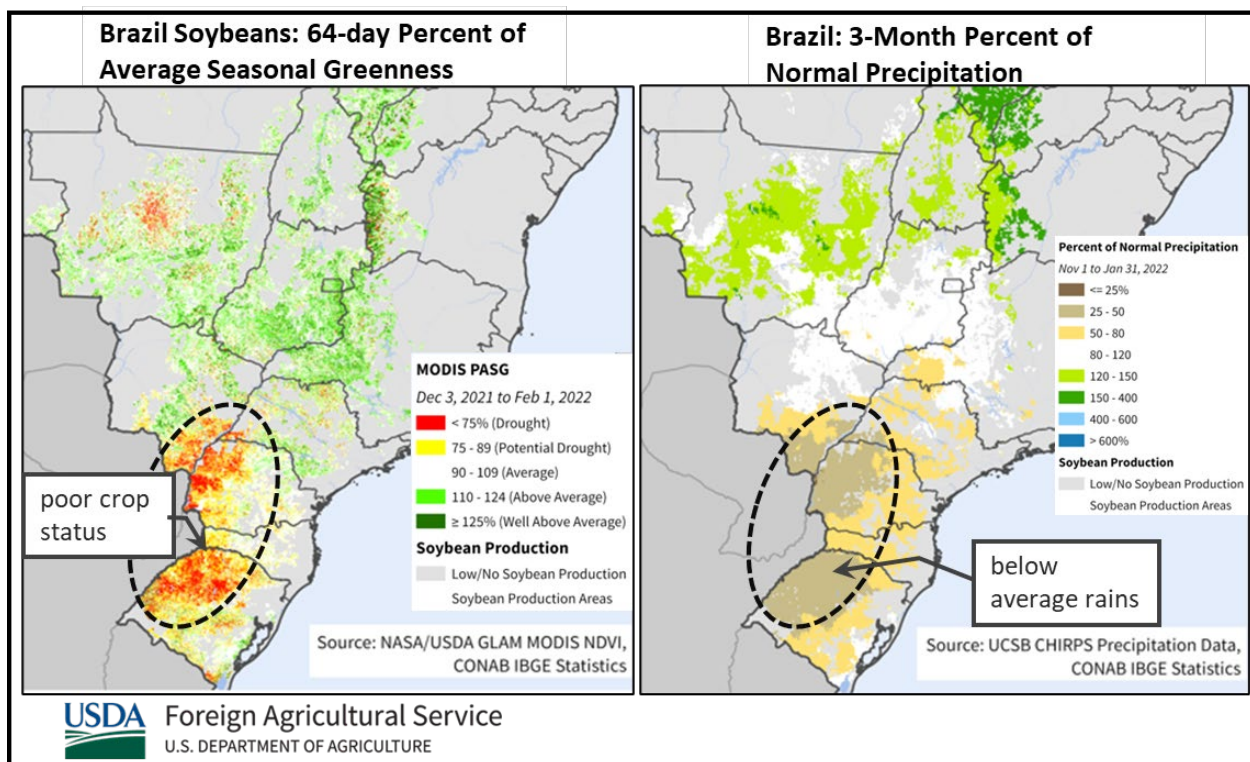
Foreign
Agricultural
Service

World Agricultural Production

Circular Series
WAP 2-22
February 2022

Brazil Soybeans: Drought Reduces Production Estimate

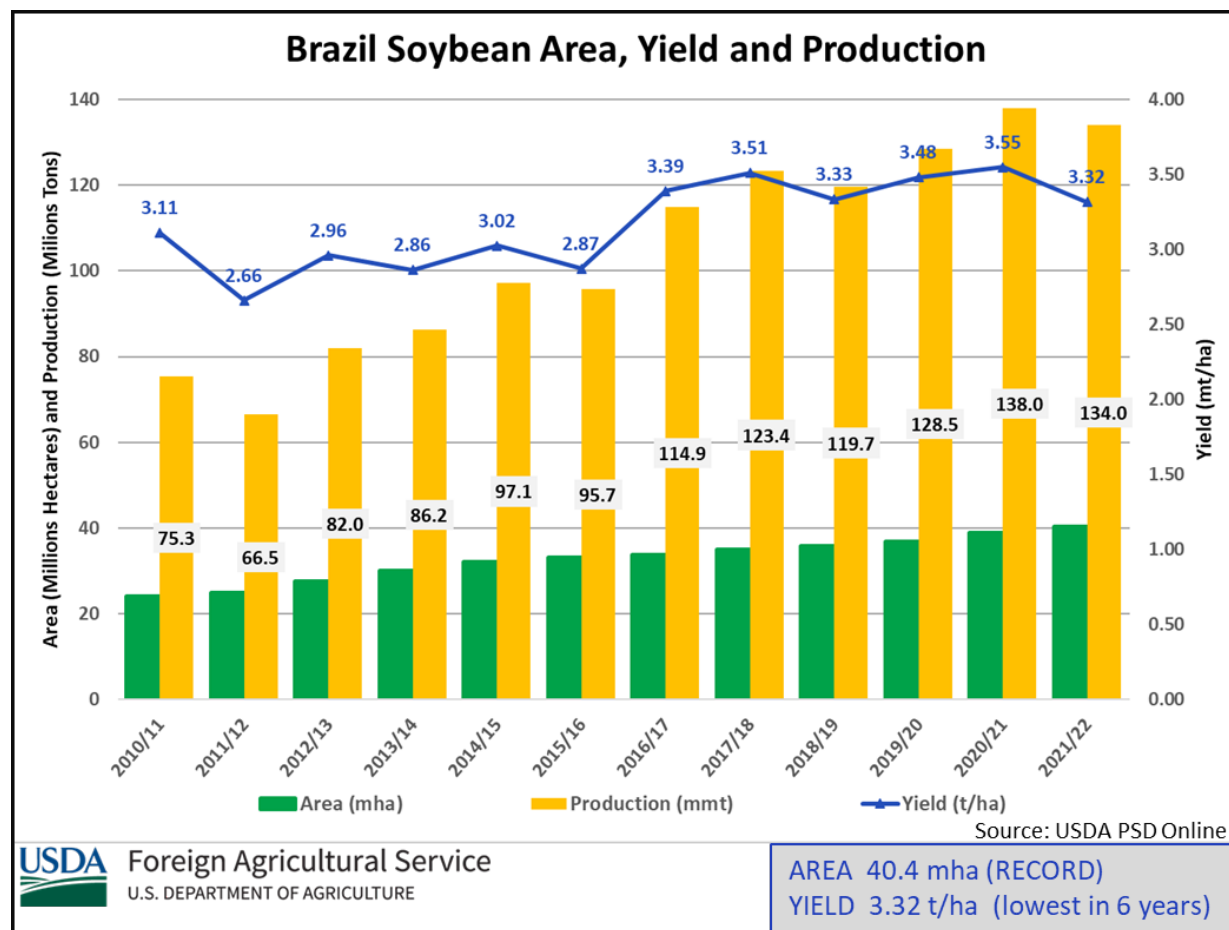
Brazil soybean production for marketing year 2021/22 is estimated at 134.0 million metric tons (mmt), down 5.0 mmt (4 percent) from last month, and lower by 4.0 mmt (3 percent) from last season's record crop. Harvested area is estimated at a record 40.4 million hectares (mha), up 1.5 mha (4 percent) from last season's record area. Yield is estimated at 3.32 tons per hectare (t/ha), 4 percent below last month and 7 percent lower than last season. The decline this month reflects the continuing poor vegetation status of crops and early harvest results in southern Brazil.



Roughly 30 percent of Brazil's soybean area is cultivated in the two states of Paraná and Rio Grande do Sul. This region is experiencing a historic drought with below-average precipitation and anomalously high daytime temperatures. Similarly, southeastern Mato Grosso do Sul, where a large portion of the state's soybeans are grown, also received below-average rainfall. This situation resulted in high evaporative stress and coincided with the crop phenological stages most sensitive to moisture stress. The drought-stricken areas correspond to areas exhibiting a significant

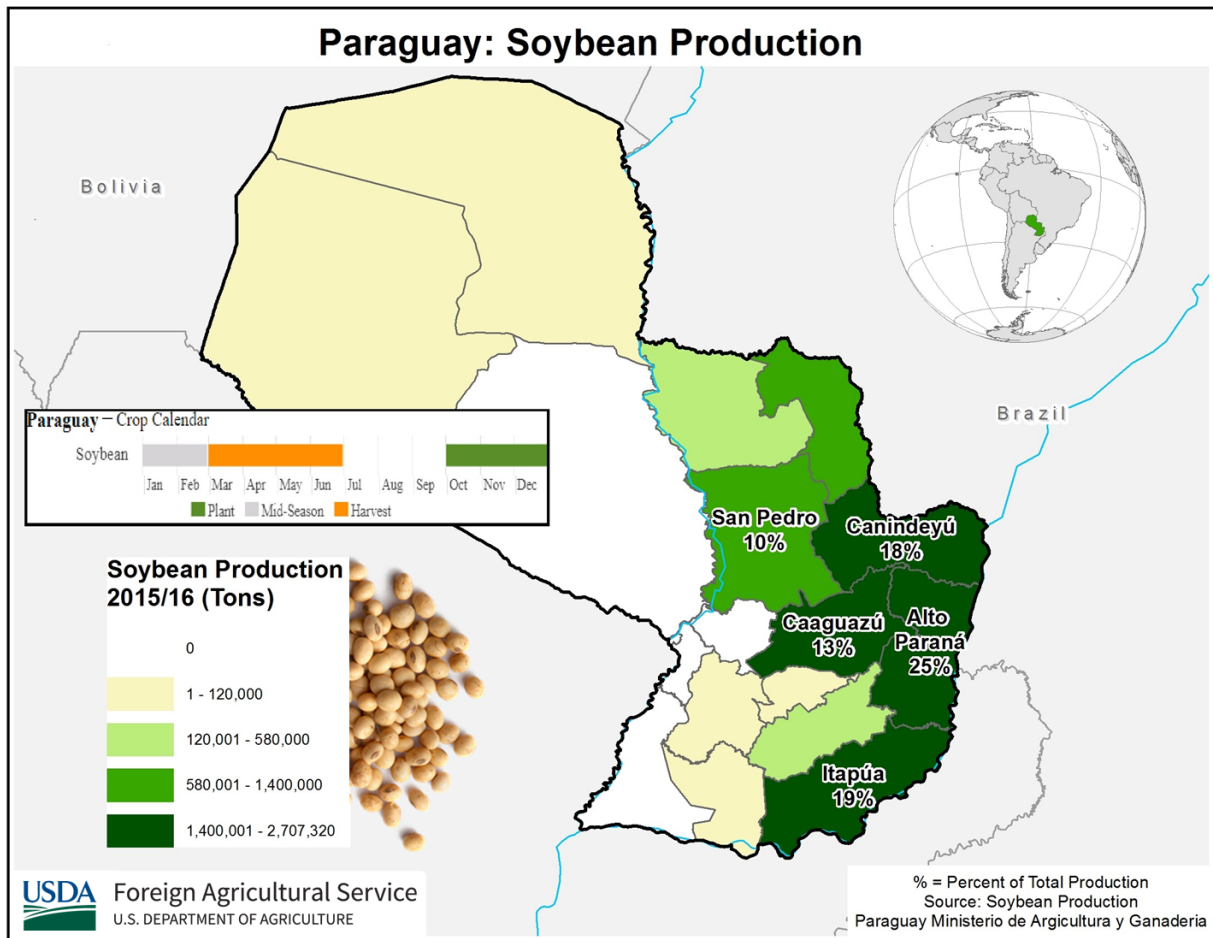
Approved by the World Agricultural Outlook Board

reduction in crop vegetation status, shown in the satellite-derived Percent of Average Seasonal Greenness (PASG) index. The state reporting agency for Paraná, SEAB-DERAL (*Secretaria de Estado da Agricultura e do Abastecimento Departamento de Economia Rural*), and the Technical Assistance and Rural Extension of Rio Grande do Sul (EMATER-RS) report substantial yield losses. The return of rainfall in mid-January arrived too late for much of the crop, although it will benefit the later planted crop.

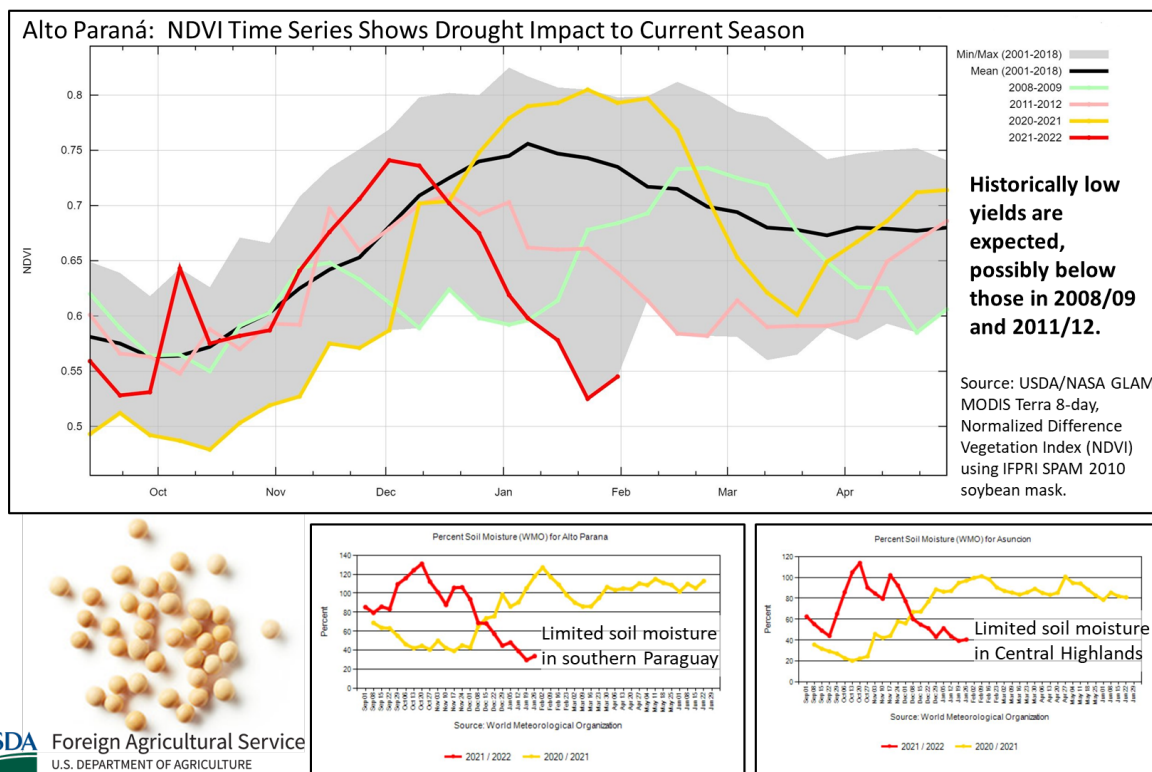


States in the center-west and northern regions received abundant rainfall and crop conditions were favorable during the growing season. Approximately 12 percent of the crop has been harvested nationally and about 32 percent in the largest producer Mato Grosso, well ahead of the 5-year pace of 17 percent for the state. (For more information, please contact Sunita.Yadav-Pauletti@usda.gov.)

Paraguay Soybeans: Historically Dry Conditions Limit Yields



USDA estimates Paraguay soybean production for marketing year (MY) 2021/22 at 6.3 million metric tons, down 26 percent from last month and 36 percent from last year. Area is set at 2.8 million hectares, down 13 percent from last month and 11 percent from last year. Yield is estimated at 2.25 tons per hectare, down 15 percent from last month and 28 percent from last year.

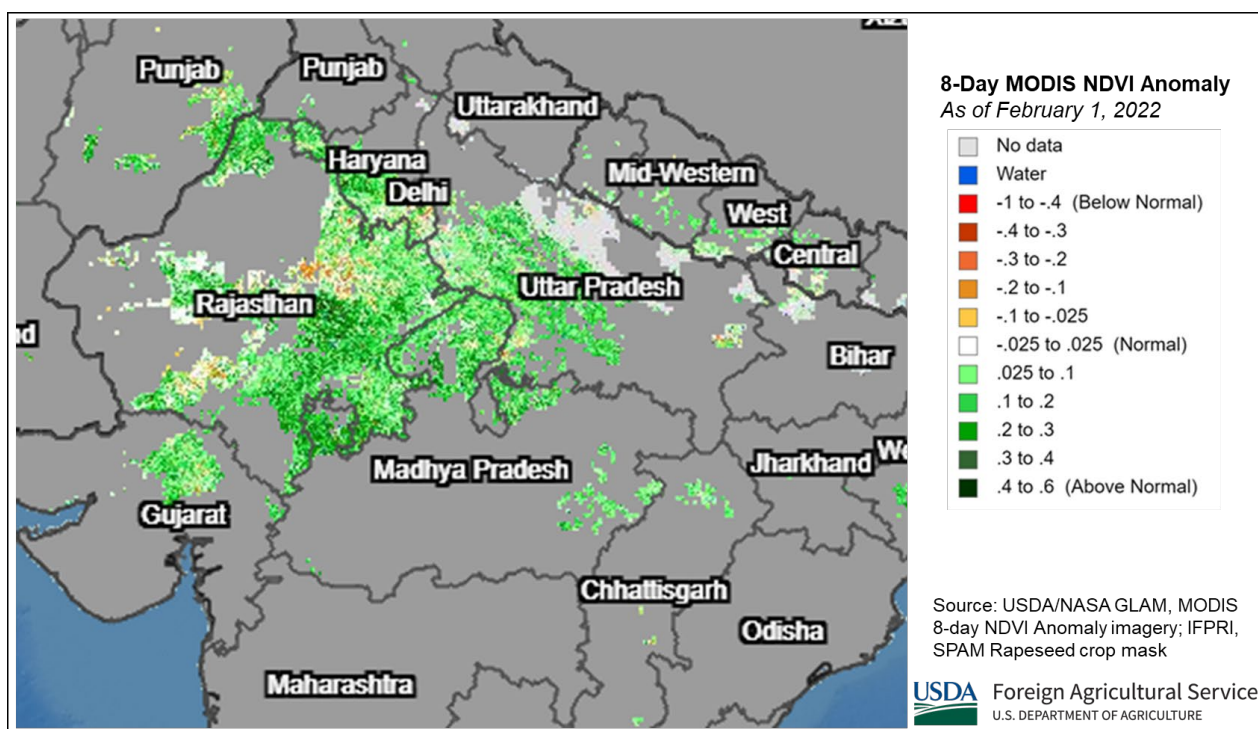


Soybean production expectations continue to decrease after farmers reported dry field conditions and almost no rain. Widespread areas of eastern Paraguay reported persistent dry conditions throughout the growing season, including the top-producing department Alto Paraná. For example, the department of Canindeyú did not have sufficient rain from September 30 through December. Much needed rain arrived in late January 2022. Soil moisture conditions across soybean regions have been suboptimal for crop growth and pod filling. High protein levels and very small beans are expected from this harvest. Combining has begun, but early reported yields are poor and below even past, historically low average yields in MY 2008/09 and MY 2011/12. (For more information, please contact Denise.McWilliams@usda.gov.)

India Rapeseed: Production up 27 Percent from Last Year

USDA forecasts India rapeseed production for marketing year (MY) 2021/22 at 10.8 million tons, up 14 percent from last month and 27 percent from last year. Area is estimated at 8.5 million hectares, up 2 percent from last month and up nearly 27 percent from 2020 due to favorable planting conditions and a 9 percent higher minimum support price from 2020. Yield is forecast at 1.27 metric tons per hectare, up 11 percent from last month and up slightly from last year.

India: Strong Crop Vigor Across Major Rapeseed Growing Regions

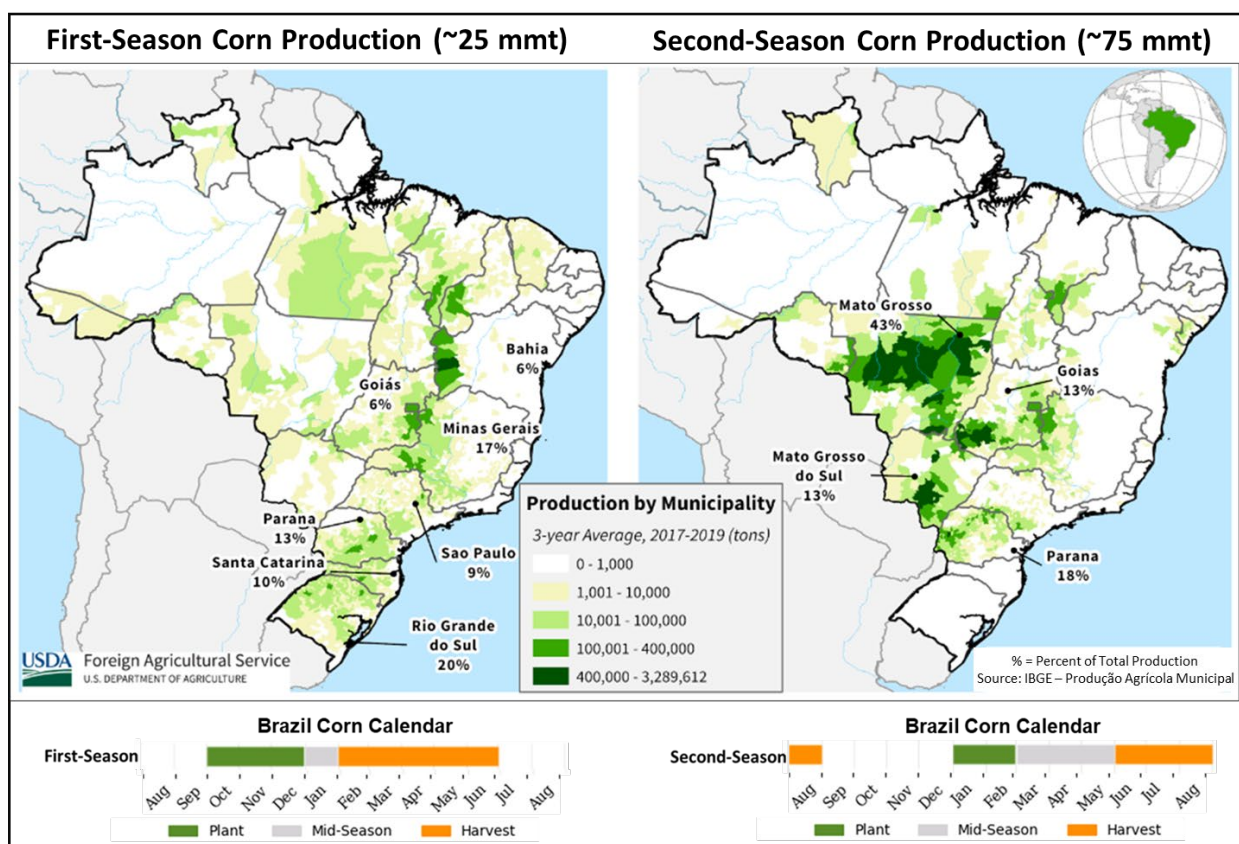


According to the India Ministry of Agriculture’s “*All India Crop Situation*” report published January 27, 2022, farmers have planted 9.1 million hectares of rapeseed/mustard, up 25 percent from the same period last year. In Rajasthan, the largest producer, planting is up nearly 37 percent from the same period last year. Currently, the rapeseed crop is flowering. The satellite-derived Normalized Difference Vegetation Index (NDVI) anomaly (January 24 - February 1, 2022) shows strong crop vigor in Rajasthan. Trade reports have not indicated any incidences of pests or disease.

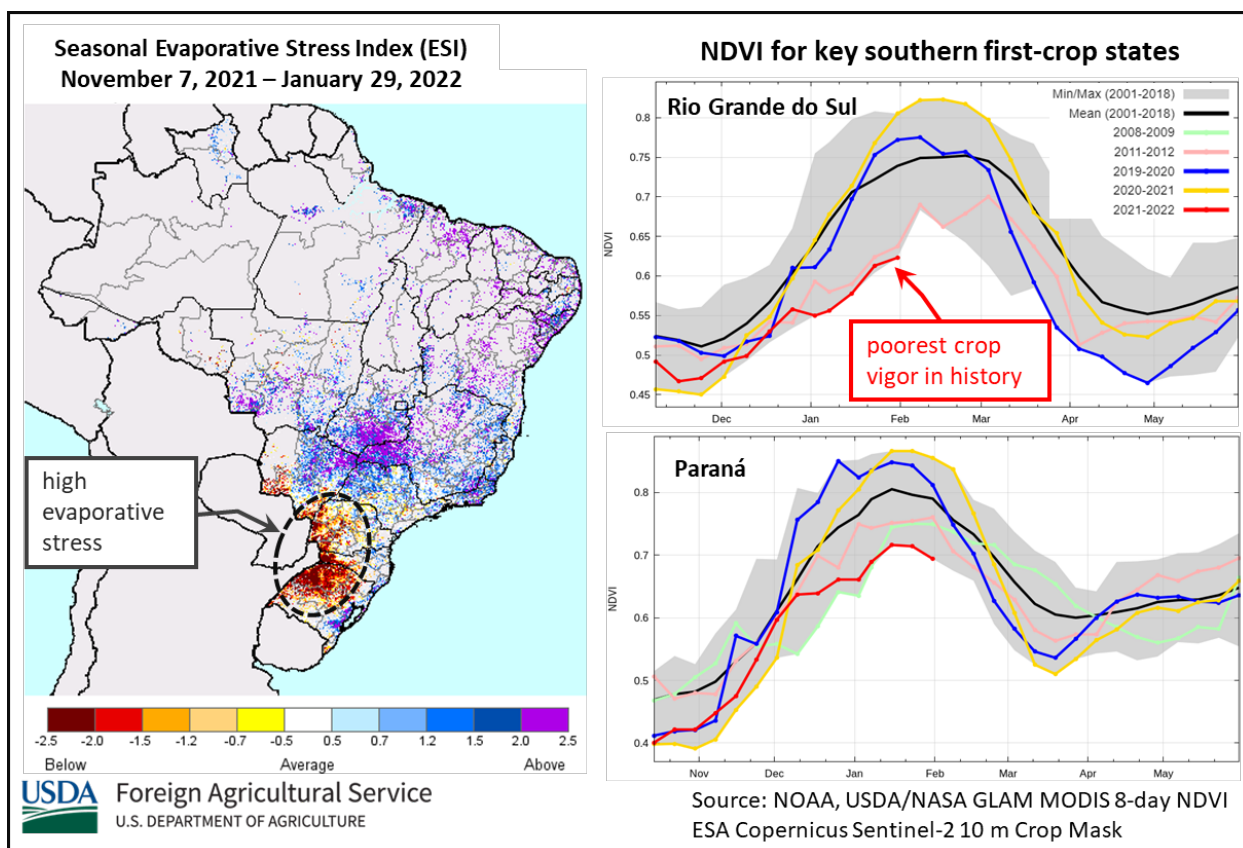
Rapeseed is grown only in the *rabi* season. Rapeseed is planted in early November until January and harvested in late March. (For more information, please contact Arnella.Trent@usda.gov.)

Brazil Corn: Production Lowered Due to Reduced Yields for the First Crop

Brazil total corn production for marketing year 2021/22 is estimated at a record 114.0 million metric tons (mmt), lower by 1.0 mmt (1 percent) from last month, but larger than last year’s crop by 27.0 mmt (31 percent). Total harvested area, for all three corn crops, is estimated at a record 20.8 million hectares (mha), up 0.9 mha (5 percent) from last year. Yield is estimated at 5.48 tons per hectare (t/ha), about 1 percent lower than last month, but 25 percent above last year’s dismal crop, and 5 percent above the 5-year average. This month’s reduction reflects the yield losses for the first crop in the southern states of Paraná, Rio Grande do Sul, and Santa Catarina.



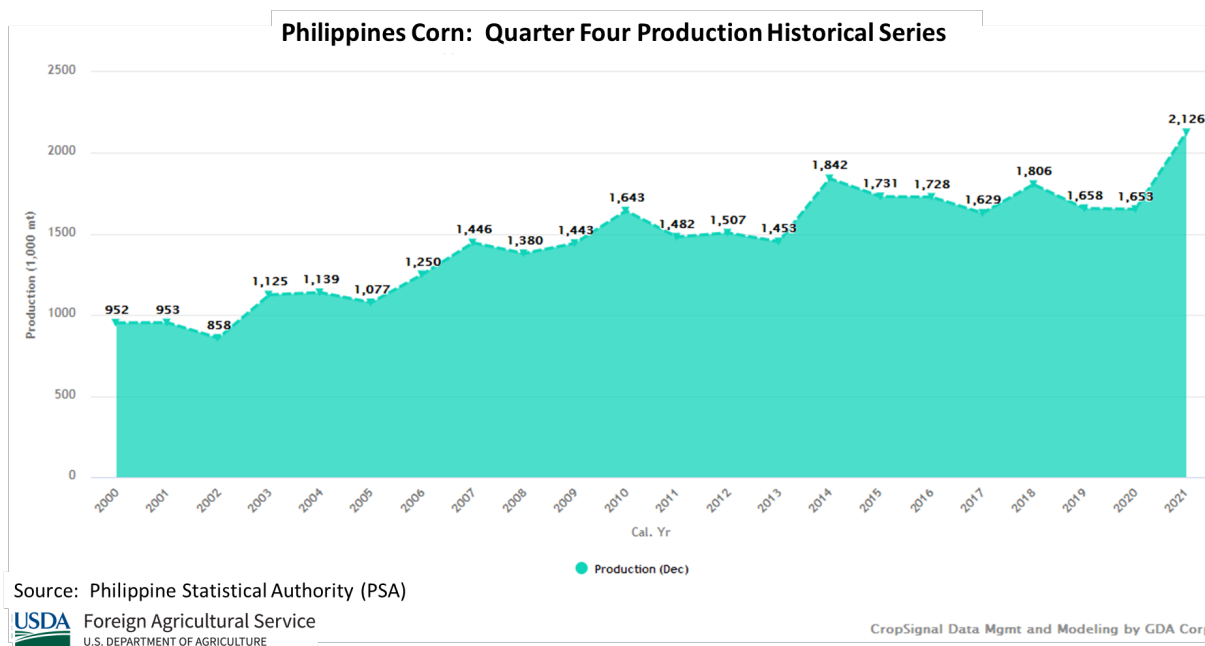
Drought conditions persisted through mid-January for the largest first-crop producing region of southern Brazil. Low rainfall amounts combined with high maximum temperatures resulted in high evaporative stress for crops, shown by the seasonal Evaporative Stress Index (ESI). Further evidence is provided by the satellite-derived Normalized Difference Vegetation Index (NDVI) that indicates low vegetation vigor throughout the south (roughly 36 percent of total first-crop area). Brazil's Agriculture Ministry, *Companhia Nacional de Abastecimento* (CONAB), reduced first-crop yield by 15 percent from their prior month estimate. Production in Paraná, Rio Grande do Sul, and Santa Catarina were reduced by 35, 48 and 3 percent, respectively. Although CONAB reduced estimates in Santa Catarina by 3 percent, according to state-level organizations, Santa Catarina yield losses are over 40 percent. Weather was more favorable in the northeastern regions. Harvest is underway in the southern regions with 11 percent harvested overall.



Planting of the larger second-season crop, roughly 75 percent of total production, follows the soybean harvest. With a timely soybean season this year, the expectation is for a timely *safrinha* planting in contrast to the delayed planting and dismal crop last year. Farmers are anxious to plant the *safrinha* crop on time as this improves the likelihood of a normal yield outcome, specifically in Mato Grosso where the rainy season typically ends in mid to late April. Currently, planting stands at 15 percent nationally with the state of Mato Grosso (45 percent of second-crop production) setting a brisk pace in January, 12 percent ahead of the 5-year average. Weather conditions are favorable for planting in the center-west and the south, where rains returned mid-January in Paraná (15 percent of *safrinha* production). (For more information, please contact Sunita.Yadav-Pauletti@usda.gov.)

Philippines Corn: Record Quarter Four Output Increases Estimated Production

USDA estimates Philippines corn production for marketing year (MY) 2021/22 at 8.1 million metric tons, up 4 percent from last month, but down 3 percent from last year. Harvested area is estimated at 2.6 million hectares, up 4 percent from last month and 1 percent from last year. Yield is estimated at 3.12 tons per hectare, unchanged from last month, but down 4 percent from last year.

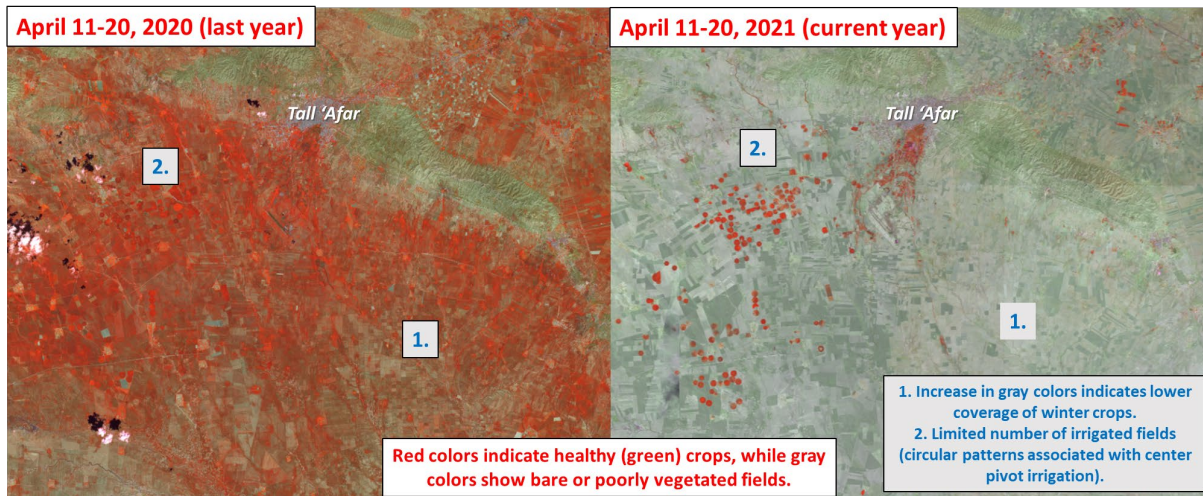


Philippines reports corn output on a quarterly basis. The USDA marketing year begins with quarter three, July through September, and represents the largest quarterly output. The MY 2021/22 corn campaign began with uncertainty after quarter three output and area was reported by the Philippine Statistical Authority (PSA) at 19 percent and 12 percent lower than last year, respectively. The declines in quarter three were primarily due to farmers shifting to more profitable crops and the lack of widespread adoption of quality seed. Conversely, quarter four corn output resulted in higher-than-expected estimates. PSA quarter four corn output and area were 29 percent and 18 percent above last year, respectively. According to the Philippines Department of Agriculture, record corn output in quarter four was achieved due to government support and extension services, which enhanced farm management practices. Harvest for quarter one began in January and ends in March. Quarter two harvest begins in April and ends in June. *(For more information, please contact Justin.Jenkins@usda.gov.)*

Iraq Wheat: Production Down Due to Widespread Crop Damage Caused by Water Scarcity

USDA estimates Iraq wheat production for marketing year (MY) 2021/22 at 3.5 million metric tons (mmt), down 24 percent from last year and 22 percent from last month. Yield is estimated at 1.75 metric tons per hectare, down 9 percent from last year. Harvested area is estimated at 2.0 million hectares, down 17 percent from last year and 20 percent from last month. This is also supported by the Iraqi's Central Statistical Organization (CSO), which reports 74 percent of wheat damaged area in Nīnawá alone. CSO's crop statistics, however, do not reflect the whole country.

Agricultural area near Tall 'Afar in the Nīnawá Governorate, northwestern Iraq



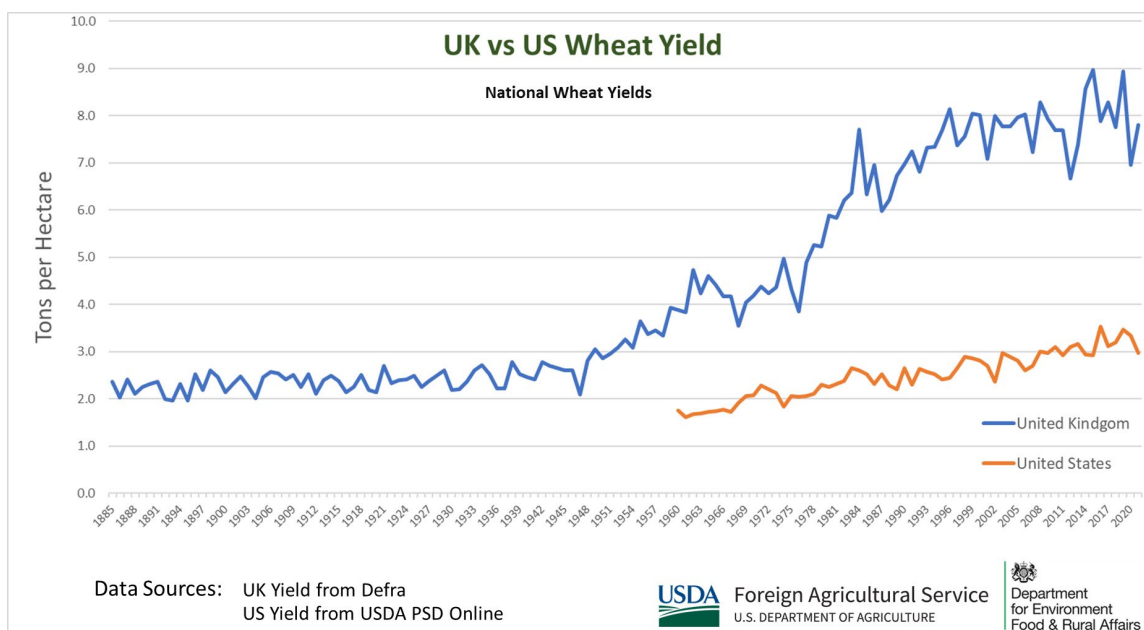
Source: GDA Corp, GeoChronicles (Sentinel-2/Landsat-8 10-day composite) 10-meter resolution imagery



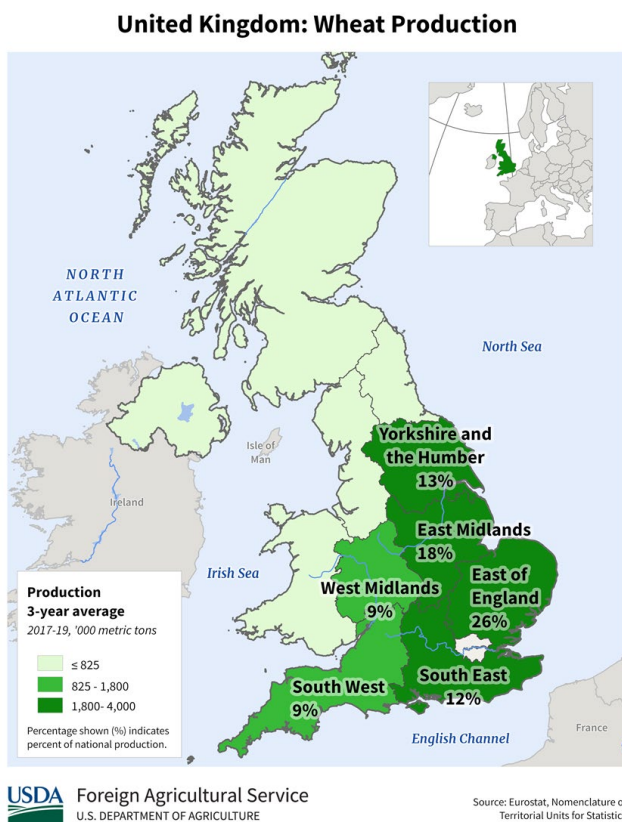
Iraq is the third largest wheat producer in the Middle East with an average production of 4.1 mmt (based on the MY 2016/17-2020/21 5-year average). The key wheat producing area for Iraq is northern Iraq. This includes the governorates of Nīnawá, Arbīl, Dahūk, As Sulaymānīyah, and At Ta'mīm. Wheat is typically planted in November and harvested between May and June.

The 2020-2021 wheat growing season (MY 2021/22) was hampered by extensive drought, which spread across the entire Middle East. The below average precipitation that lasted during the whole growing season not only resulted in persistent suboptimal soil moisture conditions, but also substantially limited the availability of irrigation water. This excessive water scarcity hindered yields and caused vast crop damage in the key wheat producing governorates. Satellite imagery shows poor vegetation status and much lower crop coverage compared to last season. *(For more information, please contact Iliana.Mladenova@usda.gov.)*

UK Wheat: Production Revised due to Official Data



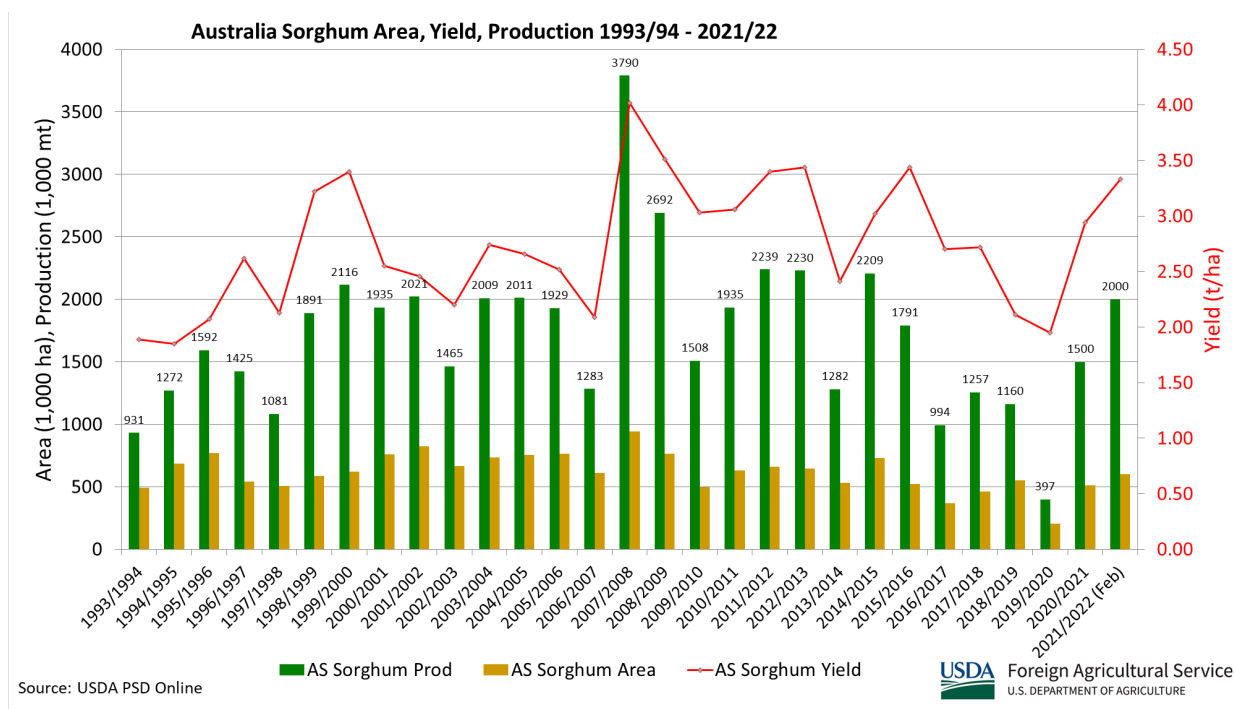
USDA estimates United Kingdom (UK) wheat production for marketing year (MY) 2021/22 at 14.0 million metric tons (mmt), down 0.3 mmt (2 percent) from last month, but up 4.3 mmt (45 percent) from last year's small crop. The MY 2021/22 crop is 3 percent above the 5-year average. Harvested area is estimated at 1.8 million hectares (mha), unchanged from last month, but up 0.4 mha (29 percent) from last year when excessive rains inhibited plantings. Yield is estimated at 7.82 tons per hectare, down 2 percent from last month and 1 percent from the 5-year average, but up 12 percent from last year.



USDA is adopting (and slightly rounding) the wheat estimates from the UK's Department for Environment, Food, and Rural Affairs (Defra). The revised 14.0 mmt production estimate is lower than other reported sources because it factors in a reduction for last year's wet and delayed harvest. Defra standardizes all moisture contents to 14.5 percent to ensure production estimates are comparable. The result is lower total output. (For more information, please contact Bryan.Purcell@usda.gov.)

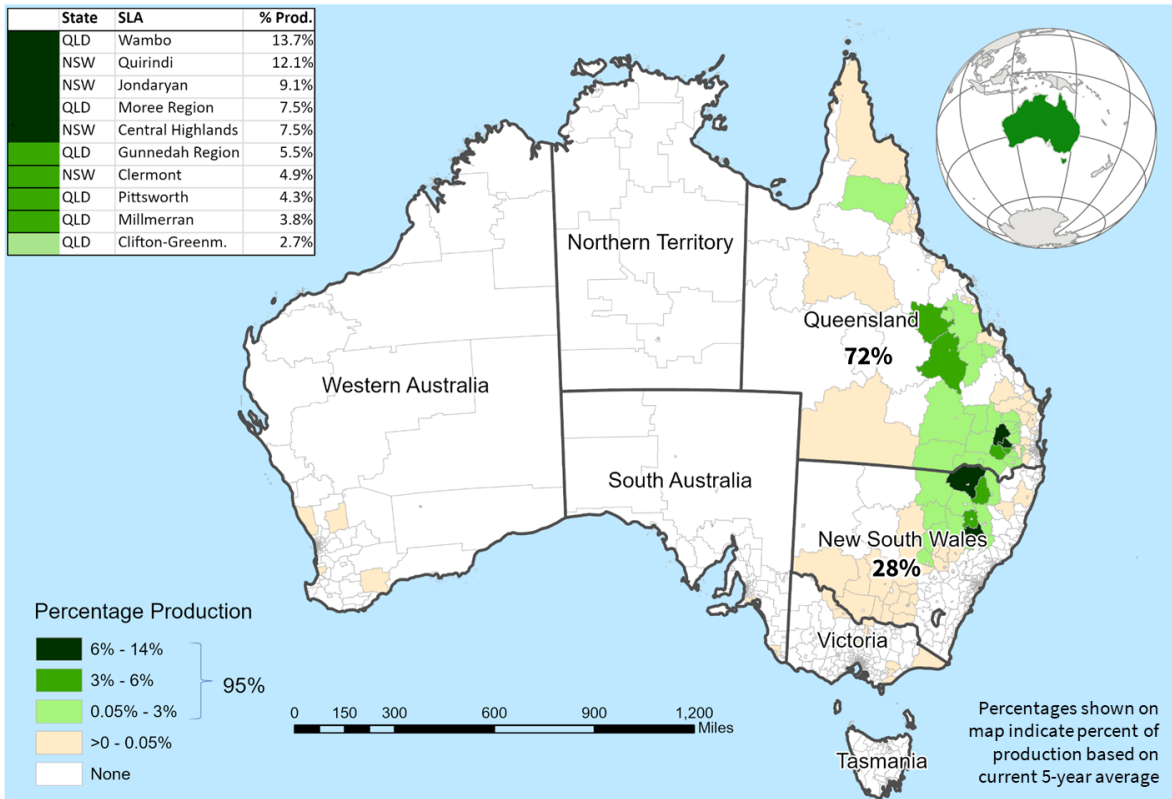
Australia Sorghum: Production Revised Higher on Area and Yield

USDA estimates Australia marketing year 2021/22 sorghum production at 2.0 million metric tons (mmt), up 0.1 mmt or 5 percent from last month, and up 0.5 mmt or 33 percent from last year. Area is estimated at 0.6 million hectares (mha), up 0.02 mha from last month, and up 0.09 mha or 18 percent from last year. Yield is estimated at 3.33 tons per hectare, up 2 percent from last month and 34 percent above the 5-year average.



The area planted to sorghum increased this season as prices favored sorghum relative to some other summer crops. In the main producing state of Queensland, above-average precipitation during October into November supported the germination and establishment of early sown sorghum and led to additional sorghum acres. The production revision is a result of favorable weather conditions driving increases in area and yield in nearly all portions of the sorghum belt.

Australia: Sorghum Production

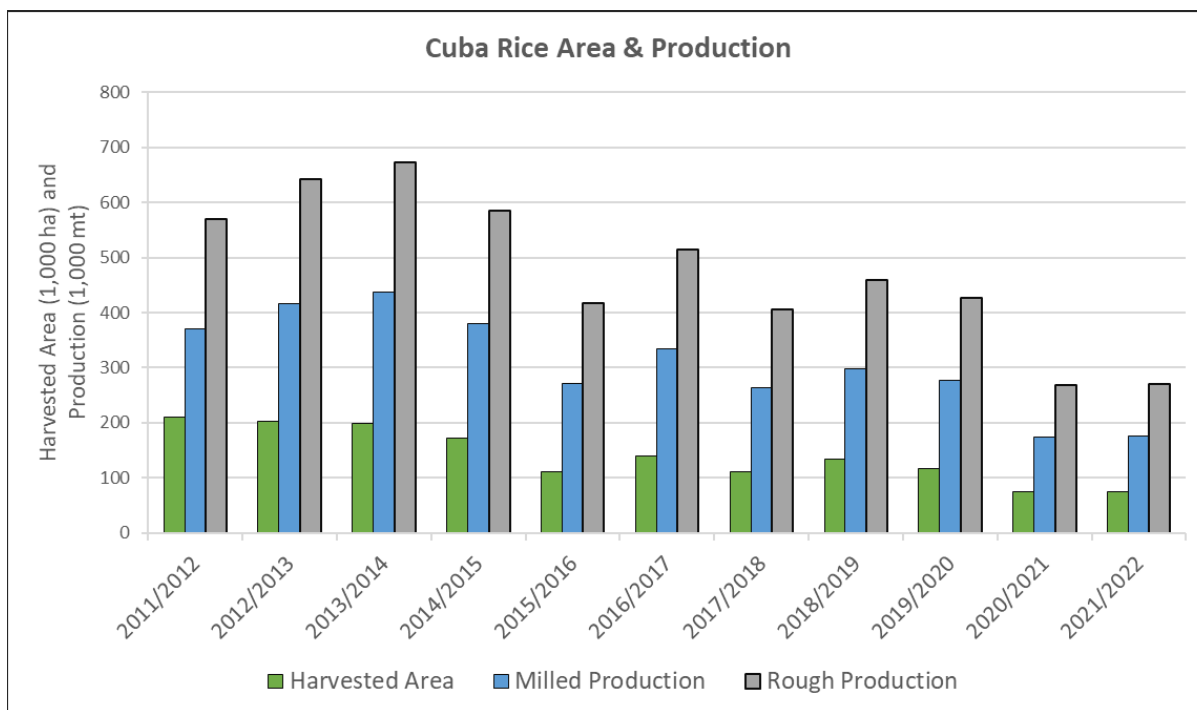


USDA Foreign Agricultural Service
U.S. DEPARTMENT OF AGRICULTURE

Data Source: ABS Ag Census with 2016 SLA boundaries (SA2)
Average percent production of 2005/06, 2010/11 and 2015/16

Sorghum production is concentrated in two eastern states. Queensland produces the bulk of Australia's sorghum with 72 percent (5-year average) and New South Wales accounts for the remaining 28 percent. (For more information, please contact James.Crutchfield@usda.gov.)

Cuba Rice: Production Revised Down on Lower Area



USDA Foreign Agricultural Service
U.S. DEPARTMENT OF AGRICULTURE

Source: USDA PSD Online

USDA estimates Cuba rice production for marketing year (MY) 2021/22 at 176,000 metric tons (milled basis), down 16 percent from last month and 35 percent below the 5-year average. Harvested area is estimated at 75,000 hectares, down 17 percent from last month and 35 percent below the 5-year average. Yield is estimated at 3.61 tons per hectare, roughly equivalent to last month and less than 1 percent above the 5-year average.

Cuba Rice Harvested Area, Production, and Yield Updates

Production (thousand metric tons)					
Marketing Year	Previous Milled Production	New Milled Production	% change	Previous Rough Production	New Rough Production
2019/20	247	277	+12.15%	380	426
2020/21	210	174	-17.14%	323	268
2021/22	210	176	-16.19%	323	269

Harvested Area Changes (thousand hectares)				Rough Yield (metric tons per hectare)			
Marketing Year	Previous Area	New Area	% change	Marketing Year	Previous Yield	New Yield	% change
2019/20	106	117	+10.38%	2019/20	3.58	3.64	+1.56%
2020/21	90	75	-16.67%	2020/21	3.59	3.57	-0.43%
2021/22	90	75	-16.67%	2021/22	3.59	3.61	+0.68%

USDA Foreign Agricultural Service
U.S. DEPARTMENT OF AGRICULTURE

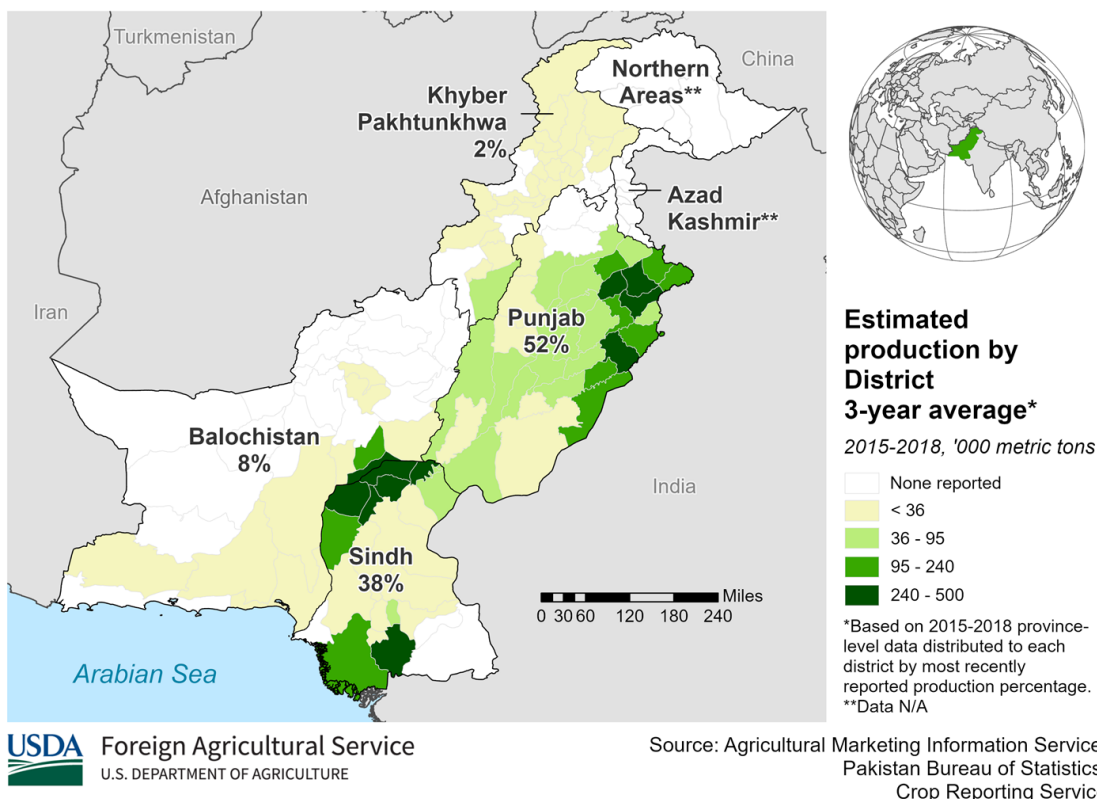
Source: USDA PSD Online

USDA has revised its harvested area and production estimates for Cuba rice, for several marketing years, based on information recently published by the *Oficina Nacional de Estadísticas e Información de la República de Cuba* (ONEI). Revisions included 10 and 12 percent increases, respectively, for area and production for MY 2019/20, and 17 percent reductions for both area and production for MY 2020/21. These sharp reductions for MY 2020/21 fall on the heels of a near decade-long downward trend in rice production, as well as the economic losses and nationwide shortages of fuel and fertilizer in the wake of the COVID-19 pandemic. Agricultural and economic reforms announced early in 2021, aiming to boost output for crops such as rice, have been met with a tepid response among farmers, who have found rice farming to be generally unprofitable. Within this context, and the slow recovery from the pandemic, USDA expects rice production to remain at low levels for the current season (MY 2021/22). (For more information, please contact Aaron.Mulhollen@usda.gov.)

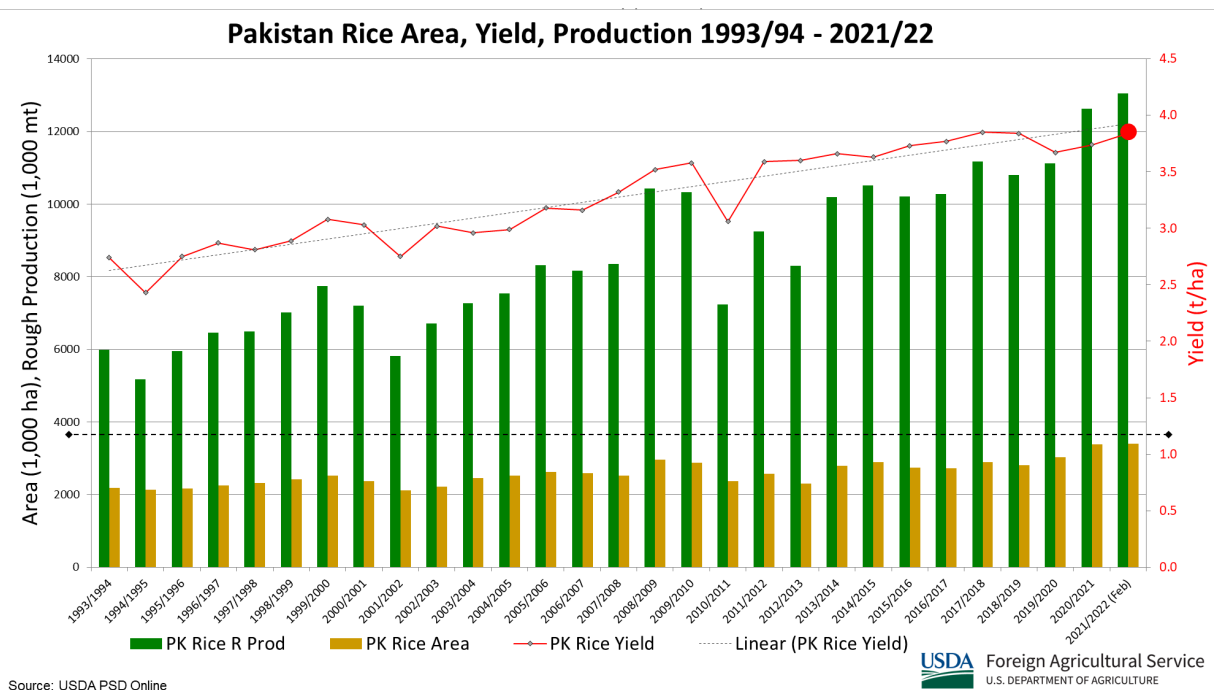
Pakistan Rice: Record Production Achieved

Pakistan rice production for marketing year (MY) 2021/22 is estimated at a record 8.7 million metric tons (mmt) (milled basis), up 0.5 mmt (6 percent) from last month, and up 0.3 mmt (3 percent) from last season's record crop. Harvested area is estimated at a record 3.4 million hectares (mha), up 0.2 mha (1 percent) from last season's record area. Yield is estimated at 3.84 tons per hectare, 3 percent above last month and last season.

Pakistan: Rice Production



The Government of Pakistan's (GOP) preliminary estimate for MY 2021/22 rice production increased from 8.2 mmt to a record 8.7 mmt. The main factors driving the increased production are the introduction of new, higher yielding hybrid rice varieties, improved agronomic practices, and increased planting area as farmers shift out of cotton and into rice and corn. The GOP's policy of ensuring rice growers had adequate inputs, which drove higher yields, also contributed to the record production. Harvest was completed in December in Punjab.

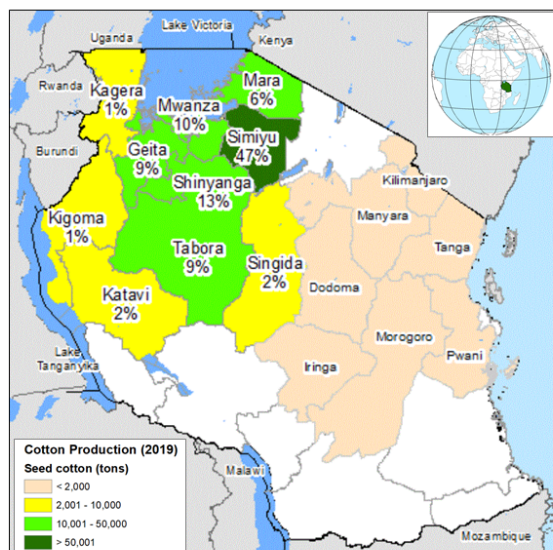


Pakistan is a leading producer and exporter of Basmati and IRRI rice (white long grain rice). Rice ranks second among the staple food grain crops in Pakistan and exports are a major source of foreign exchange earnings. Pakistan has two major rice-producing provinces: Punjab and Sindh. Both provinces account for nearly 90 percent of total rice production. Punjab, due to its suitable agro-climatic and soil conditions, produces 100 percent of the Basmati rice in the country. (For more information, please contact James.Crutchfield@usda.gov.)

Tanzania Cotton: Reported Lint Production Greater Than Last Year

Tanzania marketing year (MY) 2021/22 cotton production is estimated at 255,000 480-lb bales, down 345,000 bales (58 percent) from last month, but up 40,000 bales (19 percent) from last year. Yield is estimated at 231 kilograms of lint per hectare, up 6 percent from last month, down 19 percent from last year, but up 8 percent from the 5-year average. Harvested cotton area is estimated at 240,000 hectares, down 360,000 hectares (60 percent) from last month, but up 75,000 hectares (45 percent) from last year. According to harvest reports from the Tanzania Cotton Board (TCB), productivity is constrained from low utilization of inputs due to lack of adequate credit, inadequate extension services, low adoption of new technologies, and low level of mechanization.

Tanzania Cotton Production

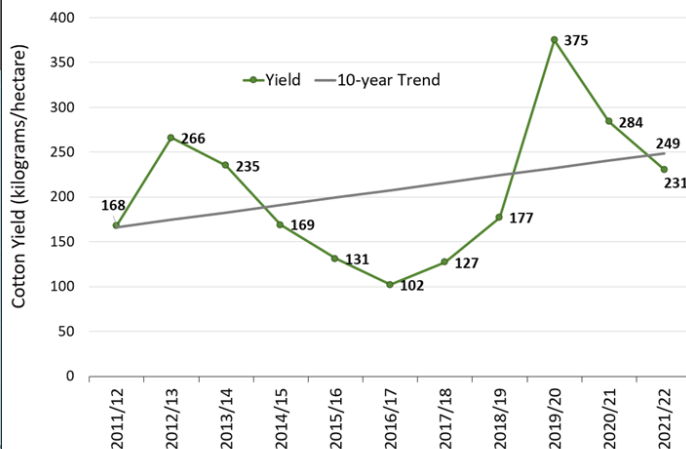


Source: Tanzania Cotton Board (TCB), Seed Cotton Production by Region, 2019

USDA Foreign Agricultural Service
U.S. DEPARTMENT OF AGRICULTURE

Tanzania Cotton Yields

(kilograms of lint per hectare)



Source: USDA PSD Online

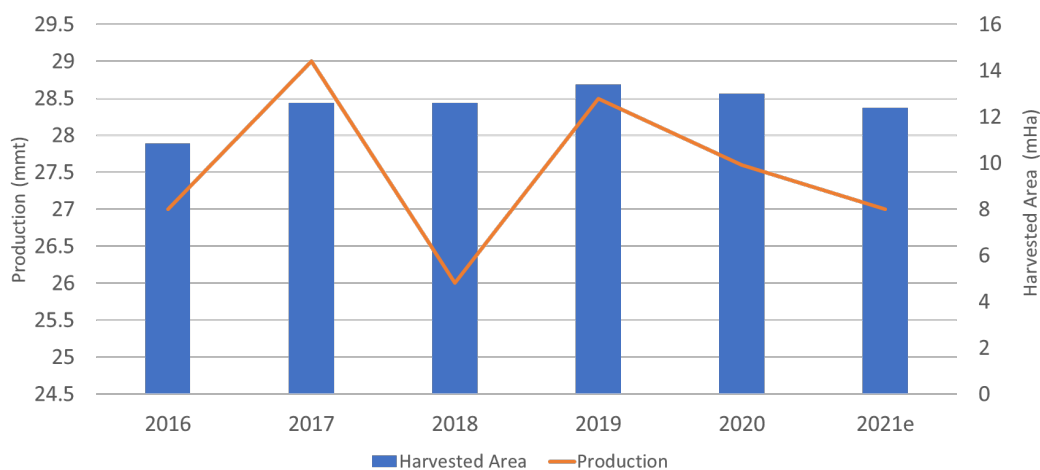
Cotton is generally planted from November through January and harvested from June through September. TCB reported that 30 ginning companies with 38 ginneries were in operation to gin this year's crop and final output was greater than last year. Gin operations were also completed by December and Tanzania typically exports between 75 to 80 percent of its total production depending on the size of the crop.

Nearly 99 percent of Tanzania's cotton is grown in the northwest, near Lake Victoria, with top producing regions being Simiyu (47 percent), Shinyanga (13 percent), Mwanza (10 percent), Geita (9 percent), Tabora (9 percent), and Mara (6 percent). Cotton is primarily produced by approximately 400,000 small landholders and typical farm sizes range from 0.5 to 5 hectares. *(For more information, please contact Curt.Reynolds@usda.gov.)*

India Cotton: Harvested Area Down due to Crop Damage

USDA estimated cotton production for marketing year (MY) 2021/22 at 27.0 million 480-pound bales, down 2 percent from last month and last year. Harvested area is estimated at 12.4 million hectares, unchanged from last month, but down nearly 5 percent from last year. The downward area revisions year-to-year were due to crop damaged from the late withdrawal of rains in October and pink bollworm incidences in northern India. The Cotton Corporation of India reported on January 31, 2022, that cotton arrivals were down marginally from the 5-year average. This marginal decrease in arrivals implies a lower MY 2021/22 production. Yields are estimated to reach 474 kilograms per hectare, down 2 percent from last month, but up nearly 3 percent from last year.

MY 2021/22 India's Cotton Production Down Due to a Drop in Harvested Area




 Foreign Agricultural Service
 U.S. DEPARTMENT OF AGRICULTURE

Source: USDA PSD Online

The main cotton harvest was completed in November; however, additional pickings of cotton ended in January. Cotton is grown only in the *kharif* season from May to October. (For more information, please contact Arnella.Trent@usda.gov.)



World Agricultural Production
U.S. Department of Agriculture

Foreign Agricultural Service / Global Market Analysis
 International Production Assessment Division (IPAD)

Ag Box 1051, Room 4630, South Building
 Washington, DC 20250-1051

<https://ipad.fas.usda.gov/>

Telephone: (202) 720-1662 Fax: (202) 720-1158

This report uses information from the Foreign Agricultural Service’s (FAS) global network of agricultural attachés and counselors, official statistics of foreign governments and other foreign source materials, and the analysis of economic data and satellite imagery. Estimates of foreign area, yield, and production are from the International Production Assessment Division, FAS, and are reviewed by USDA’s Inter-Agency Commodity Estimates Committee. Estimates of U.S. area, yield, and production are from USDA’s National Agricultural Statistics Service. Numbers within the report may not add to totals because of rounding. This report reflects official USDA estimates released in the World Agricultural Supply and Demand Estimates (WASDE-584), February 9, 2022.

Printed copies are available from the National Technical Information Service. Download an order form at http://www.ntis.gov/products/specialty/usda/fas_a-g.asp, or call NTIS at 1-800-363-2068.

The FAS International Production Assessment Division prepared this report. The next issue of World Agricultural Production will be released after 12:00 p.m. Eastern Time, March 9, 2022.

Conversion Table

Metric tons to bushels

Wheat, soybeans	=	MT * 36.7437
Corn, sorghum, rye	=	MT * 39.36825
Barley	=	MT * 45.929625
Oats	=	MT * 68.894438

Metric tons to 480-lb bales

Cotton	=	MT * 4.592917
--------	---	---------------

Metric tons to hundredweight

Rice	=	MT * 22.04622
------	---	---------------

Area & weight

1 hectare	=	2.471044 acres
1 kilogram	=	2.204622 pounds



For further information, contact:
U.S. Department of Agriculture
Foreign Agricultural Service
Global Market Analysis

International Production Assessment Division
 Ag Box 1051, Room 4630, South Building
 Washington, DC 20250-1051

Telephone: (202) 720-1662

Fax: (202) 720-1158

GENERAL INFORMATION

Senior Director	Ronald Frantz	202-720-4056	ronald.frantz@usda.gov
Director	Robert Tetrault	202-720-1071	robert.tetrault@usda.gov
Administrative Assistant	Vacant		
USDA Remote Sensing Advisor	Vacant		
Sr. Analyst/Technical Lead	Curt Reynolds, Ph.D.	202-690-0134	curt.reynolds@usda.gov
Sr. Analyst/ Satellite Imagery Archives Manager/Technical Lead	Dath Mita, Ph.D.	202-720-7339	dath.mita@usda.gov
Sr. Analyst/Technical Lead	Jim Crutchfield	202-690-0135	james.crutchfield@usda.gov
GIS Mapping/Imagery Analyst	Lisa Colson	202-720-6652	lisa.colson@usda.gov
WAP Coordinators	Ifeoma Collins	202-720-0240	ifeoma.collins@usda.gov
	Aaron Mulhollen	202-690-0131	aaron.mulhollen@usda.gov

COUNTRY- AND REGION-SPECIFIC INFORMATION

South America, Argentina, Venezuela, and Colombia	Denise McWilliams, Ph.D.	202-720-0107	denise.mcwilliams@usda.gov
Western and Central Europe, and North Africa	Bryan Purcell	202-690-0138	bryan.purcell@usda.gov
Russia, Ukraine, Kazakhstan, Moldova, and Belarus	Katie McGaughey	202-720-9210	katie.mcgaughey@usda.gov
South Asia, Sri Lanka Bangladesh, India, and Nepal	Arnella Trent	202-720-0881	arnella.trent@usda.gov
East Asia, China, and Japan	Dath Mita, Ph.D.	202-720-7339	dath.mita@usda.gov
Sub-Saharan Africa, Nigeria and South Africa	Curt Reynolds, Ph.D.	202-690-0134	curt.reynolds@usda.gov
S.E. Asia, Indonesia, Thailand, Malaysia, Cambodia and Vietnam	Justin Jenkins	202-720-0419	justin.jenkins@usda.gov
Central America, Mexico, and Western United States	Ifeoma Collins	202-720-0240	ifeoma.collins@usda.gov
Australia, New Zealand, Pakistan Papua New Guinea and South Pacific Islands	Jim Crutchfield	202-690-0135	james.crutchfield@usda.gov
Middle East, Central Asia, Afghanistan Iraq, Iran, and Syria	Iliana Mladenova, Ph.D.	202-235-7562	iliana.mladenova@usda.gov
Canada, Caribbean, Eastern United States	Aaron Mulhollen	202-690-0131	aaron.mulhollen@usda.gov
Brazil	Sunita Yadav-Pauletti, Ph.D.		sunita.yadav-pauletti@usda.gov



The Foreign Agricultural Service (FAS) updates its production, supply and distribution (PSD) database for cotton, oilseeds, and grains at 12:00 p.m. on the day the *World Agricultural Supply and Demand Estimates* (WASDE) report is released. This circular is released by 12:15 p.m.

FAS Reports and Databases:

World Agricultural Production

Current: <https://www.fas.usda.gov/data/world-agricultural-production>

Archive: <https://usda.library.cornell.edu/concern/publications/5q47rn72z?locale=en>

USDA's Foreign Agricultural Service (FAS) publishes a monthly report on crop acreage, yield and production in major countries worldwide. Sources include reporting from FAS's worldwide offices, official statistics of foreign governments, and analysis of economic data and satellite imagery. The reports reflect official USDA estimates released in the monthly *World Agricultural Supply and Demand Estimates* (WASDE).

World Markets and Trade

Current: <https://www.fas.usda.gov/data>

Archive:

https://usda.library.cornell.edu/catalog?f%5Bmember_of_collections_ssim%5D%5B%5D=Foreign+Agricultural+Service&locale=en

USDA's Foreign Agricultural Service (FAS) publishes monthly and quarterly reports which include data on U.S. and global trade, production, consumption and stocks, as well as analysis of developments affecting world trade in oilseeds, grains, cotton, livestock and poultry. The reports reflect official USDA estimates released in the monthly *World Agricultural Supply and Demand Estimates* (WASDE).

Global Agricultural Information Network (GAIN)

<https://www.fas.usda.gov/databases/global-agricultural-information-network-gain>

USDA's Foreign Agricultural Service (FAS) provides timely reports on foreign markets through the Global Agriculture Information Network (GAIN) database. An average of 2,000 reports are added each year, with reports going back to 1995. GAIN reports are compiled by FAS' global market intelligence network, which includes FAS foreign service officers and locally engaged staff in over 90 overseas offices world-wide. They provide on-the-ground intelligence, insight, and analysis on nearly 200 countries, delivering information on foreign agricultural markets, crop conditions, and agro-political dynamics of interest to U.S. agriculture. GAIN reports contain assessments of commodity and trade issues made by USDA staff and are not necessarily statements of official U.S. government policy.

Production, Supply and Distribution (PS&D) Online

<https://apps.fas.usda.gov/psdonline/app/index.html#/app/home>

PSD Online is the public repository for USDA's Official Production, Supply and Distribution forecast data and reports for key agricultural commodities. PSD Online data are reviewed and updated monthly by an interagency committee chaired by USDA's World Agricultural Outlook Board (WAOB). The committee consist of representatives from Foreign Agricultural Service (FAS), the Economic Research Service (ERS), the Farm Service Agency (FSA), and the Agricultural Marketing Service (AMS).

EU Countries and Russia Wheat: Area and Production Estimates

<https://apps.fas.usda.gov/psdonline/app/index.html#/app/downloads> (click on PSD Datasets)

USDA's Foreign Agricultural Service (FAS) provides country-level area and production estimates for the nations of the European Union. For Russia, country-level area and production estimates are provided for Winter and Spring wheat. These datasets are reviewed and updated monthly by an interagency committee chaired by USDA's World Agricultural Outlook Board (WAOB) and can be downloaded through PSD datasets on PSD Online.



FAS Reports and Databases:

International Production Assessment (IPAD)

<https://ipad.fas.usda.gov/>

USDA's Foreign Agricultural Service (FAS) maintains a dynamic global crop production portal with key information including *World Agricultural Production* (WAP) briefs, Commodity Intelligence Reports (CIR), geospatial applications, crop production maps at a subnational level and crop calendars for the top-20 producing countries. Additionally, Crop Explorer (<https://ipad.fas.usda.gov/cropexplorer/>) displays rainfall, temperature, evapotranspiration, soil moisture, snow cover, and vegetation conditions in charts and maps.

USDA and NASA Global Agricultural Monitoring (GLAM)

<https://glam1.gsfc.nasa.gov/>

The USDA and NASA Global Agricultural Monitoring (GLAM) system provides near real-time and science quality Moderate Resolution Imaging Spectroradiometer (MODIS) Normalized Difference Vegetation Index (NDVI) from the satellites Terra and Aqua. The public can view and retrieve MODIS 8-day composited, global NDVI satellite imagery and time series data. GLAM was developed by NASA's Global Inventory Modeling and Mapping Studies (GIMMS) group for USDA's Foreign Agricultural Service.

Global Agricultural and Disaster Assessment System (GADAS)

<https://geo.fas.usda.gov/GADAS/index.html>

USDA's Foreign Agricultural Service (FAS) provides the Global Agricultural and Disaster Assessment System (GADAS), a web-based Geographic Information System (GIS) tool which integrates a vast array of highly detailed earth observation data streams, particularly targeted towards agricultural and disaster assessment analysis. GADAS is an interactive website which provides analysts with a wide variety of routine geospatial products (maps, charts, tables) they require for comprehensive situational investigations and recurring assessments.

Export Sales Reporting

<https://apps.fas.usda.gov/esrquery/>

USDA's Export Sales Reporting Program monitors U.S. agricultural export sales on a daily and weekly basis. Export sales reporting provides a constant stream of up-to-date market information for 40 U.S. agricultural commodities sold abroad. The weekly U.S. Export Sales report is the most currently available source of U.S. exports sales data. The data is used to analyze overall levels of export demand, determine where markets exit, and assess the relative position of U.S. commodities in foreign markets.

Global Agricultural Trade System (GATS)

<https://apps.fas.usda.gov/gats/default.aspx>

The Global Agricultural Trade System (GATS) is a searchable database containing monthly U.S. Census Bureau trade data organized by agricultural commodity and agricultural related product groups. Trade data is searchable by partner countries and partner groups. Historical U.S. agricultural trade data is available back to 1967. In addition, U.N. trade statistics (UN Comtrade) may be queried through GATS. UN trade data is available for nearly 200 countries or areas, dating from the inception of the Harmonized System (HS) of trade codes in 1989 to present. The database is continuously updated. U.S. trade data is updated monthly according to the U.S. Census Bureau's reporting system. UN Comtrade data are updated in GATS after nationally submitted data to the UN are standardized by the UN Statistical Division and added to the UN Comtrade database.

Other USDA Reports:

World Agricultural Supply and Demand Estimates (WASDE):

<http://www.usda.gov/oce/commodity/wasde/>

Economic Research Service:

<http://www.ers.usda.gov/topics/crops>

National Agricultural Statistics Service:

<http://www.nass.usda.gov/Publications/>

Table 01 World Crop Production Summary

Million Metric Tons

Commodity	World	Total Foreign	North America			Former Soviet		European	Asia (WAP)					South America		Selected Other			All Others
			United States	Canada	Mexico	Russia	Ukraine		China	India	Indonesia	Pakistan	Thailand	Argentina	Brazil	Australia	South Africa	Turkey	
			-	-	-	-	-		-	-	-	-	-	-	-	-	-	-	
---Million metric tons---																			
Wheat																			
2019/20	762.2	709.6	52.6	32.7	3.3	73.6	29.2	nr	133.6	103.6	0.0	24.3	0.0	19.8	5.2	14.5	1.5	17.5	250.9
2020/21 prel.	775.9	726.1	49.8	35.2	3.0	85.4	25.4	nr	134.3	107.9	0.0	24.9	0.0	17.6	6.3	33.3	2.1	18.3	232.6
2021/22 proj.																			
Jan	778.6	733.8	44.8	21.7	3.3	75.5	33.0	nr	136.9	109.5	0.0	27.0	0.0	20.5	7.8	34.0	2.2	16.3	246.2
Feb	776.4	731.6	44.8	21.7	3.3	75.5	33.0	nr	136.9	109.5	0.0	27.0	0.0	20.5	7.7	34.0	2.2	16.3	244.1
Coarse Grains																			
2019/20	1,417.1	1,057.6	359.4	28.6	32.1	40.5	46.5	nr	269.1	47.7	12.0	7.7	4.6	57.9	105.8	12.0	16.4	14.5	362.3
2020/21 prel.	1,433.8	1,060.9	372.9	29.6	32.7	41.4	39.6	nr	269.1	51.2	11.8	8.3	5.7	59.5	91.0	16.7	17.8	15.8	370.9
2021/22 proj.																			
Jan	1,500.0	1,101.3	398.7	24.2	33.4	38.3	53.6	nr	280.9	47.6	12.0	8.1	5.4	63.4	119.0	16.9	17.6	11.6	369.4
Feb	1,497.4	1,098.6	398.7	24.2	33.4	38.3	53.6	nr	280.9	47.6	12.0	8.1	5.4	63.4	118.0	17.0	17.6	11.6	367.7
Rice, Milled																			
2019/20	498.9	493.0	5.9	0.0	0.2	0.7	0.0	nr	146.7	118.9	34.7	7.4	17.7	0.8	7.6	0.0	0.0	0.6	157.7
2020/21 prel.	507.5	500.2	7.2	0.0	0.2	0.7	0.0	nr	148.3	122.3	35.3	8.4	18.9	0.8	8.0	0.3	0.0	0.6	156.3
2021/22 proj.																			
Jan	509.9	503.8	6.1	0.0	0.2	0.7	0.0	nr	149.0	125.0	35.4	8.2	19.3	0.8	8.0	0.7	0.0	0.5	155.9
Feb	510.3	504.2	6.1	0.0	0.2	0.7	0.0	nr	149.0	125.0	35.4	8.7	19.3	0.8	7.7	0.7	0.0	0.5	156.2
Total Grains																			
2019/20	2,678.1	2,260.2	417.9	61.3	35.5	114.8	75.8	nr	549.4	270.1	46.7	39.5	22.2	78.5	118.6	26.5	17.9	32.6	770.8
2020/21 prel.	2,717.1	2,287.2	429.9	64.8	35.8	127.5	65.0	nr	551.6	281.3	47.1	41.7	24.5	78.0	105.2	50.3	19.9	34.6	759.8
2021/22 proj.																			
Jan	2,788.5	2,338.9	449.6	45.9	36.8	114.5	86.6	nr	566.8	282.1	47.4	43.3	24.7	84.7	134.8	51.6	19.8	28.4	771.5
Feb	2,784.1	2,334.5	449.6	45.9	36.8	114.5	86.6	nr	566.8	282.1	47.4	43.8	24.7	84.7	133.4	51.7	19.8	28.4	767.9
Oilseeds																			
2019/20	581.0	474.0	107.0	26.1	0.9	21.7	24.5	nr	62.4	36.0	14.4	3.5	0.9	53.6	133.9	2.5	2.2	3.3	88.1
2020/21 prel.	603.6	479.1	124.5	25.9	0.8	20.1	19.9	nr	65.6	38.3	14.6	2.7	1.0	51.2	142.4	5.4	2.7	2.9	85.7
2021/22 proj.																			
Jan	619.2	488.6	130.6	19.0	0.8	23.1	24.3	nr	62.1	40.9	14.8	3.2	1.0	51.7	144.3	7.2	2.8	3.4	90.2
Feb	611.5	480.9	130.6	19.0	0.8	23.1	24.3	nr	62.1	42.0	14.8	3.2	1.0	50.2	139.3	7.2	2.8	3.4	87.8
Cotton																			
2019/20	121.0	101.1	19.9	0.0	1.6	0.0	0.0	2.0	27.3	28.5	0.0	6.2	0.0	1.3	13.8	0.6	0.1	3.5	16.3
2020/21 prel.	111.8	97.2	14.6	0.0	1.0	0.0	0.0	1.7	29.5	27.6	0.0	4.5	0.0	1.4	10.8	2.8	0.1	2.9	14.9
2021/22 proj.																			
Jan	121.0	103.3	17.6	0.0	1.1	0.0	0.0	1.5	27.0	27.5	0.0	5.8	0.0	1.5	13.2	5.5	0.1	3.8	16.5
Feb	120.2	102.5	17.6	0.0	1.1	0.0	0.0	1.5	27.0	27.0	0.0	5.8	0.0	1.5	13.2	5.5	0.1	3.8	16.2

1/ Includes wheat, coarse grains, and rice (milled) shown above.

Table 02 Wheat Area, Yield, and Production

Country / Region	Area (Million hectares)				Yield (Metric tons per hectare)				Production (Million metric tons)				Change in Production			
	2019/20	Prel.	2021/22 Proj.		2019/20	Prel.	2021/22 Proj.		2019/20	Prel.	2021/22 Proj.		From last month		From last year	
		2020/21	Jan	Feb		2020/21	Jan	Feb		2020/21	Jan	Feb	MMT	Percent	MMT	Percent
World	215.53	220.88	223.40	222.62	3.54	3.51	3.49	3.49	762.17	775.87	778.60	776.42	-2.18	-0.28	0.55	0.07
United States	15.13	14.89	15.04	15.04	3.47	3.34	2.98	2.98	52.58	49.75	44.79	44.79	0.00	0.00	-4.96	-9.97
Total Foreign	200.39	206.00	208.36	207.58	3.54	3.52	3.52	3.52	709.59	726.12	733.81	731.63	-2.18	-0.30	5.51	0.76
European Union	24.36	22.97	24.14	24.14	5.70	5.53	5.76	5.76	138.80	126.93	138.90	138.90	0.00	0.00	11.97	9.43
United Kingdom	1.80	1.39	1.79	1.79	8.69	6.96	7.99	7.82	15.60	9.66	14.30	14.00	-0.30	-2.10	4.34	44.96
Serbia	0.57	0.59	0.60	0.60	4.56	4.58	5.50	5.50	2.60	2.70	3.30	3.30	0.00	0.00	0.60	22.22
China	23.73	23.38	23.57	23.57	5.63	5.74	5.81	5.81	133.60	134.25	136.95	136.95	0.00	0.00	2.70	2.01
South Asia																
India	29.32	31.36	31.62	31.62	3.53	3.44	3.46	3.46	103.60	107.86	109.52	109.52	0.00	0.00	1.66	1.54
Pakistan	8.68	8.83	9.20	9.20	2.81	2.83	2.93	2.93	24.35	24.95	27.00	27.00	0.00	0.00	2.05	8.23
Afghanistan	2.30	2.33	2.20	2.20	2.17	2.15	2.00	2.00	5.00	5.01	4.40	4.40	0.00	0.00	-0.61	-12.18
Nepal	0.71	0.75	0.75	0.75	3.09	2.95	2.80	2.80	2.19	2.21	2.10	2.10	0.00	0.00	-0.11	-4.98
Former Soviet Union - 12																
Russia	27.31	28.68	27.60	27.60	2.70	2.98	2.74	2.74	73.61	85.35	75.50	75.50	0.00	0.00	-9.85	-11.54
Russia Winter	15.41	16.63	15.00	15.00	3.41	3.77	3.50	3.50	52.54	62.69	52.50	52.50	0.00	0.00	-10.19	-16.25
Russia Spring	11.91	12.06	12.60	12.60	1.77	1.88	1.83	1.83	21.07	22.67	23.00	23.00	0.00	0.00	0.34	1.48
Ukraine	7.02	6.85	7.40	7.40	4.16	3.71	4.46	4.46	29.17	25.42	33.00	33.00	0.00	0.00	7.58	29.82
Kazakhstan	11.30	12.06	12.70	12.72	1.01	1.18	0.94	0.93	11.45	14.26	12.00	11.81	-0.19	-1.55	-2.44	-17.13
Uzbekistan	1.40	1.40	1.40	1.40	4.86	4.43	3.93	3.93	6.80	6.20	5.50	5.50	0.00	0.00	-0.70	-11.29
Belarus	0.69	0.72	0.65	0.65	3.33	3.94	3.54	3.54	2.31	2.85	2.30	2.30	0.00	0.00	-0.55	-19.24
Canada	9.66	10.02	9.25	9.25	3.38	3.51	2.34	2.34	32.67	35.18	21.65	21.65	0.00	0.00	-13.53	-38.46
South America																
Argentina	6.73	6.40	6.50	6.50	2.93	2.76	3.15	3.15	19.75	17.64	20.50	20.50	0.00	0.00	2.86	16.21
Brazil	2.04	2.34	2.72	2.74	2.55	2.67	2.87	2.81	5.20	6.25	7.80	7.70	-0.10	-1.28	1.45	23.20
Australia	9.86	12.90	13.10	13.10	1.47	2.58	2.60	2.60	14.48	33.30	34.00	34.00	0.00	0.00	0.70	2.10
Africa																
Egypt	1.37	1.39	1.40	1.40	6.40	6.40	6.43	6.43	8.77	8.90	9.00	9.00	0.00	0.00	0.10	1.12
Morocco	2.51	2.76	2.86	2.86	1.61	0.93	2.64	2.64	4.03	2.56	7.54	7.54	0.00	0.00	4.98	194.53
Algeria	2.07	2.08	2.08	2.08	1.90	1.88	1.73	1.73	3.95	3.90	3.60	3.60	0.00	0.00	-0.30	-7.69
Ethiopia	1.79	1.85	1.75	1.75	2.97	2.76	2.74	2.74	5.32	5.10	4.80	4.80	0.00	0.00	-0.30	-5.88
Middle East																
Turkey	7.00	7.10	7.05	7.05	2.50	2.57	2.30	2.30	17.50	18.25	16.25	16.25	0.00	0.00	-2.00	-10.96
Iran	6.20	6.00	6.00	6.00	2.51	2.50	2.00	2.00	15.55	15.00	12.00	12.00	0.00	0.00	-3.00	-20.00
Iraq	2.40	2.40	2.50	2.00	2.00	1.93	1.80	1.75	4.80	4.64	4.50	3.50	-1.00	-22.22	-1.14	-24.49
Syria	1.60	1.60	1.40	1.10	3.00	2.81	2.00	1.82	4.80	4.50	2.80	2.00	-0.80	-28.57	-2.50	-55.56
Mexico	0.59	0.56	0.55	0.55	5.54	5.33	5.95	5.95	3.27	2.97	3.28	3.28	0.00	0.00	0.31	10.46
Others	7.39	7.31	7.60	7.59	2.76	2.77	2.80	2.84	20.44	20.29	21.33	21.53	0.20	0.96	1.24	6.11

Table 03 Total Coarse Grain Area, Yield, and Production

Country / Region	Area (Million hectares)				Yield (Metric tons per hectare)				Production (Million metric tons)				Change in Production						
	2019/20	Prel.		2021/22 Proj.		2019/20	Prel.		2021/22 Proj.		2019/20	Prel.		2021/22 Proj.		From last month		From last year	
		2020/21	Jan	Feb	2020/21		Jan	Feb	2020/21	Jan		Feb	MMT	Percent	MMT	Percent			
World	334.52	343.99	340.61	339.53	4.24	4.17	4.40	4.41	1,417.08	1,433.77	1,500.05	1,497.36	-2.69	-0.18	63.59	4.43			
United States	36.17	36.81	38.35	38.35	9.94	10.13	10.40	10.40	359.43	372.89	398.71	398.71	0.00	0.00	25.82	6.92			
Total Foreign	298.35	307.18	302.26	301.18	3.54	3.45	3.64	3.65	1,057.65	1,060.88	1,101.34	1,098.65	-2.69	-0.24	37.77	3.56			
China	43.67	43.72	45.77	45.77	6.16	6.15	6.14	6.14	269.07	269.08	280.85	280.85	0.00	0.00	11.77	4.37			
European Union	28.76	28.83	28.00	28.03	5.31	5.38	5.53	5.53	152.82	155.21	154.80	154.95	0.15	0.10	-0.27	-0.17			
United Kingdom	1.41	1.66	1.41	1.41	6.64	5.65	6.03	5.89	9.35	9.36	8.53	8.33	-0.20	-2.35	-1.03	-11.03			
South America																			
Brazil	19.86	21.31	22.23	22.23	5.33	4.27	5.35	5.31	105.82	90.96	119.02	118.02	-1.00	-0.84	27.06	29.75			
Argentina	8.39	8.59	9.27	9.27	6.91	6.93	6.83	6.83	57.94	59.50	63.39	63.39	0.00	0.00	3.88	6.53			
Former Soviet Union - 12																			
Russia	14.51	14.55	13.85	13.85	2.79	2.84	2.77	2.77	40.50	41.40	38.31	38.31	0.00	0.00	-3.09	-7.45			
Ukraine	8.22	8.53	8.44	8.44	5.67	4.64	6.35	6.35	46.55	39.59	53.59	53.59	0.00	0.00	14.00	35.37			
Kazakhstan	3.45	3.20	2.67	2.63	1.47	1.54	1.45	1.43	5.06	4.93	3.88	3.76	-0.13	-3.22	-1.17	-23.79			
Belarus	1.08	1.14	0.99	0.99	3.08	3.47	3.05	3.05	3.32	3.95	3.00	3.00	0.00	0.00	-0.95	-23.99			
Africa																			
Nigeria	13.90	13.10	13.70	13.70	1.42	1.42	1.49	1.49	19.67	18.57	20.40	20.40	0.00	0.00	1.83	9.85			
South Africa	3.12	3.36	3.30	3.20	5.24	5.29	5.34	5.51	16.37	17.76	17.60	17.60	0.00	0.00	-0.16	-0.87			
Tanzania	4.35	5.20	5.10	5.10	1.56	1.46	1.49	1.49	6.77	7.58	7.58	7.58	0.00	0.00	0.00	0.00			
Burkina Faso	4.08	4.00	4.00	4.00	1.12	1.18	1.31	1.31	4.55	4.72	5.23	5.23	0.00	0.00	0.51	10.70			
Ethiopia	5.51	5.61	5.72	5.72	3.34	3.32	3.09	3.09	18.41	18.62	17.65	17.65	0.00	0.00	-0.97	-5.19			
Egypt	1.02	1.02	1.02	1.02	7.09	7.09	7.09	7.09	7.26	7.26	7.26	7.26	0.00	0.00	0.00	0.00			
Mali	4.92	5.17	4.70	4.70	1.46	1.38	1.45	1.45	7.21	7.14	6.80	6.80	0.00	0.00	-0.34	-4.70			
India	23.98	23.83	22.40	22.40	1.99	2.15	2.12	2.12	47.66	51.21	47.57	47.57	0.00	0.00	-3.64	-7.11			
Southeast Asia																			
Indonesia	3.80	3.60	3.60	3.60	3.16	3.28	3.33	3.33	12.00	11.80	12.00	12.00	0.00	0.00	0.20	1.69			
Philippines	2.51	2.57	2.50	2.60	3.20	3.25	3.12	3.12	8.03	8.35	7.80	8.10	0.30	3.85	-0.25	-3.02			
Vietnam	0.99	0.95	0.90	0.90	4.80	4.83	4.89	4.89	4.76	4.59	4.40	4.40	0.00	0.00	-0.19	-4.14			
Thailand	1.24	1.28	1.23	1.23	3.66	4.41	4.36	4.36	4.55	5.65	5.35	5.35	0.00	0.00	-0.30	-5.31			
Mexico	8.41	8.76	9.01	9.01	3.82	3.73	3.70	3.70	32.10	32.66	33.35	33.35	0.00	0.00	0.69	2.11			
Canada	5.54	5.80	5.74	5.74	5.16	5.11	4.22	4.22	28.61	29.64	24.21	24.21	0.00	0.00	-5.43	-18.32			
Australia	6.18	5.99	5.92	5.94	1.94	2.79	2.86	2.87	12.00	16.70	16.95	17.05	0.10	0.59	0.35	2.10			
Middle East																			
Turkey	4.53	4.63	4.46	4.46	3.19	3.40	2.60	2.60	14.45	15.76	11.58	11.58	0.00	0.00	-4.18	-26.52			
Iran	1.91	1.81	1.91	1.91	2.63	2.77	2.16	2.16	5.02	5.02	4.12	4.12	0.00	0.00	-0.90	-17.93			
Others	73.03	78.98	74.43	73.34	1.61	1.57	1.69	1.69	117.84	123.89	126.14	124.23	-1.92	-1.52	0.33	0.27			

World and Selected Countries and Regions; Coarse Grain includes: Barley, Corn, Millet, Mixed Grains, Oats, Rye and Sorghum

Table 04 Corn Area, Yield, and Production

Country / Region	Area (Million hectares)				Yield (Metric tons per hectare)				Production (Million metric tons)				Change in Production						
	2019/20	Prel.		2021/22 Proj.		2019/20	Prel.		2021/22 Proj.		2019/20	Prel.		2021/22 Proj.		From last month		From last year	
		2020/21	Jan	Feb	2020/21		Jan	Feb	2020/21	Jan		Feb	MMT	Percent	MMT	Percent			
World	193.56	198.75	202.82	202.72	5.78	5.65	5.95	5.95	1,119.59	1,123.07	1,206.96	1,205.35	-1.62	-0.13	82.27	7.33			
United States	32.92	33.31	34.56	34.56	10.51	10.76	11.11	11.11	345.96	358.45	383.94	383.94	0.00	0.00	25.50	7.11			
Total Foreign	160.65	165.44	168.27	168.16	4.82	4.62	4.89	4.88	773.63	764.63	823.02	821.40	-1.62	-0.20	56.78	7.43			
China	41.28	41.26	43.32	43.32	6.32	6.32	6.29	6.29	260.78	260.67	272.55	272.55	0.00	0.00	11.88	4.56			
South America																			
Brazil	18.50	19.90	20.80	20.80	5.51	4.37	5.53	5.48	102.00	87.00	115.00	114.00	-1.00	-0.87	27.00	31.03			
Argentina	6.30	6.50	6.80	6.80	8.10	7.92	7.94	7.94	51.00	51.50	54.00	54.00	0.00	0.00	2.50	4.85			
Bolivia	0.42	0.47	0.48	0.48	2.26	2.30	2.32	2.32	0.96	1.08	1.10	1.10	0.00	0.00	0.02	1.85			
European Union	8.90	9.30	9.31	9.31	7.50	7.22	7.52	7.52	66.74	67.09	69.96	69.96	0.00	0.00	2.87	4.27			
Africa																			
South Africa	2.91	3.12	3.10	3.00	5.45	5.42	5.48	5.67	15.84	16.90	17.00	17.00	0.00	0.00	0.10	0.59			
Nigeria	6.50	5.50	6.00	6.00	1.69	1.82	1.93	1.93	11.00	10.00	11.60	11.60	0.00	0.00	1.60	16.00			
Ethiopia	2.27	2.53	2.40	2.40	4.24	4.18	3.75	3.75	9.64	10.56	9.00	9.00	0.00	0.00	-1.56	-14.75			
Egypt	0.80	0.80	0.80	0.80	8.00	8.00	8.00	8.00	6.40	6.40	6.40	6.40	0.00	0.00	0.00	0.00			
Tanzania	3.43	4.20	4.10	4.10	1.65	1.55	1.59	1.59	5.65	6.50	6.50	6.50	0.00	0.00	0.00	0.00			
Malawi	1.70	1.70	1.70	1.70	1.78	2.22	2.47	2.47	3.03	3.78	4.20	4.20	0.00	0.00	0.42	11.11			
Zambia	0.84	1.29	1.30	1.30	2.38	2.62	2.78	2.78	2.00	3.39	3.62	3.62	0.00	0.00	0.23	6.88			
Kenya	2.20	2.20	2.20	2.20	1.77	1.82	1.59	1.59	3.90	4.00	3.50	3.50	0.00	0.00	-0.50	-12.50			
Uganda	0.95	1.10	1.10	1.10	2.71	2.50	2.55	2.55	2.58	2.75	2.80	2.80	0.00	0.00	0.05	1.82			
Zimbabwe	1.62	1.58	1.95	1.95	0.48	0.57	1.39	1.39	0.78	0.91	2.72	2.72	0.00	0.00	1.81	199.23			
Former Soviet Union - 12																			
Ukraine	4.99	5.40	5.30	5.30	7.19	5.62	7.92	7.92	35.89	30.30	42.00	42.00	0.00	0.00	11.70	38.63			
Russia	2.50	2.73	2.80	2.80	5.70	5.08	5.36	5.36	14.28	13.87	15.00	15.00	0.00	0.00	1.13	8.13			
South Asia																			
India	9.57	9.87	9.70	9.70	3.01	3.19	3.09	3.09	28.77	31.51	30.00	30.00	0.00	0.00	-1.51	-4.79			
Pakistan	1.41	1.39	1.40	1.40	5.12	5.63	5.43	5.43	7.24	7.80	7.60	7.60	0.00	0.00	-0.20	-2.56			
Nepal	0.96	0.97	0.97	0.97	2.76	2.82	2.82	2.82	2.65	2.72	2.72	2.72	0.00	0.00	0.00	0.00			
Southeast Asia																			
Indonesia	3.80	3.60	3.60	3.60	3.16	3.28	3.33	3.33	12.00	11.80	12.00	12.00	0.00	0.00	0.20	1.69			
Philippines	2.51	2.57	2.50	2.60	3.20	3.25	3.12	3.12	8.03	8.35	7.80	8.10	0.30	3.85	-0.25	-3.02			
Vietnam	0.99	0.95	0.90	0.90	4.80	4.83	4.89	4.89	4.76	4.59	4.40	4.40	0.00	0.00	-0.19	-4.14			
Thailand	1.22	1.26	1.20	1.20	3.70	4.46	4.42	4.42	4.50	5.60	5.30	5.30	0.00	0.00	-0.30	-5.36			
Mexico	6.62	7.14	7.20	7.20	4.03	3.83	3.83	3.83	26.66	27.35	27.60	27.60	0.00	0.00	0.25	0.93			
Canada	1.45	1.41	1.39	1.39	9.24	9.63	10.05	10.05	13.40	13.56	13.98	13.98	0.00	0.00	0.42	3.10			
Turkey	0.52	0.62	0.54	0.54	11.54	11.45	12.04	12.04	6.00	7.10	6.50	6.50	0.00	0.00	-0.60	-8.45			
Others	25.48	26.10	25.42	25.31	2.64	2.59	2.68	2.66	67.18	67.55	68.16	67.25	-0.92	-1.34	-0.30	-0.45			

World and Selected Countries and Regions

Table 05 Barley Area, Yield, and Production

Country / Region	Area (Million hectares)				Yield (Metric tons per hectare)				Production (Million metric tons)				Change in Production			
	Prel.		2021/22 Proj.		Prel.		2021/22 Proj.		Prel.		2021/22 Proj.		From last month		From last year	
	2019/20	2020/21	Jan	Feb	2019/20	2020/21	Jan	Feb	2019/20	2020/21	Jan	Feb	MMT	Percent	MMT	Percent
World	52.55	51.47	49.59	48.57	3.02	3.11	2.97	3.00	158.76	160.03	147.05	145.79	-1.26	-0.86	-14.25	-8.90
United States	0.90	0.90	0.79	0.79	4.18	4.15	3.25	3.25	3.76	3.72	2.56	2.56	0.00	0.00	-1.16	-31.11
Total Foreign	51.65	50.57	48.80	47.78	3.00	3.09	2.96	3.00	155.01	156.32	144.49	143.23	-1.26	-0.87	-13.09	-8.37
European Union	11.16	11.04	10.40	10.40	4.94	4.91	5.07	5.07	55.18	54.23	52.75	52.75	0.00	0.00	-1.48	-2.74
United Kingdom	1.16	1.39	1.15	1.15	6.93	5.85	6.26	6.09	8.05	8.12	7.20	7.00	-0.20	-2.78	-1.12	-13.76
Former Soviet Union - 12																
Russia	8.40	8.16	7.65	7.65	2.37	2.53	2.29	2.29	19.94	20.63	17.50	17.50	0.00	0.00	-3.13	-15.17
Ukraine	2.78	2.58	2.67	2.67	3.42	3.08	3.82	3.82	9.53	7.95	10.20	10.20	0.00	0.00	2.25	28.35
Kazakhstan	2.98	2.73	2.20	2.16	1.29	1.34	1.14	1.10	3.83	3.66	2.50	2.37	-0.13	-5.32	-1.29	-35.31
Belarus	0.41	0.41	0.35	0.35	2.69	3.35	2.86	2.86	1.10	1.38	1.00	1.00	0.00	0.00	-0.38	-27.27
Azerbaijan	0.34	0.35	0.37	0.37	2.97	2.81	2.74	2.74	1.02	0.97	1.00	1.00	0.00	0.00	0.03	3.09
Canada	2.73	2.81	3.00	3.00	3.81	3.82	2.31	2.31	10.38	10.74	6.95	6.95	0.00	0.00	-3.79	-35.31
Australia	5.04	4.40	4.30	4.30	2.01	2.98	3.02	3.02	10.13	13.10	13.00	13.00	0.00	0.00	-0.10	-0.76
Middle East																
Turkey	3.80	3.80	3.70	3.70	2.08	2.13	1.22	1.22	7.90	8.10	4.50	4.50	0.00	0.00	-3.60	-44.44
Iran	1.70	1.60	1.70	1.70	2.12	2.25	1.59	1.59	3.60	3.60	2.70	2.70	0.00	0.00	-0.90	-25.00
Iraq	1.20	1.20	1.10	0.60	1.33	1.29	1.18	1.17	1.60	1.55	1.30	0.70	-0.60	-46.15	-0.85	-54.84
Syria	1.50	1.50	1.30	0.80	1.33	1.27	0.85	0.81	2.00	1.90	1.10	0.65	-0.45	-40.91	-1.25	-65.79
Africa																
Ethiopia	0.95	0.93	1.00	1.00	2.50	2.53	2.35	2.35	2.38	2.34	2.35	2.35	0.00	0.00	0.01	0.47
Morocco	1.05	1.47	1.49	1.49	1.11	0.44	1.87	1.87	1.16	0.64	2.78	2.78	0.00	0.00	2.14	334.38
Algeria	1.03	1.03	1.03	1.03	1.95	1.80	1.56	1.56	2.00	1.85	1.60	1.60	0.00	0.00	-0.25	-13.28
Tunisia	0.47	0.36	0.37	0.37	1.94	1.28	1.77	1.77	0.91	0.47	0.65	0.65	0.00	0.00	0.19	39.78
South Africa	0.13	0.14	0.10	0.10	2.61	4.14	3.68	3.68	0.35	0.59	0.35	0.35	0.00	0.00	-0.24	-40.48
South America																
Argentina	1.08	1.01	1.25	1.25	3.35	4.00	3.84	3.84	3.62	4.04	4.80	4.80	0.00	0.00	0.77	18.96
Uruguay	0.17	0.19	0.20	0.22	3.68	4.78	4.00	4.11	0.61	0.89	0.80	0.92	0.12	15.00	0.03	3.49
Brazil	0.12	0.10	0.10	0.10	3.61	3.63	3.74	3.74	0.43	0.37	0.39	0.39	0.00	0.00	0.01	2.94
India	0.58	0.59	0.60	0.60	2.84	2.92	2.78	2.78	1.63	1.72	1.67	1.67	0.00	0.00	-0.05	-2.91
China	0.51	0.51	0.51	0.51	3.94	4.00	3.92	3.92	2.01	2.04	2.00	2.00	0.00	0.00	-0.04	-1.77
Mexico	0.36	0.30	0.34	0.34	2.81	3.07	2.82	2.82	1.01	0.91	0.96	0.96	0.00	0.00	0.06	6.08
Afghanistan	0.18	0.17	0.16	0.16	1.39	1.41	1.25	1.25	0.25	0.24	0.20	0.20	0.00	0.00	-0.04	-16.67
Others	1.83	1.82	1.78	1.78	2.41	2.37	2.39	2.39	4.41	4.32	4.25	4.25	0.00	0.00	-0.07	-1.64

World and Selected Countries and Regions

Table 06 Oats Area, Yield, and Production

Country / Region	Area (Million hectares)				Yield (Metric tons per hectare)				Production (Million metric tons)				Change in Production			
	2019/20	Prel.	2021/22 Proj.		2019/20	Prel.	2021/22 Proj.		2019/20	Prel.	2021/22 Proj.		From last month		From last year	
		2020/21	Jan	Feb		2020/21	Jan	Feb		2020/21	Jan	Feb	MMT	Percent	MMT	Percent
World	9.56	9.97	9.48	9.48	2.43	2.56	2.39	2.39	23.22	25.48	22.68	22.66	-0.02	-0.10	-2.83	-11.09
United States	0.34	0.41	0.26	0.26	2.31	2.34	2.20	2.20	0.77	0.95	0.58	0.58	0.00	0.00	-0.38	-39.41
Total Foreign	9.22	9.56	9.22	9.22	2.43	2.57	2.40	2.40	22.45	24.53	22.10	22.08	-0.02	-0.10	-2.45	-9.99
European Union	2.38	2.55	2.60	2.60	2.93	3.30	3.13	3.13	6.97	8.42	8.15	8.15	0.00	0.00	-0.27	-3.23
Former Soviet Union - 12																
Russia	2.43	2.33	2.15	2.15	1.82	1.77	1.74	1.74	4.42	4.13	3.75	3.75	0.00	0.00	-0.38	-9.13
Ukraine	0.18	0.20	0.18	0.18	2.32	2.54	2.58	2.58	0.43	0.52	0.47	0.47	0.00	0.00	-0.05	-9.71
Belarus	0.16	0.16	0.15	0.15	2.30	2.87	2.33	2.33	0.37	0.45	0.35	0.35	0.00	0.00	-0.10	-21.35
Kazakhstan	0.24	0.23	0.20	0.20	1.10	1.05	1.00	0.90	0.27	0.24	0.20	0.18	-0.02	-9.00	-0.06	-24.17
Canada	1.17	1.31	1.11	1.11	3.62	3.48	2.34	2.34	4.23	4.58	2.61	2.61	0.00	0.00	-1.97	-43.05
South America																
Argentina	0.32	0.24	0.30	0.30	1.86	2.13	2.30	2.30	0.60	0.51	0.69	0.69	0.00	0.00	0.18	35.29
Brazil	0.40	0.43	0.43	0.43	2.21	1.99	2.18	2.18	0.88	0.85	0.93	0.93	0.00	0.00	0.08	9.57
Chile	0.10	0.11	0.11	0.11	4.92	4.65	5.45	5.45	0.48	0.53	0.60	0.60	0.00	0.00	0.08	14.29
Uruguay	0.02	0.02	0.02	0.01	2.19	2.20	2.33	2.21	0.04	0.03	0.04	0.03	0.00	-11.43	0.00	-6.06
Oceania																
Australia	0.82	0.95	0.90	0.90	1.40	1.76	1.72	1.72	1.14	1.68	1.55	1.55	0.00	0.00	-0.13	-7.46
New Zealand	0.01	0.00	0.00	0.00	5.40	6.00	6.00	6.00	0.03	0.02	0.02	0.02	0.00	0.00	0.00	0.00
China	0.41	0.41	0.41	0.41	1.48	1.48	1.48	1.48	0.60	0.60	0.60	0.60	0.00	0.00	0.00	0.00
Africa																
Algeria	0.09	0.09	0.09	0.09	1.29	1.29	1.29	1.29	0.11	0.11	0.11	0.11	0.00	0.00	0.00	0.00
Morocco	0.01	0.02	0.04	0.04	0.62	0.40	1.13	1.13	0.01	0.01	0.05	0.05	0.00	0.00	0.04	650.00
South Africa	0.02	0.03	0.04	0.04	0.81	2.19	2.29	2.29	0.02	0.06	0.08	0.08	0.00	0.00	0.02	40.35
Other Europe																
United Kingdom	0.18	0.21	0.20	0.20	5.91	4.91	5.50	5.50	1.08	1.03	1.10	1.10	0.00	0.00	0.07	6.69
Norway	0.07	0.07	0.07	0.07	4.29	4.29	4.29	4.29	0.30	0.30	0.30	0.30	0.00	0.00	0.00	0.00
Serbia	0.03	0.03	0.03	0.03	2.17	2.17	2.17	2.17	0.07	0.07	0.07	0.07	0.00	0.00	0.00	0.00
Albania	0.02	0.02	0.01	0.01	2.06	2.25	2.14	2.14	0.03	0.04	0.03	0.03	0.00	0.00	-0.01	-16.67
Bosnia and Herzegovina	0.01	0.01	0.01	0.01	2.70	3.09	2.82	2.82	0.03	0.03	0.03	0.03	0.00	0.00	0.00	-8.82
Turkey	0.10	0.10	0.11	0.11	2.30	2.40	2.38	2.38	0.23	0.24	0.25	0.25	0.00	0.00	0.01	4.17
Mexico	0.05	0.03	0.05	0.05	1.98	2.03	2.00	2.00	0.10	0.06	0.09	0.09	0.00	0.00	0.03	42.86
Others	0.03	0.03	0.03	0.03	1.70	1.66	1.76	1.76	0.05	0.05	0.05	0.05	0.00	0.00	0.00	6.25

World and Selected Countries and Regions

Table 07 Rye Area, Yield, and Production

Country / Region	Area (Million hectares)				Yield (Metric tons per hectare)				Production (Million metric tons)				Change in Production			
	2019/20	Prel.	2021/22 Proj.		2019/20	Prel.	2021/22 Proj.		2019/20	Prel.	2021/22 Proj.		From last month		From last year	
		2020/21	Jan	Feb		2020/21	Jan	Feb		2020/21	Jan	Feb	MMT	Percent	MMT	Percent
World	4.04	4.16	4.02	4.02	3.04	3.43	3.13	3.12	12.25	14.29	12.56	12.56	0.00	0.00	-1.73	-12.11
United States	0.13	0.13	0.12	0.12	2.16	2.19	2.09	2.09	0.27	0.29	0.25	0.25	0.00	0.00	-0.04	-15.02
Total Foreign	3.91	4.03	3.90	3.90	3.06	3.48	3.16	3.16	11.98	14.00	12.31	12.31	0.00	0.00	-1.69	-12.05
European Union	2.21	2.08	1.95	1.95	3.80	4.31	4.13	4.13	8.40	8.96	8.05	8.05	0.00	0.00	-0.91	-10.20
Former Soviet Union - 12																
Russia	0.82	0.97	0.98	0.98	1.73	2.44	1.73	1.73	1.42	2.38	1.70	1.70	0.00	0.00	-0.68	-28.45
Belarus	0.32	0.36	0.33	0.33	2.37	2.92	2.46	2.46	0.76	1.05	0.80	0.80	0.00	0.00	-0.25	-23.88
Ukraine	0.12	0.14	0.17	0.17	2.90	3.28	3.53	3.53	0.34	0.46	0.60	0.60	0.00	0.00	0.14	30.72
Kazakhstan	0.02	0.02	0.04	0.04	1.10	1.25	1.00	0.91	0.02	0.03	0.04	0.04	0.00	0.00	0.01	33.33
Turkey	0.11	0.11	0.12	0.12	2.91	2.91	2.87	2.87	0.32	0.32	0.33	0.33	0.00	0.00	0.01	3.13
Canada	0.10	0.15	0.15	0.15	3.23	3.19	3.22	3.22	0.33	0.49	0.47	0.47	0.00	0.00	-0.02	-3.07
South America																
Chile	0.00	0.00	0.00	0.00	5.00	5.00	5.00	5.00	0.01	0.01	0.01	0.01	0.00	0.00	0.00	0.00
Argentina	0.11	0.09	0.07	0.07	2.00	1.50	2.00	2.00	0.22	0.14	0.14	0.14	0.00	0.00	0.01	6.67
Other Europe																
Bosnia and Herzegovina	0.00	0.00	0.00	0.00	2.50	3.67	3.00	3.00	0.01	0.01	0.01	0.01	0.00	0.00	0.00	-18.18
Switzerland	0.00	0.00	0.00	0.00	5.50	5.50	5.50	5.50	0.01	0.01	0.01	0.01	0.00	0.00	0.00	0.00
Serbia	0.00	0.00	0.00	0.00	2.50	2.50	2.50	2.50	0.01	0.01	0.01	0.01	0.00	0.00	0.00	0.00
Australia	0.04	0.04	0.04	0.04	0.68	0.68	0.68	0.68	0.03	0.03	0.03	0.03	0.00	0.00	0.00	0.00
Others	0.04	0.04	0.04	0.04	2.51	2.48	2.50	2.50	0.11	0.11	0.11	0.11	0.00	0.00	0.00	0.92

World and Selected Countries and Regions

Table 08 Sorghum Area, Yield, and Production

Country / Region	Area (Million hectares)				Yield (Metric tons per hectare)				Production (Million metric tons)				Change in Production			
	Prel.		2021/22 Proj.		Prel.		2021/22 Proj.		Prel.		2021/22 Proj.		From last month		From last year	
	2019/20	2020/21	Jan	Feb	2019/20	2020/21	Jan	Feb	2019/20	2020/21	Jan	Feb	MMT	Percent	MMT	Percent
World	39.78	42.68	41.70	41.74	1.46	1.45	1.56	1.56	57.93	61.94	65.10	65.31	0.21	0.33	3.37	5.45
United States	1.89	2.06	2.63	2.63	4.58	4.59	4.33	4.33	8.67	9.47	11.38	11.38	0.00	0.00	1.90	20.07
Total Foreign	37.88	40.62	39.08	39.12	1.30	1.29	1.37	1.38	49.26	52.46	53.72	53.93	0.21	0.40	1.47	2.81
Africa																
Nigeria	5.40	5.60	5.70	5.70	1.23	1.17	1.19	1.19	6.67	6.57	6.80	6.80	0.00	0.00	0.23	3.50
Ethiopia	1.83	1.68	1.87	1.87	2.88	2.69	2.78	2.78	5.27	4.52	5.20	5.20	0.00	0.00	0.68	15.12
Sudan	6.83	9.03	7.00	7.00	0.54	0.57	0.71	0.71	3.71	5.15	5.00	5.00	0.00	0.00	-0.15	-2.91
Burkina Faso	1.89	1.80	1.80	1.80	0.99	1.02	1.19	1.19	1.87	1.84	2.15	2.15	0.00	0.00	0.31	16.85
Mali	1.50	1.83	1.50	1.50	1.01	0.98	1.00	1.00	1.51	1.80	1.50	1.50	0.00	0.00	-0.30	-16.71
Niger	3.75	3.70	3.70	3.70	0.51	0.52	0.51	0.51	1.90	1.92	1.90	1.90	0.00	0.00	-0.02	-1.14
Cameroon	0.73	0.74	0.74	0.74	1.67	1.62	1.62	1.62	1.22	1.20	1.20	1.20	0.00	0.00	0.00	0.00
Tanzania	0.65	0.70	0.70	0.70	1.13	1.07	1.07	1.07	0.73	0.75	0.75	0.75	0.00	0.00	0.00	0.00
Egypt	0.14	0.14	0.14	0.14	5.36	5.36	5.36	5.36	0.75	0.75	0.75	0.75	0.00	0.00	0.00	0.00
Uganda	0.42	0.43	0.43	0.43	0.95	0.94	0.94	0.94	0.40	0.40	0.40	0.40	0.00	0.00	0.00	0.00
Ghana	0.30	0.25	0.25	0.25	1.15	1.42	1.12	1.12	0.35	0.36	0.28	0.28	0.00	0.00	-0.08	-21.35
Mozambique	0.23	0.26	0.25	0.25	0.69	0.54	0.70	0.70	0.16	0.14	0.18	0.18	0.00	0.00	0.03	23.24
South Africa	0.04	0.05	0.05	0.05	3.67	4.29	3.78	3.78	0.16	0.21	0.17	0.17	0.00	0.00	-0.04	-19.05
Mexico	1.38	1.29	1.42	1.42	3.14	3.37	3.31	3.31	4.33	4.35	4.70	4.70	0.00	0.00	0.35	8.10
South America																
Argentina	0.58	0.75	0.85	0.85	4.35	4.43	4.41	4.41	2.50	3.32	3.75	3.75	0.00	0.00	0.43	12.95
Brazil	0.84	0.88	0.90	0.90	2.99	3.12	3.00	3.00	2.50	2.73	2.70	2.70	0.00	0.00	-0.03	-1.17
South Asia																
India	4.82	4.24	4.60	4.60	0.99	1.13	0.96	0.96	4.77	4.78	4.40	4.40	0.00	0.00	-0.38	-7.95
Pakistan	0.24	0.25	0.26	0.26	0.58	0.58	0.59	0.59	0.14	0.15	0.15	0.15	0.00	0.00	0.01	3.45
China	0.64	0.64	0.63	0.63	4.90	4.68	4.76	4.76	3.14	2.97	3.00	3.00	0.00	0.00	0.03	1.01
Australia	0.20	0.51	0.58	0.60	1.95	2.94	3.28	3.33	0.40	1.50	1.90	2.00	0.10	5.26	0.50	33.33
European Union	0.19	0.21	0.15	0.18	5.38	5.15	5.95	5.81	1.01	1.10	0.89	1.04	0.15	16.82	-0.07	-6.08
Others	5.30	5.65	5.57	5.56	1.09	1.06	1.07	1.06	5.79	5.96	5.96	5.92	-0.04	-0.60	-0.03	-0.55

World and Selected Countries and Regions

Table 09 Rice Area, Yield, and Production
World and Selected Countries and Regions

Country / Region	Area (Million hectares)				Yield (Metric tons per hectare)				Production (Million metric tons)				Change in Production			
	2019/20	Prel.	2021/22 Proj.		2019/20	Prel.	2021/22 Proj.		2019/20	Prel.	2021/22 Proj.		From last month		From last year	
		2020/21	Jan	Feb		2020/21	Jan	Feb		2020/21	Jan	Feb	MMT	Percent	MMT	Percent
World	161.70	164.82	164.65	164.96	4.61	4.60	4.62	4.62	498.87	507.46	509.87	510.31	0.43	0.09	2.85	0.56
United States	1.00	1.21	1.01	1.01	8.38	8.54	8.64	8.64	5.88	7.22	6.09	6.09	0.00	0.00	-1.13	-15.70
Total Foreign	160.70	163.61	163.64	163.96	4.58	4.57	4.60	4.59	492.99	500.23	503.78	504.22	0.43	0.09	3.98	0.80
East Asia																
China	29.69	30.08	29.92	29.92	7.06	7.04	7.11	7.11	146.73	148.30	148.99	148.99	0.00	0.00	0.69	0.47
Japan	1.54	1.53	1.53	1.53	6.78	6.79	6.81	6.81	7.61	7.57	7.56	7.56	0.00	0.00	-0.01	-0.17
Korea, South	0.73	0.73	0.73	0.73	6.87	6.49	7.12	7.12	3.74	3.51	3.88	3.88	0.00	0.00	0.38	10.69
Korea, North	0.48	0.49	0.50	0.50	5.89	4.44	4.18	4.18	1.82	1.40	1.36	1.36	0.00	0.00	-0.04	-2.72
South Asia																
India	43.66	45.00	45.50	45.50	4.08	4.08	4.12	4.12	118.87	122.27	125.00	125.00	0.00	0.00	2.73	2.23
Bangladesh	11.83	11.50	11.42	11.62	4.55	4.51	4.66	4.63	35.85	34.60	35.50	35.85	0.35	0.99	1.25	3.61
Pakistan	3.03	3.38	3.30	3.40	3.67	3.74	3.73	3.84	7.41	8.42	8.20	8.70	0.50	6.10	0.28	3.34
Nepal	1.46	1.47	1.48	1.48	3.80	3.78	3.77	3.77	3.70	3.70	3.70	3.70	0.00	0.00	0.00	0.11
Sri Lanka	0.97	1.09	1.00	0.98	4.85	4.57	4.50	4.41	3.21	3.39	3.06	2.92	-0.14	-4.44	-0.47	-13.75
Southeast Asia																
Indonesia	11.60	11.80	11.83	11.83	4.71	4.71	4.71	4.71	34.70	35.30	35.40	35.40	0.00	0.00	0.10	0.28
Vietnam	7.38	7.31	7.30	7.30	5.88	6.00	5.96	5.96	27.10	27.38	27.19	27.19	0.00	0.00	-0.19	-0.68
Thailand	9.89	10.51	10.40	10.40	2.70	2.72	2.81	2.81	17.66	18.86	19.30	19.30	0.00	0.00	0.44	2.32
Burma	6.90	6.90	6.90	6.90	2.86	2.85	2.85	2.85	12.65	12.60	12.60	12.60	0.00	0.00	0.00	0.00
Philippines	4.64	4.76	4.75	4.80	4.08	4.14	4.11	4.10	11.93	12.42	12.30	12.40	0.10	0.81	-0.02	-0.13
Cambodia	3.26	3.27	3.30	3.30	2.89	2.90	2.93	2.93	5.74	5.78	5.90	5.90	0.00	0.00	0.12	2.02
Laos	0.84	0.96	0.97	0.97	3.01	3.14	3.19	3.19	1.60	1.90	1.95	1.95	0.00	0.00	0.05	2.63
Malaysia	0.70	0.68	0.68	0.68	4.01	4.07	4.07	4.07	1.83	1.80	1.80	1.80	0.00	0.00	0.00	0.00
South America																
Brazil	1.67	1.68	1.70	1.70	6.71	7.00	6.94	6.65	7.60	8.00	8.02	7.68	-0.34	-4.24	-0.32	-3.96
Peru	0.41	0.42	0.41	0.41	7.46	7.76	7.90	7.90	2.13	2.25	2.24	2.24	0.00	0.00	-0.02	-0.67
Africa																
Egypt	0.76	0.70	0.50	0.50	8.20	8.28	8.41	8.41	4.30	4.00	2.90	2.90	0.00	0.00	-1.10	-27.50
Madagascar	1.40	1.40	1.40	1.40	3.02	3.02	2.86	2.86	2.71	2.71	2.56	2.56	0.00	0.00	-0.15	-5.43
Nigeria	3.50	3.60	3.65	3.65	2.29	2.16	2.17	2.17	5.04	4.89	5.00	5.00	0.00	0.00	0.11	2.25
European Union	0.42	0.42	0.41	0.41	6.96	6.78	6.68	6.68	1.99	1.95	1.85	1.85	0.00	0.00	-0.10	-4.97
Iran	0.58	0.58	0.56	0.56	5.25	5.27	5.14	5.14	1.99	2.00	1.90	1.90	0.00	0.00	-0.10	-5.00
Others	13.37	13.38	13.51	13.50	2.85	2.86	2.87	2.87	25.10	25.24	25.61	25.57	-0.04	-0.16	0.33	1.32

Yield is on a rough basis, before the milling process. Production is on a milled basis, after the milling process.

Table 10 Total Oilseed Area, Yield, and Production

World and Selected Countries and Regions

Country / Region	Area (Million hectares)				Yield (Metric tons per hectare)				Production (Million metric tons)				Change in Production			
	2019/20	Prel.	2021/22 Proj.		2019/20	Prel.	2021/22 Proj.		2019/20	Prel.	2021/22 Proj.		From last month		From last year	
		2020/21	Jan	Feb		2020/21	Jan	Feb		2020/21	Jan	Feb	MMT	Percent	MMT	Percent
World Total	--	--	--	--	--	--	--	--	581.01	603.63	619.17	611.48	-7.69	-1.24	7.85	1.30
Total Foreign	--	--	--	--	--	--	--	--	474.03	479.14	488.58	480.89	-7.69	-1.57	1.75	0.37
Oilseed, Copra	--	--	--	--	--	--	--	--	5.66	5.56	5.82	5.83	0.00	0.05	0.27	4.76
Oilseed, Palm Kernel	--	--	--	--	--	--	--	--	19.29	19.02	19.74	19.73	-0.01	-0.06	0.71	3.74
Major Oilseeds	245.69	250.18	258.13	257.59	2.26	2.31	2.30	2.27	556.05	579.05	593.60	585.92	-7.68	-1.29	6.87	1.19
United States	36.83	38.83	40.95	40.95	2.91	3.21	3.19	3.19	106.98	124.49	130.59	130.59	0.00	0.00	6.10	4.90
Foreign Oilseeds	208.86	211.35	217.18	216.64	2.15	2.15	2.13	2.10	449.07	454.56	463.01	455.33	-7.68	-1.66	0.78	0.17
South America	64.00	65.33	67.13	66.74	3.18	3.20	3.14	3.03	203.24	208.84	210.65	201.96	-8.69	-4.13	-6.88	-3.29
Brazil	38.77	40.47	42.21	42.21	3.45	3.52	3.41	3.30	133.78	142.28	144.13	139.13	-5.00	-3.47	-3.15	-2.21
Argentina	19.03	19.01	18.65	18.66	2.82	2.69	2.77	2.69	53.64	51.22	51.66	50.17	-1.49	-2.89	-1.05	-2.05
Paraguay	3.57	3.24	3.29	2.89	2.90	3.09	2.62	2.22	10.36	10.02	8.62	6.42	-2.20	-25.53	-3.60	-35.93
Bolivia	1.49	1.51	1.53	1.53	2.00	2.09	2.07	2.07	2.99	3.15	3.16	3.16	0.00	0.00	0.01	0.44
Uruguay	0.98	0.97	1.32	1.32	2.14	1.87	2.06	2.06	2.09	1.82	2.72	2.72	0.00	0.00	0.90	49.42
China	24.91	25.50	24.15	24.15	2.51	2.57	2.57	2.57	62.44	65.58	62.08	62.08	0.00	0.00	-3.50	-5.33
South Asia	40.95	41.95	42.32	42.52	0.96	0.97	1.03	1.05	39.13	40.70	43.74	44.83	1.09	2.49	4.14	10.16
India	37.50	38.65	39.25	39.45	0.94	0.97	1.02	1.04	35.20	37.55	40.07	41.15	1.09	2.72	3.60	9.59
Pakistan	3.08	2.94	2.70	2.70	1.13	0.92	1.20	1.20	3.49	2.69	3.23	3.23	0.00	0.00	0.54	20.05
European Union	10.65	10.79	11.04	11.04	2.62	2.62	2.81	2.81	27.95	28.25	30.98	30.98	0.00	0.00	2.72	9.64
United Kingdom	0.50	0.38	0.32	0.32	3.38	2.77	3.41	3.41	1.68	1.05	1.08	1.08	0.00	0.00	0.03	2.38
Former Soviet Union - 12	26.07	25.70	27.31	27.32	1.96	1.73	1.92	1.92	51.10	44.58	52.41	52.41	0.00	0.00	7.83	17.57
Russia	12.56	12.50	14.20	14.20	1.73	1.61	1.63	1.63	21.70	20.14	23.10	23.10	0.00	0.00	2.96	14.68
Ukraine	9.70	9.65	9.35	9.35	2.52	2.06	2.59	2.59	24.46	19.85	24.25	24.25	0.00	0.00	4.40	22.17
Uzbekistan	1.02	0.99	1.00	1.00	1.39	1.43	1.39	1.39	1.43	1.42	1.38	1.38	0.00	0.00	-0.04	-2.68
Canada	10.77	10.41	11.18	11.18	2.43	2.49	1.70	1.70	26.12	25.95	18.95	18.95	0.00	0.00	-6.99	-26.95
Africa	22.62	22.37	23.83	23.48	1.04	1.04	1.03	1.04	23.49	23.17	24.59	24.47	-0.12	-0.48	1.30	5.61
Nigeria	4.32	4.62	4.97	4.97	1.38	1.22	1.25	1.25	5.96	5.65	6.20	6.20	0.00	0.00	0.55	9.73
South Africa	1.27	1.36	1.54	1.56	1.70	1.97	1.82	1.83	2.16	2.68	2.81	2.85	0.04	1.25	0.17	6.23
Tanzania	1.35	1.17	1.60	1.24	1.01	1.02	0.85	0.98	1.36	1.19	1.36	1.21	-0.15	-11.02	0.02	1.51
Southeast Asia	3.12	3.25	3.20	3.20	1.38	1.36	1.37	1.37	4.30	4.41	4.38	4.38	0.00	0.00	-0.04	-0.79
Burma	1.87	2.03	2.04	2.04	1.18	1.17	1.19	1.19	2.21	2.37	2.42	2.42	0.00	0.00	0.04	1.81
Indonesia	0.95	0.94	0.89	0.89	1.55	1.54	1.55	1.55	1.47	1.45	1.39	1.39	0.00	0.00	-0.06	-4.15
Australia	2.12	2.78	3.68	3.65	1.19	1.95	1.97	1.98	2.53	5.43	7.24	7.24	0.00	0.00	1.81	33.26
Turkey	1.42	1.18	1.32	1.32	2.33	2.46	2.55	2.55	3.31	2.89	3.35	3.35	0.00	0.00	0.46	15.86
Others	1.73	1.70	1.72	1.74	2.19	2.19	2.08	2.08	3.78	3.71	3.56	3.61	0.05	1.32	-0.10	-2.77

World Total and Total Foreign: (Major Oilseeds plus copra and palm kernel) Major Oilseeds: (soybeans, sunflowerseeds, peanuts(inshell), cottonseed and rapeseed)

Table 11 Soybean Area, Yield, and Production

Country / Region	Area (Million hectares)				Yield (Metric tons per hectare)				Production (Million metric tons)				Change in Production			
	Prel.		2021/22 Proj.		Prel.		2021/22 Proj.		Prel.		2021/22 Proj.		From last month		From last year	
	2019/20	2020/21	Jan	Feb	2019/20	2020/21	Jan	Feb	2019/20	2020/21	Jan	Feb	MMT	Percent	MMT	Percent
World	122.93	127.88	130.00	129.60	2.76	2.86	2.87	2.81	339.88	366.23	372.56	363.86	-8.70	-2.34	-2.37	-0.65
United States	30.33	33.43	34.94	34.94	3.19	3.43	3.45	3.45	96.67	114.75	120.71	120.71	0.00	0.00	5.96	5.19
Total Foreign	92.60	94.45	95.06	94.66	2.63	2.66	2.65	2.57	243.21	251.48	251.86	243.16	-8.70	-3.45	-8.33	-3.31
South America																
Brazil	36.90	38.90	40.40	40.40	3.48	3.55	3.44	3.32	128.50	138.00	139.00	134.00	-5.00	-3.60	-4.00	-2.90
Argentina	16.70	16.47	16.20	16.20	2.92	2.81	2.87	2.78	48.80	46.20	46.50	45.00	-1.50	-3.23	-1.20	-2.60
Paraguay	3.50	3.15	3.20	2.80	2.93	3.14	2.66	2.25	10.25	9.90	8.50	6.30	-2.20	-25.88	-3.60	-36.36
Bolivia	1.36	1.39	1.40	1.40	2.08	2.17	2.14	2.14	2.83	3.00	3.00	3.00	0.00	0.00	0.00	0.00
Uruguay	0.92	0.91	1.25	1.25	2.17	1.88	2.08	2.08	1.99	1.71	2.60	2.60	0.00	0.00	0.89	52.31
East Asia																
China	9.33	9.88	8.40	8.40	1.94	1.98	1.95	1.95	18.09	19.60	16.40	16.40	0.00	0.00	-3.20	-16.34
Korea, South	0.06	0.06	0.06	0.06	1.81	1.47	1.71	1.71	0.11	0.08	0.09	0.09	0.00	0.00	0.01	16.05
Korea, North	0.16	0.16	0.17	0.17	1.70	1.40	1.44	1.44	0.26	0.23	0.24	0.24	0.00	0.00	0.01	3.48
Japan	0.14	0.14	0.15	0.15	1.47	1.65	1.66	1.66	0.21	0.24	0.24	0.24	0.00	0.00	0.01	2.55
India	12.19	12.70	12.50	12.50	0.76	0.82	0.95	0.95	9.30	10.45	11.90	11.90	0.00	0.00	1.45	13.88
Canada	2.27	2.04	2.13	2.13	2.71	3.12	2.94	2.94	6.15	6.36	6.27	6.27	0.00	0.00	-0.09	-1.37
Former Soviet Union - 12																
Russia	2.78	2.71	3.00	3.00	1.57	1.59	1.60	1.60	4.36	4.31	4.80	4.80	0.00	0.00	0.49	11.45
Ukraine	1.96	1.46	1.40	1.40	2.29	2.05	2.64	2.64	4.50	3.00	3.70	3.70	0.00	0.00	0.70	23.33
European Union	0.90	0.94	0.94	0.94	2.89	2.74	2.93	2.93	2.62	2.58	2.75	2.75	0.00	0.00	0.18	6.80
Southeast Asia																
Indonesia	0.40	0.39	0.35	0.35	1.20	1.22	1.21	1.21	0.48	0.48	0.43	0.43	0.00	0.00	-0.05	-10.53
Vietnam	0.04	0.04	0.03	0.03	1.57	1.57	1.67	1.67	0.07	0.06	0.05	0.05	0.00	0.00	-0.01	-9.09
Thailand	0.03	0.03	0.03	0.03	1.53	1.63	1.63	1.63	0.05	0.05	0.05	0.05	0.00	0.00	0.00	0.00
Burma	0.14	0.14	0.13	0.13	1.04	1.04	1.04	1.04	0.14	0.14	0.14	0.14	0.00	0.00	-0.01	-3.57
Serbia	0.22	0.22	0.22	0.22	2.73	2.89	2.45	2.45	0.60	0.64	0.54	0.54	0.00	0.00	-0.10	-14.96
Mexico	0.15	0.16	0.19	0.19	1.57	1.58	1.62	1.62	0.24	0.25	0.30	0.30	0.00	0.00	0.05	21.95
Africa																
South Africa	0.71	0.83	0.93	0.93	1.77	2.29	2.00	2.00	1.25	1.89	1.85	1.85	0.00	0.00	-0.04	-2.17
Nigeria	1.04	1.10	1.20	1.20	1.11	0.95	1.04	1.04	1.15	1.05	1.25	1.25	0.00	0.00	0.20	19.05
Zambia	0.20	0.16	0.30	0.30	1.43	1.81	0.84	0.84	0.28	0.30	0.25	0.25	0.00	0.00	-0.05	-15.82
Uganda	0.05	0.05	0.05	0.05	0.60	0.60	0.60	0.60	0.03	0.03	0.03	0.03	0.00	0.00	0.00	0.00
Middle East																
Iran	0.07	0.07	0.07	0.07	2.43	2.41	2.29	2.29	0.17	0.17	0.16	0.16	0.00	0.00	-0.01	-5.33
Turkey	0.03	0.03	0.03	0.03	3.89	3.79	3.67	3.67	0.11	0.11	0.11	0.11	0.00	0.00	0.00	0.00
Others	0.35	0.34	0.35	0.35	1.95	2.03	2.02	2.02	0.69	0.69	0.71	0.71	0.00	0.00	0.02	3.35

World and Selected Countries and Regions

Table 12 Cottonseed Area, Yield, and Production

Country / Region	Area (Million hectares)				Yield (Metric tons per hectare)				Production (Million metric tons)				Change in Production			
	Prel.		2021/22 Proj.		Prel.		2021/22 Proj.		Prel.		2021/22 Proj.		From last month		From last year	
	2019/20	2020/21	Jan	Feb	2019/20	2020/21	Jan	Feb	2019/20	2020/21	Jan	Feb	MMT	Percent	MMT	Percent
World	33.88	30.56	32.10	31.73	1.30	1.34	1.37	1.37	43.97	40.90	43.81	43.50	-0.32	-0.73	2.59	6.34
United States	4.65	3.35	4.03	4.03	1.16	1.20	1.21	1.21	5.39	4.02	4.88	4.88	0.00	0.00	0.86	21.25
Total Foreign	29.22	27.21	28.06	27.70	1.32	1.36	1.39	1.39	38.57	36.88	38.94	38.62	-0.32	-0.82	1.74	4.71
South Asia																
India	13.40	13.00	12.40	12.40	0.90	0.90	0.94	0.92	12.10	11.72	11.68	11.46	-0.21	-1.82	-0.26	-2.18
Pakistan	2.45	2.20	2.00	2.00	1.10	0.89	1.26	1.26	2.69	1.95	2.51	2.51	0.00	0.00	0.56	28.89
China	3.45	3.25	3.10	3.10	3.10	3.50	3.41	3.41	10.68	11.37	10.58	10.58	0.00	0.00	-0.78	-6.90
Former Soviet Union - 12																
Uzbekistan	1.01	0.98	0.98	0.98	1.36	1.41	1.36	1.36	1.37	1.37	1.33	1.33	0.00	0.00	-0.04	-2.84
Turkmenistan	0.55	0.55	0.55	0.55	0.66	0.66	0.64	0.64	0.36	0.36	0.35	0.35	0.00	0.00	-0.01	-2.22
Tajikistan	0.18	0.16	0.17	0.17	1.27	1.11	1.15	1.15	0.23	0.18	0.20	0.20	0.00	0.00	0.02	9.55
Kazakhstan	0.13	0.11	0.12	0.12	1.13	0.95	0.90	0.90	0.14	0.11	0.10	0.10	0.00	0.00	0.00	-1.90
South America																
Brazil	1.67	1.37	1.60	1.60	2.75	2.62	2.74	2.74	4.58	3.59	4.38	4.38	0.00	0.00	0.79	21.99
Argentina	0.42	0.45	0.45	0.45	0.68	0.67	0.70	0.70	0.28	0.30	0.32	0.32	0.00	0.00	0.02	5.33
Middle East																
Turkey	0.57	0.35	0.45	0.45	1.98	2.71	2.76	2.76	1.13	0.95	1.24	1.24	0.00	0.00	0.29	31.05
Syria	0.03	0.03	0.03	0.03	2.36	2.36	2.20	2.20	0.06	0.06	0.06	0.06	0.00	0.00	0.00	-6.78
Iran	0.09	0.10	0.08	0.10	1.22	1.35	1.10	1.35	0.11	0.13	0.09	0.14	0.05	53.41	0.00	0.75
Australia	0.06	0.28	0.63	0.60	3.12	3.06	2.64	2.75	0.19	0.84	1.65	1.65	0.00	0.00	0.81	96.43
European Union	0.35	0.34	0.32	0.32	1.81	1.58	1.48	1.48	0.64	0.54	0.48	0.48	0.00	0.00	-0.06	-11.36
Africa																
Burkina Faso	0.58	0.56	0.60	0.60	0.42	0.46	0.44	0.45	0.24	0.25	0.26	0.27	0.01	2.67	0.02	6.32
Mali	0.74	0.17	0.72	0.72	0.52	0.49	0.55	0.54	0.38	0.08	0.40	0.39	-0.01	-1.77	0.31	380.25
Cameroon	0.25	0.23	0.23	0.23	1.29	1.51	1.52	1.52	0.32	0.34	0.35	0.35	0.00	0.00	0.01	2.94
Cote d'Ivoire	0.41	0.45	0.48	0.48	0.66	0.61	0.62	0.62	0.27	0.27	0.29	0.29	0.00	0.00	0.02	8.89
Benin	0.67	0.62	0.64	0.64	0.71	0.78	0.78	0.78	0.47	0.48	0.50	0.50	0.00	0.00	0.02	3.55
Tanzania	0.35	0.17	0.60	0.24	0.75	0.56	0.44	0.46	0.26	0.09	0.26	0.11	-0.15	-57.47	0.02	19.35
Egypt	0.10	0.07	0.10	0.10	0.92	1.00	1.00	1.00	0.09	0.07	0.10	0.10	0.00	0.00	0.04	53.85
Nigeria	0.15	0.27	0.27	0.27	0.57	0.56	0.56	0.56	0.09	0.15	0.15	0.15	0.00	0.00	0.00	0.00
Uganda	0.09	0.10	0.10	0.10	1.67	1.40	1.40	1.40	0.15	0.14	0.14	0.14	0.00	0.00	0.00	0.00
Zimbabwe	0.18	0.24	0.21	0.21	0.40	0.55	0.36	0.36	0.07	0.13	0.08	0.08	0.00	0.00	-0.06	-42.86
Sudan	0.20	0.20	0.20	0.20	1.53	1.41	1.41	1.41	0.31	0.28	0.28	0.28	0.00	0.00	0.00	0.00
Mexico	0.23	0.15	0.15	0.15	2.37	2.40	2.39	2.39	0.53	0.35	0.36	0.36	0.00	0.00	0.01	2.87
Burma	0.25	0.24	0.25	0.25	1.22	1.17	1.18	1.18	0.30	0.28	0.29	0.29	0.00	0.00	0.01	3.57
Others	0.72	0.63	0.66	0.66	0.76	0.81	0.79	0.78	0.55	0.51	0.52	0.52	0.00	-0.77	0.01	1.37

World and Selected Countries and Regions

Table 13 Peanut Area, Yield, and Production

Country / Region	Area (Million hectares)				Yield (Metric tons per hectare)				Production (Million metric tons)				Change in Production						
	2019/20	Prel.		2021/22 Proj.		2019/20	Prel.		2021/22 Proj.		2019/20	Prel.		2021/22 Proj.		From last month		From last year	
		2020/21	Jan	Feb	2020/21		Jan	Feb	2020/21	Jan		Feb	MMT	Percent	MMT	Percent			
World	28.18	30.19	29.82	29.82	1.72	1.64	1.70	1.70	48.43	49.55	50.70	50.68	-0.02	-0.03	1.13	2.28			
United States	0.56	0.65	0.63	0.63	4.41	4.27	4.64	4.64	2.48	2.79	2.90	2.90	0.00	0.00	0.11	3.76			
Total Foreign	27.62	29.54	29.20	29.19	1.66	1.58	1.64	1.64	45.95	46.76	47.80	47.78	-0.02	-0.03	1.03	2.19			
China	4.63	4.73	4.75	4.75	3.78	3.80	3.83	3.83	17.52	17.99	18.20	18.20	0.00	0.00	0.21	1.15			
Africa																			
Nigeria	3.13	3.25	3.50	3.50	1.51	1.37	1.37	1.37	4.72	4.45	4.80	4.80	0.00	0.00	0.35	7.87			
Sudan	3.13	3.48	3.00	3.00	0.90	0.69	0.83	0.83	2.83	2.40	2.50	2.50	0.00	0.00	0.10	4.17			
Senegal	1.11	1.23	1.20	1.20	1.28	1.47	1.42	1.42	1.42	1.80	1.70	1.70	0.00	0.00	-0.10	-5.40			
Cameroon	0.43	0.43	0.43	0.43	1.40	1.40	1.40	1.40	0.60	0.60	0.60	0.60	0.00	0.00	0.00	0.00			
Ghana	0.33	0.33	0.33	0.33	1.36	1.36	1.36	1.36	0.45	0.45	0.45	0.45	0.00	0.00	0.00	0.00			
Chad	0.79	0.80	0.80	0.80	1.14	1.13	1.13	1.13	0.90	0.90	0.90	0.90	0.00	0.00	0.00	0.00			
Malawi	0.40	0.40	0.40	0.40	0.88	0.88	0.88	0.88	0.35	0.35	0.35	0.35	0.00	0.00	0.00	0.00			
Congo (Kinshasa)	0.50	0.50	0.50	0.50	0.92	0.90	0.90	0.90	0.46	0.45	0.45	0.45	0.00	0.00	0.00	0.00			
Niger	0.90	0.92	0.92	0.92	0.60	0.60	0.60	0.60	0.54	0.55	0.55	0.55	0.00	0.00	0.00	0.00			
Mali	0.45	0.43	0.43	0.43	0.82	1.00	1.00	1.00	0.37	0.43	0.43	0.43	0.00	0.00	0.00	0.00			
Uganda	0.43	0.43	0.43	0.43	0.71	0.71	0.71	0.71	0.30	0.30	0.30	0.30	0.00	0.00	0.00	0.00			
Burkina Faso	0.49	0.49	0.50	0.50	0.81	0.82	0.80	0.80	0.40	0.40	0.40	0.40	0.00	0.00	0.00	0.00			
Guinea	0.91	0.90	0.90	0.90	1.05	1.00	1.00	1.00	0.96	0.90	0.90	0.90	0.00	0.00	0.00	0.00			
Egypt	0.06	0.06	0.06	0.06	3.20	3.20	3.20	3.20	0.21	0.21	0.21	0.21	0.00	0.00	0.00	0.00			
Central African Republic	0.10	0.10	0.10	0.10	1.50	1.50	1.50	1.50	0.15	0.15	0.15	0.15	0.00	0.00	0.00	0.00			
South Africa	0.04	0.04	0.04	0.04	1.76	2.05	2.00	1.86	0.07	0.08	0.08	0.07	-0.02	-18.75	-0.02	-18.75			
Mozambique	0.53	0.35	0.38	0.38	0.28	0.30	0.34	0.34	0.15	0.10	0.13	0.13	0.00	0.00	0.03	26.21			
Cote d'Ivoire	0.15	0.15	0.15	0.15	1.45	1.45	1.45	1.45	0.21	0.21	0.21	0.21	0.00	0.00	0.00	0.00			
Benin	0.19	0.19	0.19	0.19	0.92	0.92	0.92	0.92	0.18	0.18	0.18	0.18	0.00	0.00	0.00	0.00			
South Asia																			
India	4.83	6.00	5.80	5.80	1.30	1.12	1.17	1.17	6.26	6.70	6.80	6.80	0.00	0.00	0.10	1.49			
Pakistan	0.10	0.14	0.10	0.10	0.92	0.89	0.92	0.92	0.10	0.12	0.09	0.09	0.00	0.00	-0.03	-26.83			
Southeast Asia																			
Indonesia	0.55	0.55	0.54	0.54	1.80	1.78	1.78	1.78	0.99	0.97	0.96	0.96	0.00	0.00	-0.01	-1.03			
Burma	0.89	1.06	1.06	1.06	1.55	1.48	1.51	1.51	1.38	1.56	1.60	1.60	0.00	0.00	0.04	2.43			
Vietnam	0.17	0.17	0.16	0.16	2.50	2.50	2.50	2.50	0.43	0.41	0.40	0.40	0.00	0.00	-0.01	-3.15			
Thailand	0.02	0.02	0.02	0.02	1.67	1.67	1.67	1.67	0.04	0.04	0.04	0.04	0.00	0.00	0.00	0.00			
South America																			
Argentina	0.37	0.40	0.38	0.38	3.50	3.16	3.68	3.68	1.29	1.27	1.40	1.40	0.00	0.00	0.13	10.24			
Brazil	0.16	0.17	0.18	0.18	3.93	3.88	3.89	3.89	0.63	0.64	0.70	0.70	0.00	0.00	0.06	9.38			
Mexico	0.05	0.06	0.05	0.05	1.74	1.73	1.74	1.74	0.08	0.10	0.09	0.09	0.00	0.00	-0.01	-9.80			
Others	1.79	1.79	1.90	1.90	1.12	1.15	1.18	1.18	2.00	2.05	2.24	2.24	0.00	0.00	0.19	9.32			

Table 14 Sunflowerseed Area, Yield, and Production

Country / Region	Area (Million hectares)				Yield (Metric tons per hectare)				Production (Million metric tons)				Change in Production						
	2019/20	Prel.		2021/22 Proj.		2019/20	Prel.		2021/22 Proj.		2019/20	Prel.		2021/22 Proj.		From last month		From last year	
		2020/21	Jan	Feb	2020/21		Jan	Feb	2020/21	Jan		Feb	MMT	Percent	MMT	Percent			
World	26.03	26.86	28.42	28.45	2.08	1.83	2.01	2.01	54.18	49.20	57.26	57.26	0.00	0.00	8.06	16.38			
United States	0.51	0.67	0.50	0.50	1.75	2.01	1.72	1.72	0.89	1.35	0.86	0.86	0.00	0.00	-0.49	-36.22			
Total Foreign	25.52	26.19	27.92	27.94	2.09	1.83	2.02	2.02	53.29	47.85	56.39	56.40	0.00	0.00	8.55	17.86			
Former Soviet Union - 12																			
Russia	8.36	8.35	9.60	9.60	1.83	1.59	1.61	1.61	15.31	13.27	15.50	15.50	0.00	0.00	2.23	16.81			
Ukraine	6.40	7.00	6.90	6.90	2.58	2.01	2.54	2.54	16.50	14.10	17.50	17.50	0.00	0.00	3.40	24.11			
Kazakhstan	0.82	0.75	0.92	0.94	1.03	1.13	1.20	1.10	0.84	0.84	1.10	1.03	-0.07	-6.18	0.19	22.27			
European Union	4.32	4.35	4.41	4.41	2.19	2.04	2.36	2.36	9.46	8.85	10.40	10.40	0.00	0.00	1.55	17.50			
South America																			
Argentina	1.53	1.67	1.60	1.60	2.11	2.05	2.13	2.13	3.24	3.43	3.40	3.40	0.00	0.00	-0.03	-0.87			
Uruguay	0.06	0.07	0.07	0.07	1.67	1.69	1.69	1.69	0.10	0.11	0.12	0.12	0.00	0.00	0.01	4.55			
Bolivia	0.14	0.13	0.13	0.13	1.19	1.20	1.30	1.30	0.16	0.15	0.16	0.16	0.00	0.00	0.01	9.33			
Brazil	0.05	0.03	0.03	0.03	1.60	1.61	1.63	1.63	0.08	0.05	0.05	0.05	0.00	0.00	0.00	-2.00			
Paraguay	0.03	0.03	0.03	0.03	1.39	1.53	1.55	1.55	0.04	0.05	0.05	0.05	0.00	0.00	0.00	4.35			
China	0.92	0.87	1.10	1.10	2.91	2.94	2.64	2.64	2.66	2.57	2.90	2.90	0.00	0.00	0.33	12.84			
South Asia																			
India	0.23	0.25	0.25	0.25	0.61	0.76	0.76	0.76	0.14	0.19	0.19	0.19	0.00	0.00	0.01	2.70			
Pakistan	0.14	0.15	0.15	0.15	1.04	1.07	1.10	1.10	0.15	0.16	0.17	0.17	0.00	0.00	0.01	3.13			
Middle East																			
Turkey	0.73	0.72	0.76	0.76	2.40	2.17	2.30	2.30	1.75	1.56	1.75	1.75	0.00	0.00	0.19	12.18			
Iran	0.04	0.04	0.04	0.04	1.08	1.08	1.00	1.00	0.04	0.04	0.04	0.04	0.00	0.00	0.00	2.33			
Israel	0.00	0.00	0.00	0.00	5.00	9.00	7.00	7.00	0.01	0.01	0.01	0.01	0.00	0.00	0.00	-22.22			
Africa																			
Egypt	0.01	0.01	0.01	0.01	2.38	2.38	2.38	2.38	0.02	0.02	0.02	0.02	0.00	0.00	0.00	0.00			
Morocco	0.02	0.02	0.02	0.02	1.32	1.16	1.25	1.25	0.03	0.02	0.03	0.03	0.00	0.00	0.00	13.64			
South Africa	0.50	0.48	0.56	0.58	1.58	1.42	1.52	1.55	0.79	0.68	0.85	0.90	0.05	5.88	0.22	32.94			
Burma	0.60	0.60	0.60	0.60	0.65	0.65	0.65	0.65	0.39	0.39	0.39	0.39	0.00	0.00	0.00	0.00			
Canada	0.03	0.05	0.04	0.04	2.17	2.24	2.05	2.05	0.06	0.10	0.08	0.08	0.00	0.00	-0.02	-18.81			
Australia	0.01	0.02	0.02	0.02	1.22	1.50	1.39	1.39	0.01	0.03	0.03	0.03	0.00	0.00	0.00	-7.41			
Others	0.60	0.63	0.68	0.67	2.55	1.98	2.45	2.54	1.54	1.24	1.67	1.69	0.02	1.20	0.46	36.81			

World and Selected Countries and Regions

Table 15 Rapeseed Area, Yield, and Production

Country / Region	Area (Million hectares)				Yield (Metric tons per hectare)				Production (Million metric tons)				Change in Production			
	Prel.		2021/22 Proj.		Prel.		2021/22 Proj.		Prel.		2021/22 Proj.		From last month		From last year	
	2019/20	2020/21	Jan	Feb	2019/20	2020/21	Jan	Feb	2019/20	2020/21	Jan	Feb	MMT	Percent	MMT	Percent
World	34.68	34.70	37.79	38.00	2.01	2.11	1.83	1.86	69.60	73.16	69.27	70.62	1.35	1.95	-2.54	-3.47
United States	0.78	0.73	0.85	0.85	2.00	2.16	1.46	1.46	1.55	1.58	1.24	1.24	0.00	0.00	-0.33	-21.02
Total Foreign	33.90	33.97	36.94	37.15	2.01	2.11	1.84	1.87	68.05	71.59	68.03	69.38	1.35	1.99	-2.21	-3.08
European Union	5.08	5.17	5.37	5.37	3.00	3.15	3.23	3.23	15.24	16.29	17.35	17.35	0.00	0.00	1.06	6.51
United Kingdom	0.50	0.38	0.32	0.32	3.38	2.77	3.41	3.41	1.68	1.05	1.08	1.08	0.00	0.00	0.03	2.38
Switzerland	0.02	0.02	0.02	0.02	3.14	3.14	3.14	3.14	0.07	0.07	0.07	0.07	0.00	0.00	0.00	0.00
Canada	8.47	8.33	9.01	9.01	2.35	2.34	1.40	1.40	19.91	19.49	12.60	12.60	0.00	0.00	-6.89	-35.33
China	6.58	6.77	6.80	6.80	2.05	2.08	2.06	2.06	13.49	14.05	14.00	14.00	0.00	0.00	-0.05	-0.35
South Asia																
India	6.86	6.70	8.30	8.50	1.08	1.27	1.14	1.27	7.40	8.50	9.50	10.80	1.30	13.68	2.30	27.06
Pakistan	0.39	0.45	0.45	0.45	1.45	1.02	1.03	1.03	0.56	0.46	0.47	0.47	0.00	0.00	0.01	1.09
Bangladesh	0.25	0.25	0.25	0.25	0.92	0.92	0.92	0.92	0.23	0.23	0.23	0.23	0.00	0.00	0.00	0.00
Former Soviet Union - 12																
Russia	1.42	1.45	1.60	1.60	1.44	1.77	1.75	1.75	2.04	2.57	2.80	2.80	0.00	0.00	0.23	9.08
Ukraine	1.34	1.19	1.05	1.05	2.59	2.31	2.90	2.90	3.47	2.75	3.05	3.05	0.00	0.00	0.30	10.91
Belarus	0.34	0.36	0.32	0.32	1.68	2.06	1.59	1.59	0.58	0.73	0.50	0.50	0.00	0.00	-0.23	-31.60
Kazakhstan	0.27	0.12	0.11	0.12	0.90	1.23	1.00	1.24	0.24	0.15	0.11	0.15	0.04	32.73	-0.01	-4.58
Australia	2.03	2.45	3.00	3.00	1.13	1.84	1.83	1.83	2.30	4.50	5.50	5.50	0.00	0.00	1.00	22.22
South America																
Chile	0.04	0.04	0.04	0.04	4.05	3.81	4.00	4.00	0.15	0.14	0.14	0.14	0.00	0.00	0.00	-0.71
Paraguay	0.04	0.05	0.04	0.04	1.71	1.41	1.45	1.45	0.06	0.07	0.06	0.06	0.00	0.00	0.00	-1.54
Ethiopia	0.02	0.03	0.03	0.03	1.83	1.80	1.80	1.80	0.04	0.05	0.05	0.05	0.00	0.00	0.00	0.00
Others	0.26	0.24	0.25	0.25	2.26	2.14	2.09	2.15	0.59	0.50	0.53	0.55	0.02	3.42	0.04	8.57

World and Selected Countries and Regions

Table 16 Copra, Palm Kernel, and Palm Oil Production

Country / Region	Production (Million metric tons)				Change in Production			
	2019/20	Prel.	2021/22 Proj.		From last month		From last year	
		2020/21	Jan	Feb	MMT	Percent	MMT	Percent
Oilseed, Copra								
Philippines	2.50	2.40	2.60	2.60	0.00	0.00	0.20	8.33
Indonesia	1.66	1.67	1.68	1.68	0.00	0.00	0.01	0.60
India	0.75	0.75	0.79	0.79	0.00	0.00	0.04	5.33
Vietnam	0.28	0.28	0.29	0.29	0.00	0.00	0.01	3.57
Papua New Guinea	0.08	0.08	0.08	0.08	0.00	0.00	0.00	0.00
Thailand	0.07	0.07	0.07	0.07	0.00	0.00	0.00	0.00
Sri Lanka	0.07	0.07	0.07	0.07	0.00	0.00	0.00	0.00
Mexico	0.04	0.04	0.05	0.05	0.01	25.00	0.01	25.00
Solomon Islands	0.03	0.03	0.03	0.03	0.00	0.00	0.00	0.00
Cote d'Ivoire	0.03	0.03	0.03	0.03	0.00	0.00	0.00	0.00
World	5.66	5.56	5.82	5.83	0.01	0.17	0.27	4.86
Oilseed, Palm Kernel								
Indonesia	11.25	11.46	11.70	11.70	0.00	0.00	0.24	2.09
Malaysia	4.75	4.34	4.60	4.60	0.00	0.00	0.26	5.99
Nigeria	0.88	0.82	0.90	0.90	0.00	0.00	0.08	9.76
Thailand	0.75	0.79	0.85	0.85	0.00	0.00	0.06	7.59
Colombia	0.30	0.28	0.30	0.29	-0.01	-3.33	0.01	3.57
Guatemala	0.17	0.17	0.18	0.18	0.00	0.00	0.01	5.88
Papua New Guinea	0.16	0.16	0.16	0.16	0.00	0.00	0.00	0.00
Cameroon	0.15	0.15	0.15	0.15	0.00	0.00	0.00	0.00
Brazil	0.14	0.14	0.15	0.15	0.00	0.00	0.00	0.00
Honduras	0.18	0.13	0.16	0.16	0.00	0.00	0.03	23.08
World	19.29	19.02	19.74	19.73	-0.01	-0.05	0.71	3.73
Oil, Palm								
Indonesia	42.50	43.50	44.50	44.50	0.00	0.00	1.00	2.30
Malaysia	19.26	17.85	18.70	18.70	0.00	0.00	0.85	4.76
Thailand	2.65	2.97	3.12	3.12	0.00	0.00	0.15	5.05
Colombia	1.50	1.52	1.65	1.62	-0.03	-1.82	0.10	6.58
Nigeria	1.14	1.28	1.40	1.40	0.00	0.00	0.13	10.24
Guatemala	0.86	0.87	0.88	0.88	0.00	0.00	0.02	2.33
Papua New Guinea	0.56	0.56	0.57	0.57	0.00	0.00	0.00	0.00
Brazil	0.54	0.55	0.55	0.55	0.00	0.00	0.00	0.00
Cote d'Ivoire	0.52	0.52	0.52	0.52	0.00	0.00	0.00	0.00
Ecuador	0.46	0.49	0.56	0.56	0.00	0.00	0.07	14.29
World	72.94	73.00	75.54	75.50	-0.04	-0.05	2.50	3.42

World and Selected Countries and Regions

Table 17 Cotton Area, Yield, and Production

Country / Region	Area (Million hectares)				Yield (Kilograms per hectare)				Production (Million 480 lb. bales)				Change in Production			
	Prel.		2021/22 Proj.		Prel.		2021/22 Proj.		Prel.		2021/22 Proj.		From last month		From last year	
	2019/20	2020/21	Jan	Feb	2019/20	2020/21	Jan	Feb	2019/20	2020/21	Jan	Feb	MBales	Percent	MBales	Percent
World	34.48	31.11	32.70	32.28	764	782	805	810	121.01	111.79	120.96	120.15	-0.80	-0.66	8.37	7.48
United States	4.65	3.35	4.03	4.03	932	950	951	951	19.91	14.61	17.62	17.62	0.00	0.00	3.02	20.65
Total Foreign	29.82	27.76	28.66	28.25	738	762	785	790	101.10	97.18	103.33	102.53	-0.80	-0.78	5.35	5.51
South Asia																
India	13.40	13.00	12.40	12.40	463	462	483	474	28.50	27.60	27.50	27.00	-0.50	-1.82	-0.60	-2.17
Pakistan	2.45	2.20	2.00	2.00	551	445	631	631	6.20	4.50	5.80	5.80	0.00	0.00	1.30	28.89
China	3.45	3.25	3.10	3.10	1,720	1,976	1,896	1,896	27.25	29.50	27.00	27.00	0.00	0.00	-2.50	-8.47
South America																
Brazil	1.67	1.37	1.60	1.60	1,802	1,720	1,796	1,796	13.78	10.82	13.20	13.20	0.00	0.00	2.38	22.00
Argentina	0.42	0.45	0.45	0.45	682	668	702	702	1.30	1.38	1.45	1.45	0.00	0.00	0.07	5.07
Paraguay	0.01	0.01	0.01	0.01	416	416	416	416	0.02	0.02	0.02	0.02	0.00	0.00	0.00	0.00
Africa																
Burkina Faso	0.58	0.56	0.60	0.60	330	358	348	357	0.88	0.92	0.95	0.98	0.03	2.63	0.06	6.56
Mali	0.74	0.17	0.72	0.72	400	376	423	416	1.35	0.29	1.40	1.38	-0.03	-1.79	1.09	382.46
Cote d'Ivoire	0.41	0.45	0.48	0.48	528	494	504	504	0.99	1.01	1.10	1.10	0.00	0.00	0.09	8.91
Benin	0.67	0.62	0.64	0.64	467	513	510	510	1.43	1.45	1.50	1.50	0.00	0.00	0.05	3.45
Egypt	0.10	0.07	0.10	0.10	664	720	718	718	0.31	0.22	0.33	0.33	0.00	0.00	0.12	53.49
Cameroon	0.25	0.23	0.23	0.23	562	658	663	663	0.65	0.68	0.70	0.70	0.00	0.00	0.02	2.94
Tanzania	0.35	0.17	0.60	0.24	375	284	218	231	0.60	0.22	0.60	0.26	-0.35	-57.50	0.04	18.60
Nigeria	0.15	0.27	0.27	0.27	290	282	282	282	0.20	0.35	0.35	0.35	0.00	0.00	0.00	0.00
Zimbabwe	0.18	0.24	0.21	0.21	230	318	207	207	0.19	0.35	0.20	0.20	0.00	0.00	-0.15	-42.86
Ethiopia	0.08	0.08	0.08	0.08	680	637	637	637	0.25	0.24	0.24	0.24	0.00	0.00	0.00	0.00
Former Soviet Union - 12																
Uzbekistan	1.01	0.98	0.98	0.98	754	782	755	755	3.50	3.50	3.40	3.40	0.00	0.00	-0.10	-2.86
Turkmenistan	0.55	0.55	0.55	0.55	368	368	356	356	0.92	0.92	0.90	0.90	0.00	0.00	-0.02	-2.17
Tajikistan	0.18	0.16	0.17	0.17	708	619	640	640	0.59	0.46	0.50	0.50	0.00	0.00	0.05	9.89
Kazakhstan	0.13	0.11	0.12	0.12	627	534	502	502	0.36	0.27	0.27	0.27	0.00	0.00	-0.01	-1.85
Middle East																
Turkey	0.57	0.35	0.45	0.45	1,318	1,804	1,839	1,839	3.45	2.90	3.80	3.80	0.00	0.00	0.90	31.03
Syria	0.03	0.03	0.03	0.03	1,219	1,219	1,132	1,132	0.14	0.14	0.13	0.13	0.00	0.00	-0.01	-7.14
Iran	0.09	0.10	0.08	0.10	789	871	708	871	0.33	0.40	0.26	0.40	0.14	53.85	0.00	1.01
Australia	0.06	0.28	0.63	0.60	2,268	2,217	1,916	1,996	0.63	2.80	5.50	5.50	0.00	0.00	2.70	96.43
Mexico	0.23	0.15	0.15	0.15	1,519	1,532	1,524	1,524	1.57	1.02	1.05	1.05	0.00	0.00	0.03	2.94
Burma	0.25	0.24	0.25	0.25	641	635	644	644	0.72	0.70	0.73	0.73	0.00	0.00	0.03	3.57
Others	1.87	1.73	1.79	1.74	585	572	543	547	5.03	4.55	4.46	4.36	-0.10	-2.20	-0.18	-4.05

World and Selected Countries and Regions

TABLE 18

The table below presents a record of the February projection and the final Estimate. Using world wheat production as an example, the "root mean square error" means that chances are 2 out of 3 that the current forecast will not be above or below the final estimate by more than 0.6 percent. Chances are 9 out of 10 (90% confidence level) that the difference will not exceed 0.9 percent. The average difference between the February projection and the final estimate is 2.5 million tons, ranging from 0 million to 7.3 million tons. The February projection has been below the estimate 30 times and above 10 times.

RELIABILITY OF PRODUCTION PROJECTIONS 1/

COMMODITY AND REGION	Root mean square error	90 percent confidence interval	Difference between forecast and final estimate				
			Average	Smallest	Largest	Years	
						Below final	Above final
	Percent		---Million metric tons---				
WHEAT							
World	0.6	0.9	2.5	0.0	7.3	30	10
U.S.	0.2	0.3	0.1	0.0	0.3	18	11
Foreign	0.6	1.1	2.5	0.0	7.3	30	10
COARSE GRAINS 2/							
World	1.3	2.2	11.4	0.0	36.3	32	8
U.S.	0.2	0.3	0.2	0.0	1.8	18	9
Foreign	1.9	3.1	11.4	0.0	36.3	30	9
RICE (Milled)							
World	1.5	2.6	4.3	0.1	14.0	31	9
U.S.	1.4	2.4	0.0	0.0	0.3	12	6
Foreign	1.6	2.6	4.3	0.1	14.0	31	9
SOYBEANS							
World	2.7	4.6	4.3	0.4	15.3	23	17
U.S.	1.4	2.3	0.7	0.0	3.2	17	17
Foreign	4.5	7.6	4.3	0.3	14.9	25	15
COTTON			---Million 480-lb. bales---				
World	2.3	3.9	1.7	0.0	5.4	29	11
U.S.	1.1	1.8	0.1	0.0	0.3	14	25
Foreign	2.8	4.7	1.7	0.1	5.7	29	11
UNITED STATES			-----Million bushels-----				
<i>CORN</i>	0.2	0.3	6	0	72	2	4
<i>SORGHUM</i>	0.1	0.2	0	0	4	0	2
<i>BARLEY</i>	0.9	1.6	1	0	11	19	4
<i>OATS</i>	0.4	0.7	0	0	2	5	4

1/ Marketing years 1981/82 through 2020/21 for grains, soybeans, and cotton. Final for grains, soybeans, and cotton is defined as the first November estimate following the marketing year for 1981/82 through 2019/20, and for 2020/21 the last month's estimate.

2/ Includes corn, sorghum, barley, oats, rye, millet, and mixed grain

February 2022

Global Market Analysis, FAS, USDA